

SERCA1 Polyclonal Antibody

Catalog No: #41428

Package Size: #41428-1 50ul #41428-2 100ul

Orders: order@signalwayantibody.comSupport: tech@signalwayantibody.com

Description

Product Name	SERCA1 Polyclonal Antibody
Host Species	Rabbit
Clonality	Polyclonal
Purification	The antibody was affinity-purified from rabbit antiserum by affinity-chromatography using epitope-specific immunogen.
Applications	WB IHC ELISA
Species Reactivity	Hu Ms Rt
Specificity	SERCA1 Polyclonal Antibody detects endogenous levels of SERCA1 protein.
Immunogen Type	peptide
Immunogen Description	Synthesized peptide derived from the Internal region of human SERCA1.
Target Name	SERCA1
Other Names	ATP2A1; Sarcoplasmic/endoplasmic reticulum calcium ATPase 1; SERCA1; SR Ca(2+)-ATPase 1; Calcium pump 1; Calcium-transporting ATPase sarcoplasmic reticulum type; fast twitch skeletal muscle isoform; Endoplasmic reticulum class 1/2 Ca(2+) AT
Accession No.	Swiss-Prot: O14983NCBI Gene ID: 487
Uniprot	O14983
GeneID	487;
SDS-PAGE MW	100kd
Concentration	1mg/ml
Formulation	Liquid in PBS containing 50% glycerol, 0.5% BSA and 0.02% sodium azide.
Storage	Store at -20°C/1 year

Application Details

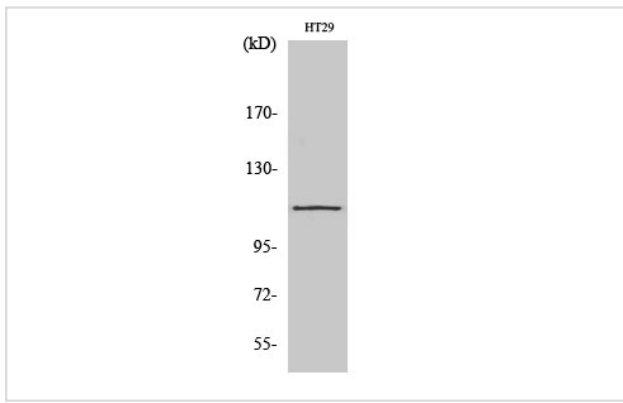
Western Blot: 1/500 - 1/2000.

Immunohistochemistry: 1/100 - 1/300.

ELISA: 1/10000.

Not yet tested in other applications.

Images



Western Blot analysis of NIH-3T3 cells using SERCA1 Polyclonal Antibody

Note: This product is for in vitro research use only