

Monoamine oxidase A Antibody

Catalog No: #48211

Package Size: #48211-1 50ul #48211-2 100ul

Orders: order@signalwayantibody.com

Support: tech@signalwayantibody.com

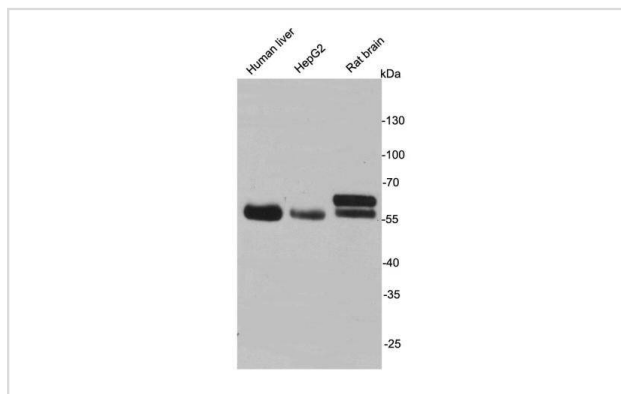
Description

Product Name	Monoamine oxidase A Antibody
Host Species	Rabbit
Clonality	Polyclonal
Purification	Peptide affinity purified
Applications	WB, IHC
Species Reactivity	Hu, Ms, Rt
Immunogen Description	recombinant protein
Other Names	Amine oxidase [flavin containing] A antibody Amine oxidase [flavin-containing] A antibody AOFA antibody AOFA_HUMAN antibody EC 1.4.3.4 antibody MAO A antibody MAO-A antibody maoA antibody Monoamine oxidase A antibody Monoamine oxidase type A antibody
Accession No.	Swiss-Prot#:P21397
Uniprot	P21397
GeneID	4128;
Calculated MW	60 kDa
Formulation	1*TBS (pH7.4), 1%BSA, 40%Glycerol. Preservative: 0.05% Sodium Azide.
Storage	Store at -20°C

Application Details

WB: 1:1000-1:2,000

Images



Western blot analysis on cell and tissue lysates using anti-MAOA rabbit polyclonal antibodies.

Background

Monoamine oxidase A is an enzyme that degrades amine neurotransmitters, such as dopamine, norepinephrine, and serotonin. The protein localizes to the outer mitochondrial membrane. Its encoding gene is adjacent to a related gene (MAOB) on the opposite strand of the X chromosome. MAO-A levels in the brain as measured using positron emission tomography are elevated by an average of 34% in patients with major depressive disorder.

Genetic association studies examining the relationship between high-activity MAOA variants and depression have produced mixed results, with some studies linking the high-activity variants to major depression in females, depressed suicide in males, major depression and sleep disturbance in males and major depressive disorder in both males and females.

References

Note: This product is for in vitro research use only