

## SGK1 Polyclonal Antibody

Catalog No: #41430

Package Size: #41430-1 50ul #41430-2 100ul

Orders: [order@signalwayantibody.com](mailto:order@signalwayantibody.com)Support: [tech@signalwayantibody.com](mailto:tech@signalwayantibody.com)

## Description

Product Name	SGK1 Polyclonal Antibody
Host Species	Rabbit
Clonality	Polyclonal
Purification	The antibody was affinity-purified from rabbit antiserum by affinity-chromatography using epitope-specific immunogen.
Applications	WB IHC IF ELISA
Species Reactivity	Hu Ms Rt
Specificity	SGK1 Polyclonal Antibody detects endogenous levels of SGK1 protein.
Immunogen Type	peptide
Immunogen Description	Synthesized peptide derived from human SGK1 around the non-phosphorylation site of S78.
Target Name	SGK1
Other Names	SGK1; SGK; Serine/threonine-protein kinase Sgk1; Serum/glucocorticoid-regulated kinase 1
Accession No.	Swiss-Prot: O00141NCBI Gene ID: 6446
Uniprot	O00141
GeneID	6446;
SDS-PAGE MW	54kd
Concentration	1mg/ml
Formulation	Liquid in PBS containing 50% glycerol, 0.5% BSA and 0.02% sodium azide.
Storage	Store at -20°C/1 year

## Application Details

Western Blot: 1/500 - 1/2000.

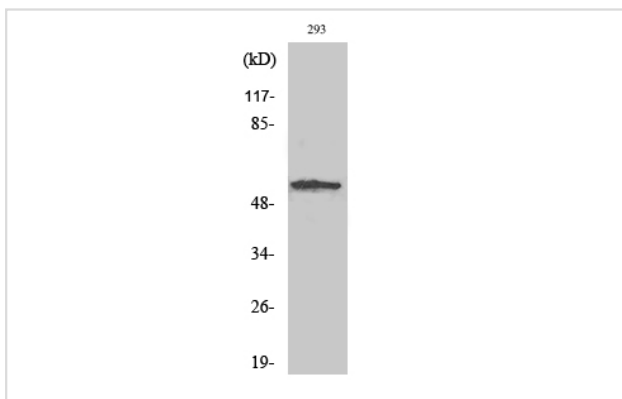
Immunohistochemistry: 1/100 - 1/300.

Immunofluorescence: 1/200 - 1/1000.

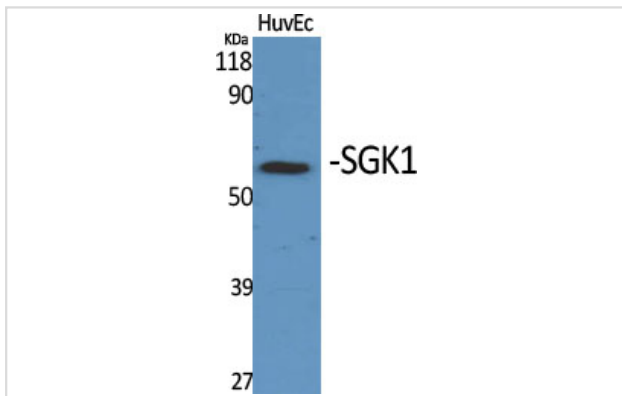
ELISA: 1/5000.

Not yet tested in other applications.

## Images



Western Blot analysis of 293 cells using SGK1 Polyclonal Antibody



Western Blot analysis of HuvEc cells using SGK1 Polyclonal Antibody

---

Note: This product is for in vitro research use only