

SH-PTP2 Polyclonal Antibody

Catalog No: #41431

Package Size: #41431-1 50ul #41431-2 100ul

Orders: order@signalwayantibody.comSupport: tech@signalwayantibody.com

Description

Product Name	SH-PTP2 Polyclonal Antibody
Host Species	Rabbit
Clonality	Polyclonal
Purification	The antibody was affinity-purified from rabbit antiserum by affinity-chromatography using epitope-specific immunogen.
Applications	WB IHC ELISA
Species Reactivity	Hu Ms Rt
Specificity	SH-PTP2 Polyclonal Antibody detects endogenous levels of SH-PTP2 protein.
Immunogen Type	peptide
Immunogen Description	Synthesized peptide derived from human SH-PTP2 around the non-phosphorylation site of Y580.
Target Name	SH-PTP2
Other Names	PTPN11; PTP2C; SHPTP2; Tyrosine-protein phosphatase non-receptor type 11; Protein-tyrosine phosphatase 1D; PTP-1D; Protein-tyrosine phosphatase 2C; PTP-2C; SH-PTP2; SHP-2; Shp2; SH-PTP3
Accession No.	Swiss-Prot: Q06124NCBI Gene ID: 5781
Uniprot	Q06124
GeneID	5781;
SDS-PAGE MW	72kd
Concentration	1mg/ml
Formulation	Liquid in PBS containing 50% glycerol, 0.5% BSA and 0.02% sodium azide.
Storage	Store at -20°C/1 year

Application Details

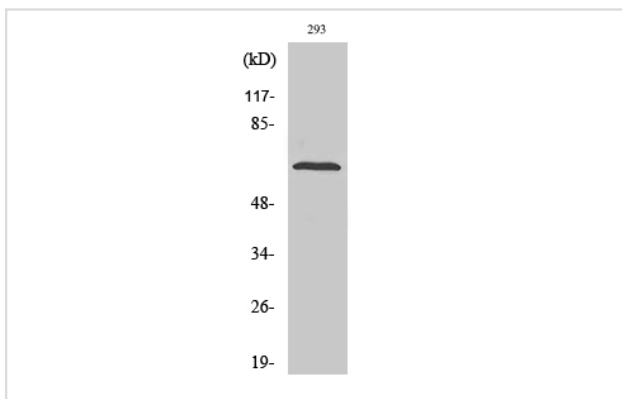
Western Blot: 1/500 - 1/2000.

Immunohistochemistry: 1/100 - 1/300.

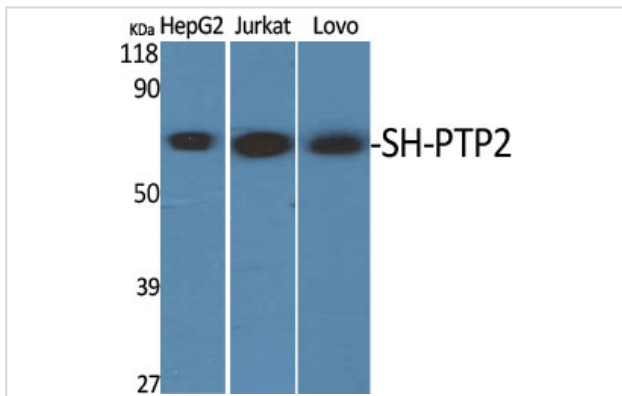
ELISA: 1/20000.

Not yet tested in other applications.

Images



Western Blot analysis of 293 cells using SH-PTP2 Polyclonal Antibody



Western Blot analysis of HepG2 Jurkat LOVO cells using SH-PTP2 Polyclonal Antibody

Note: This product is for in vitro research use only