

## UBE1C Antibody

Catalog No: #48256

Package Size: #48256-1 50ul #48256-2 100ul

Orders: order@signalwayantibody.com

Support: tech@signalwayantibody.com

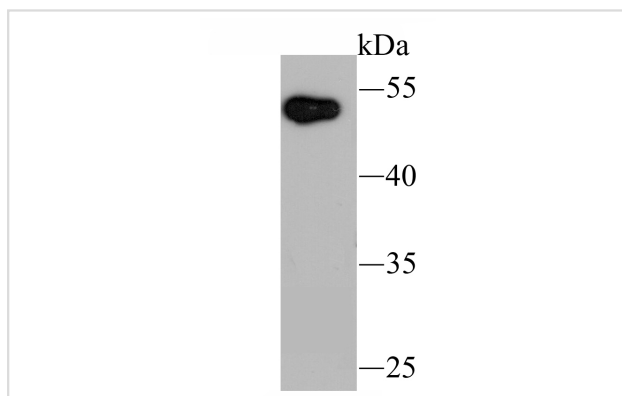
## Description

Product Name	UBE1C Antibody
Host Species	Rabbit
Clonality	Polyclonal
Purification	ProA affinity purified
Applications	WB, ICC, IHC, FC
Species Reactivity	Hu, Ms, Rt
Immunogen Description	Recombinant protein
Other Names	DKFZp566J164 antibody EC 6.3.2. antibody hUba3 antibody MGC22384 antibody NEDD8 activating enzyme E1 catalytic subunit antibody NEDD8 activating enzyme E1C antibody Nedd8 activating enzyme hUba3 antibody NEDD8-activating enzyme E1 catalytic subunit antibody NEDD8-activating enzyme E1C antibody uba3 antibody UBA3 ubiquitin activating enzyme E1 homolog antibody UBA3_HUMAN antibody UBE1C antibody Ubiquitin activating enzyme 3 antibody Ubiquitin activating enzyme E1C antibody Ubiquitin-activating enzyme 3 antibody Ubiquitin-activating enzyme E1C antibody Ubiquitin-like modifier-activating enzyme 3 antibody
Accession No.	Swiss-Prot#:Q8TBC4
Uniprot	Q8TBC4
GeneID	9039;
Calculated MW	52 kDa
Formulation	1*TBS (pH7.4), 0.5%BSA, 50%Glycerol. Preservative: 0.05% Sodium Azide.
Storage	Store at -20°C

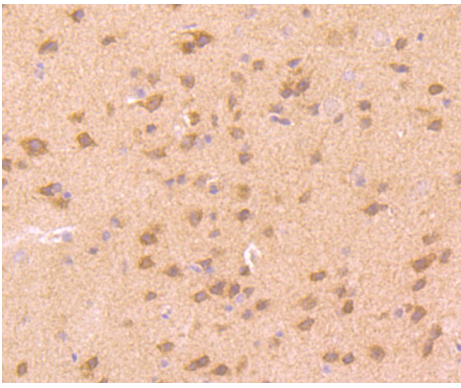
## Application Details

WB: 1:500 IHC: 1:50-1:200 ICC: 1:50-1:200FC: 1:50-1:100

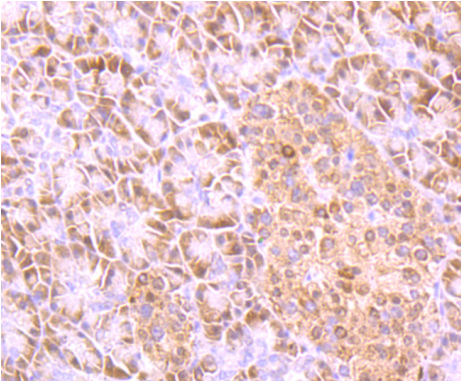
## Images



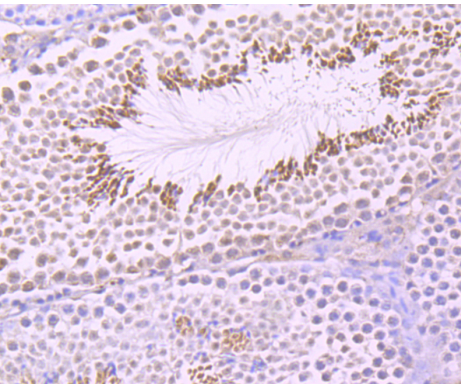
Western blot analysis of UBE1C on human liver tissue lysate using anti-UBE1C antibody at 1/200 dilution.



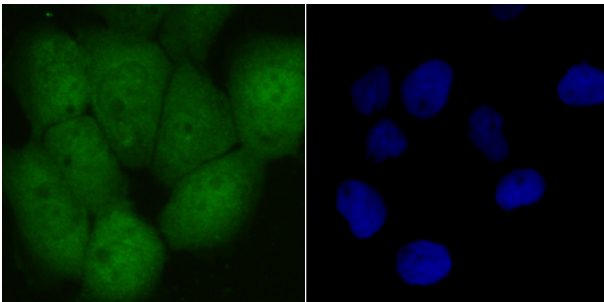
Immunohistochemical analysis of paraffin-embedded rat brain tissue using anti-UBE1C antibody. Counter stained with hematoxylin.



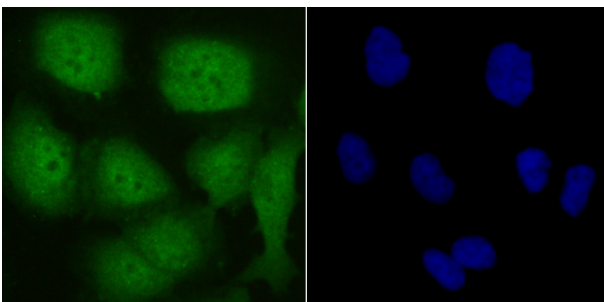
Immunohistochemical analysis of paraffin-embedded human pancreas tissue using anti-UBE1C antibody. Counter stained with hematoxylin.



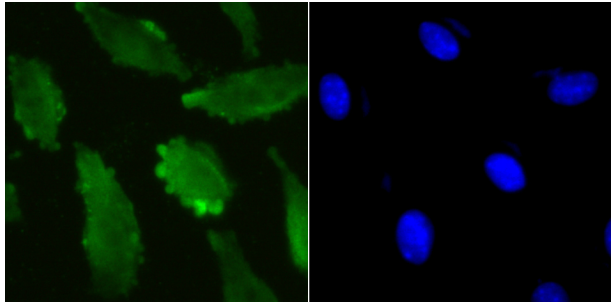
Immunohistochemical analysis of paraffin-embedded mouse testis tissue using anti-UBE1C antibody. Counter stained with hematoxylin.



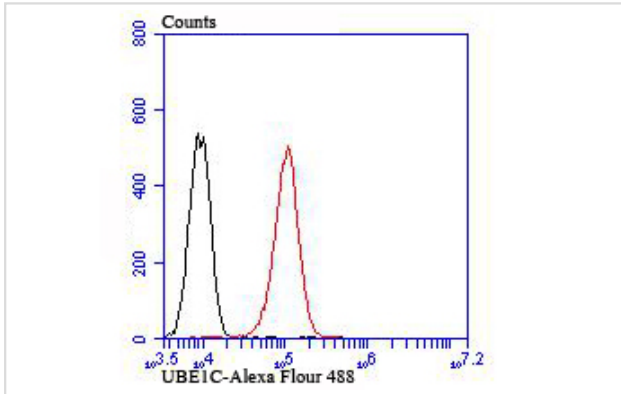
ICC staining UBE1C in A431 cells (green). The nuclear counter stain is DAPI (blue). Cells were fixed in paraformaldehyde, permeabilised with 0.25% Triton X100/PBS.



ICC staining UBE1C in HUVEC cells (green). The nuclear counter stain is DAPI (blue). Cells were fixed in paraformaldehyde, permeabilised with 0.25% Triton X100/PBS.



ICC staining UBE1C in SH-SY5Y cells (green). The nuclear counter stain is DAPI (blue). Cells were fixed in paraformaldehyde, permeabilised with 0.25% Triton X100/PBS.



Flow cytometric analysis of HUVEC cells with UBE1C antibody at 1/100 dilution (red) compared with an unlabelled control (cells without incubation with primary antibody; green).

## Background

Ubiquitin is an abundant, highly conserved protein found in all eukaryotic cells either free or covalently attached to cellular proteins. The primary function of ubiquitin in mammalian systems is to clear abnormal, foreign and improperly folded proteins by targeting them for proteasome degradation. UBA3 (ubiquitin-like modifier activating enzyme 3), also known as NEDD8-activating enzyme E1 catalytic subunit or UBE1C (ubiquitin-activating enzyme E1C), is a 463 amino acid protein belonging to the ubiquitin-activating E1 family and UBA3 subfamily. Ubiquitously expressed, UBA3 acts as an activator to NEDD8, a ubiquitin-like protein, thus regulating cell division, signaling and embryogenesis. UBA3 exists as two isoforms due to alternative splicing events.

## References

Note: This product is for in vitro research use only