

FBXL2 Antibody

Catalog No: #48257

Package Size: #48257-1 50ul #48257-2 100ul

Orders: order@signalwayantibody.com

Support: tech@signalwayantibody.com

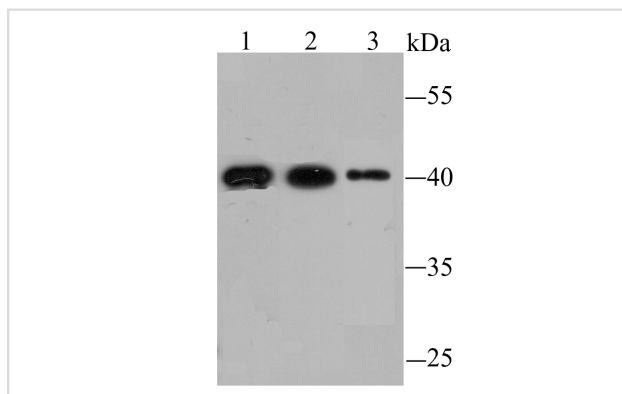
Description

Product Name	FBXL2 Antibody
Host Species	Rabbit
Clonality	Polyclonal
Purification	ProA affinity purified
Applications	WB, ICC, IHC
Species Reactivity	Hu, Ms, Rt
Immunogen Description	Recombinant protein
Other Names	DKFZP564P0622 antibody F box and leucine rich repeat protein 2 antibody F box protein containing leucine rich repeats antibody F box protein FBL2/FBL3 antibody F box/LRR repeat protein 2 antibody F-box and leucine-rich repeat protein 2 antibody F-box protein FBL2/FBL3 antibody F-box/LRR-repeat protein 2 antibody FBL 2 antibody FBL 3 antibody FBL2 antibody FBL3 antibody FBXL 2 antibody FBXL2 antibody FBXL2_HUMAN antibody
Accession No.	Swiss-Prot#:Q9UKC9
Uniprot	Q9UKC9
GeneID	25827;
Calculated MW	49 kDa
Formulation	1*TBS (pH7.4), 0.5%BSA, 50%Glycerol. Preservative: 0.05% Sodium Azide.
Storage	Store at -20°C

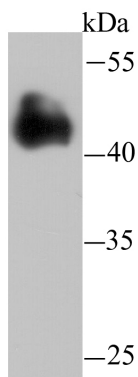
Application Details

WB: 1:1,000-1:10,000 IHC: 1:50-1:200 ICC: 1:50-1:200

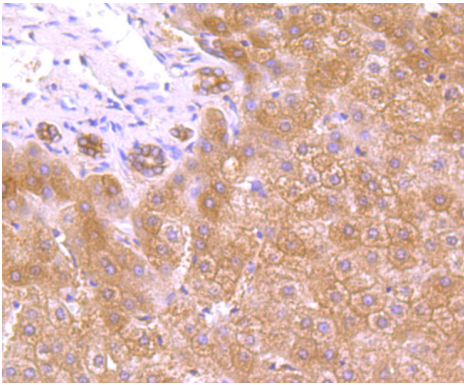
Images



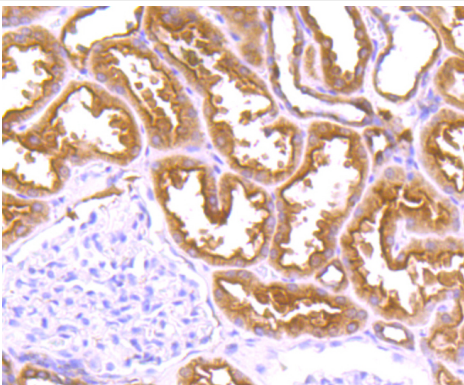
Western blot analysis of FBXL2 on different lysates using anti-FBXL2 antibody at 1/1,000 dilution.
 Positive control Ω $\frac{1}{2}$ Ω $\frac{1}{2}$
 Lane1: Mouse liver tissue Lane2: Mouse heart tissue Lane3: SiHa



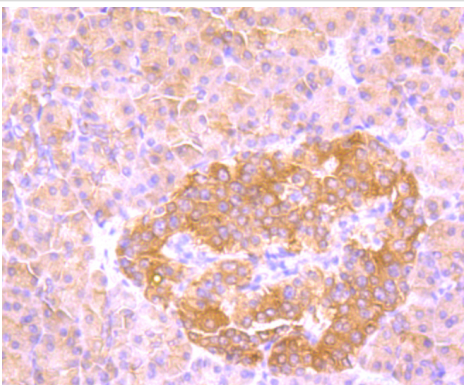
Western blot analysis of FBXL2 on rat liver tissue lysate using anti-FBXL2 antibody at 1/10,000 dilution.



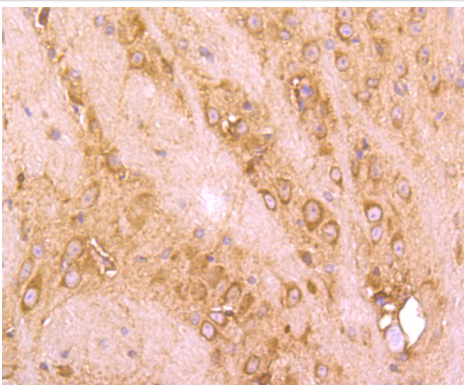
Immunohistochemical analysis of paraffin-embedded human liver tissue using anti-FBXL2 antibody. Counter stained with hematoxylin.



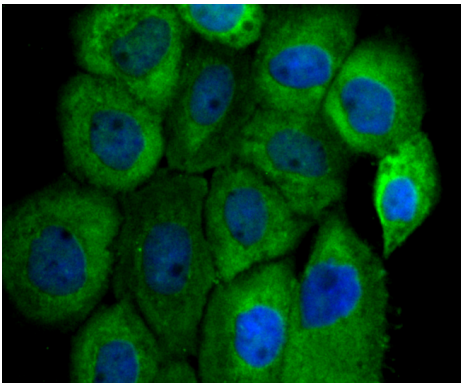
Immunohistochemical analysis of paraffin-embedded human kidney tissue using anti-FBXL2 antibody. Counter stained with hematoxylin.



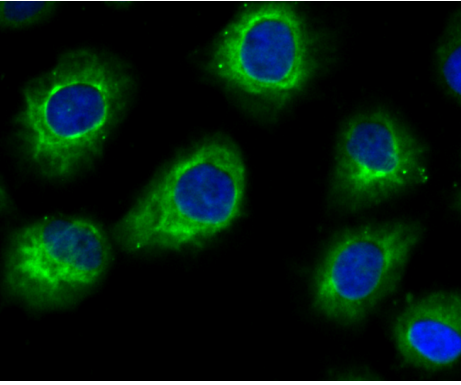
Immunohistochemical analysis of paraffin-embedded human pancreas tissue using anti-FBXL2 antibody. Counter stained with hematoxylin.



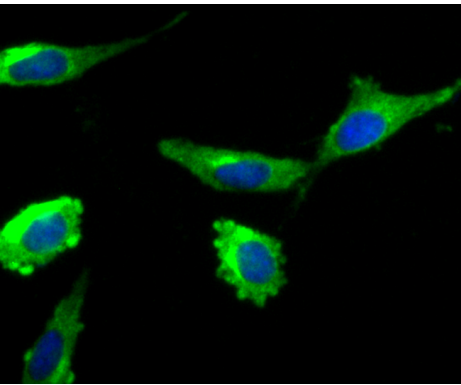
Immunohistochemical analysis of paraffin-embedded mouse brain tissue using anti-FBXL2 antibody. Counter stained with hematoxylin.



ICC staining FBXL2 in A431 cells (green). The nuclear counter stain is DAPI (blue). Cells were fixed in paraformaldehyde, permeabilised with 0.25% Triton X100/PBS.



ICC staining FBXL2 in HUVEC cells (green). The nuclear counter stain is DAPI (blue). Cells were fixed in paraformaldehyde, permeabilised with 0.25% Triton X100/PBS.



ICC staining FBXL2 in SH-SY5Y cells (green). The nuclear counter stain is DAPI (blue). Cells were fixed in paraformaldehyde, permeabilised with 0.25% Triton X100/PBS.

Background

Calcium-activated substrate recognition component of a SCF (SKP1-cullin-F-box protein) E3 ubiquitin-protein ligase complex which mediates the ubiquitination and subsequent proteasomal degradation of target proteins. Unlike many F-box proteins, FBXL2 doesn't seem to target phosphodegron within its substrates but rather calmodulin-binding motifs. Targets PCYT1A for its monoubiquitination and degradation, this is antagonized by calmodulin (By similarity). Targets the cyclins CCND2 and CCND3 for polyubiquitination and degradation, leading to cell-cycle arrest in G(0), also antagonized by calmodulin. Binds to hepatitis C virus non-structural protein 5A (NS5A) in a reaction crucial for hepatitis C virus RNA replication.

References

Note: This product is for in vitro research use only