

SIP1 Polyclonal Antibody

Catalog No: #41435

Package Size: #41435-1 50ul #41435-2 100ul

Orders: order@signalwayantibody.comSupport: tech@signalwayantibody.com

Description

Product Name	SIP1 Polyclonal Antibody
Host Species	Rabbit
Clonality	Polyclonal
Purification	The antibody was affinity-purified from rabbit antiserum by affinity-chromatography using epitope-specific immunogen.
Applications	WB IHC ELISA
Species Reactivity	Hu Ms Rt
Specificity	SIP1 Polyclonal Antibody detects endogenous levels of SIP1 protein.
Immunogen Type	peptide
Immunogen Description	Synthesized peptide derived from the N-terminal region of human SIP1.
Target Name	SIP1
Other Names	ZEB2; KIAA0569; SIP1; ZFH1B; ZFX1B; HRIHFB2411; Zinc finger E-box-binding homeobox 2; Smad-interacting protein 1; SMADIP1; Zinc finger homeobox protein 1b
Accession No.	Swiss-Prot: O60315NCBI Gene ID: 9839
Uniprot	O60315
GeneID	9839;
SDS-PAGE MW	157kd
Concentration	1mg/ml
Formulation	Liquid in PBS containing 50% glycerol, 0.5% BSA and 0.02% sodium azide.
Storage	Store at -20°C/1 year

Application Details

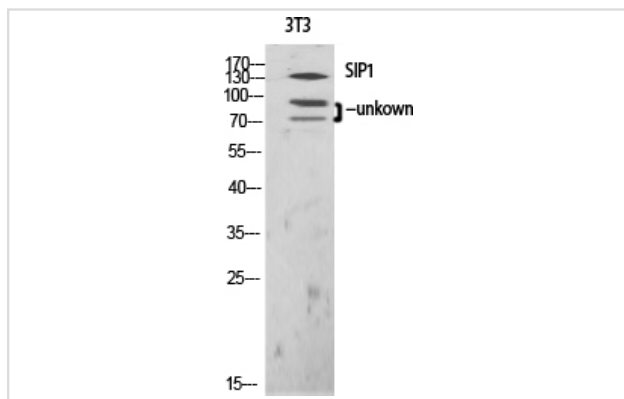
Western Blot: 1/500 - 1/2000.

Immunohistochemistry: 1/100 - 1/300.

ELISA: 1/10000.

Not yet tested in other applications.

Images



Western Blot analysis of NIH-3T3 cells using SIP1 Polyclonal Antibody

Note: This product is for in vitro research use only