

ALCAM/CD166 Antibody

Catalog No: #48272

Package Size: #48272-1 50ul #48272-2 100ul

Orders: order@signalwayantibody.com

Support: tech@signalwayantibody.com

Description

Product Name	ALCAM/CD166 Antibody
Host Species	Mouse
Clone No.	7C2
Purification	ProA affinity purified
Applications	WB, IP, IF, IHC(P)
Species Reactivity	Hu, Ms, Rt
Immunogen Description	peptide
Other Names	Activated leukocyte cell adhesion molecule antibody ALCAM antibody ALCAM protein antibody CD 166 antibody CD166 antibody CD166 antigen antibody CD166_HUMAN antibody FLJ3851 antibody FLJ38514 antibody MEMD antibody MGC71733 antibody
Accession No.	Swiss-Prot#:Q13740
Uniprot	Q13740
GeneID	214;
Calculated MW	100-105 kDa
Formulation	1*TBS (pH7.4), 1%BSA, 40%Glycerol. Preservative: 0.05% Sodium Azide.
Storage	Store at 4°C

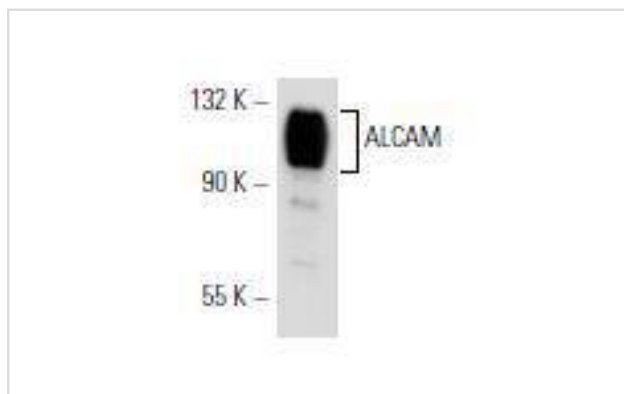
Application Details

WB: 1:100-1:1,000

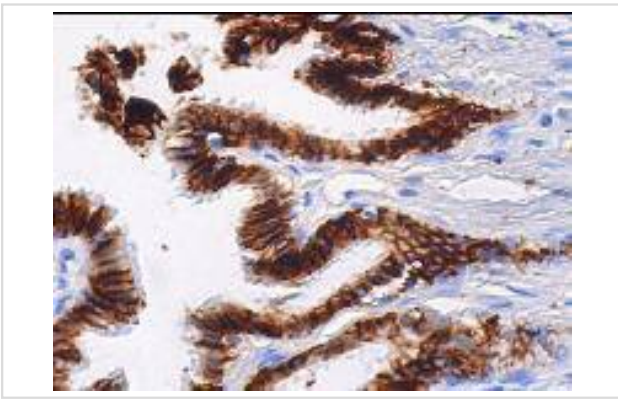
IHC: 1:50-500

IP: 1-2 µg per 100-500 µg of total protein(1 ml of cell lysate)

Images



Western blot analysis of ALCAM expression in SK-N-SH whole cell lysate.



Immunoperoxidase staining of formalin fixed, paraffin-embedded human bronchus tissue showing membrane staining of respiratory epithelial cells.

Background

Activated leukocyte cell adhesion molecule (ALCAM), expressed on activated leukocytes, T cells, B cells and monocytes, is a member of the immunoglobulin superfamily (IgSF) and identified as a CD6 ligand. CD6 is a type I membrane protein in the scavenger receptor cysteine rich protein superfamily that acts in T cell adhesion and costimulation. ALCAM mediates thymocyte-thymic epithelial cell adhesion via homophilic (ALCAM-ALCAM) and heterophilic (ALCAMCD6) interactions involving a previously undescribed protein-protein interaction between a member of the scavenger receptor cysteine rich protein superfamily and the immunoglobulin superfamily.

Note: This product is for in vitro research use only