

BrdU (Bu20a) Antibody

Catalog No: #48275

Package Size: #48275-1 50ul #48275-2 100ul

Orders: order@signalwayantibody.com

Support: tech@signalwayantibody.com

Description

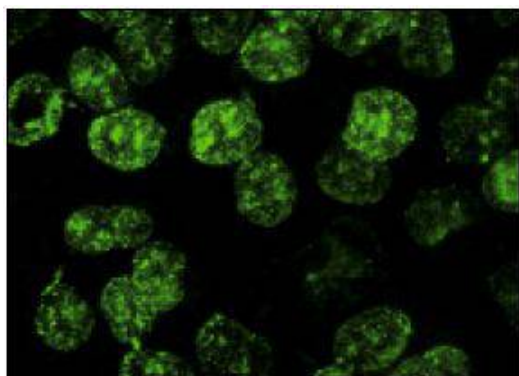
Product Name	BrdU (Bu20a) Antibody
Host Species	Mouse
Clone No.	1G1
Purification	ProA affinity purified
Applications	IF, IHC(P), FCM
Species Reactivity	Bromodeoxyuridine
Immunogen Description	peptide
Other Names	Bromodeoxyuridine antibody BUdr antibody
Accession No.	Swiss-Prot#:
Formulation	1*TBS (pH7.4), 1%BSA, 40%Glycerol. Preservative: 0.05% Sodium Azide.
Storage	Store at 4°C

Application Details

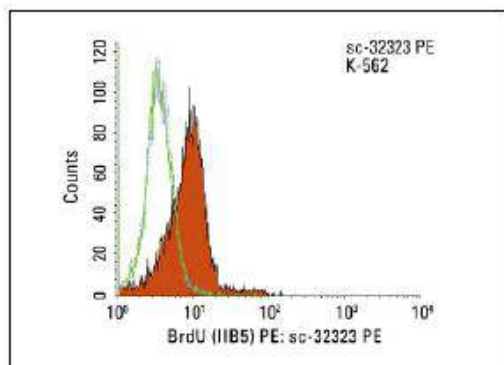
IHC: 1:50-500

FC: 1 μg per 1 x 10⁶ cells

Images



Immunofluorescence staining of methanol-fixed BrdU-labeled HeLa cells showing nuclear localization.



Intracellular FCM analysis of fixed and permeabilized untreated (dotted blue histogram) and BrdU treated (solid orange histogram) K-562 cells. Green line histogram represents the isotype control, normal mouse IgG1.

Background

The halogenated pyrimidine thymidine analog bromodeoxyuridine (BrdU) is incorporated into newly synthesized DNA strands of S-phase cells and is useful for estimating the fraction of cells in S-phase. Additionally, the analysis of the uptake of BrdU is a reliable method to quantitate the degree of DNA-synthesis. BrdU is also useful for studying sister chromatid exchange and to isolate nascent DNA. UV-induced excision-repair synthesis is one method for incorporating BrdU into cellular DNA. Anti-BrdU antibodies bind to the exposed BrdU in single-stranded DNA after a hydrochloric acid denaturation step or nuclease digestion. Protease antigen recovery is necessary for most tissues or cells fixed with crosslinking agents such as formalin but may decrease the specificity of BrdUrd immunodetection. The monoclonal antibody Bu20a against BrdU stains BrdU incorporated into the nuclei of a wide range of proliferating cell types including human tumors growing in nude mice and tonsil lymphoid.

Note: This product is for in vitro research use only