

## GFP (FL) Antibody

Catalog No: #48297

Package Size: #48297-1 50ul #48297-2 100ul

Orders: [order@signalwayantibody.com](mailto:order@signalwayantibody.com)Support: [tech@signalwayantibody.com](mailto:tech@signalwayantibody.com)

## Description

Product Name	GFP (FL) Antibody
Purification	Affinity-chromatography
Applications	WB;IHC;ICC/IF
Species Reactivity	Recombinant protein
Immunogen Description	Recombinant Protein of GFP
Other Names	GFP antibody Green fluorescent protein antibody yfp antibody
Accession No.	Swiss-Prot#:
Uniprot	P42212
Calculated MW	27 kDa
Formulation	Rabbit IgG in 10mM phosphate buffered saline , pH 7.4, 150mM sodium chloride, 0.05% BSA, 0.02% sodium azide and 50% glycerol.
Storage	Store at +4°C for short term. Store at -20°C for long term. Avoid freeze/thaw cycle.

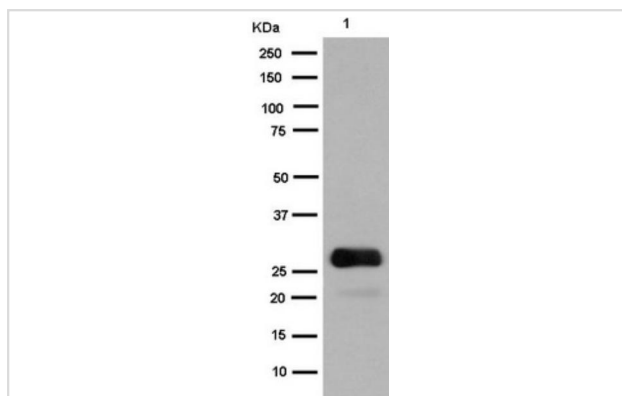
## Application Details

WB 1:1000-1:10000

IHC 1:100-1:500

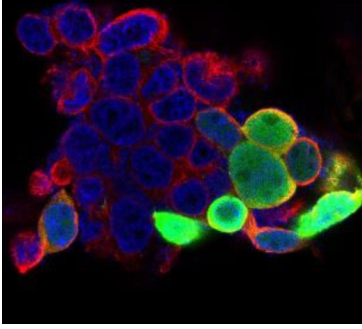
ICC/IF 1:100-1:500

## Images

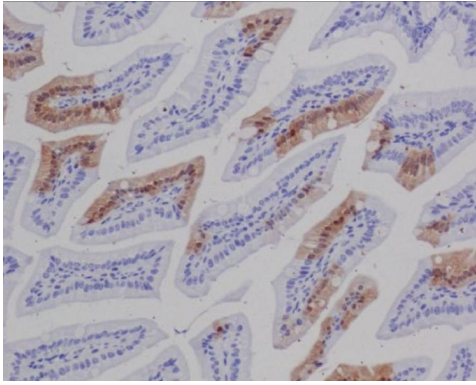


Western blot analysis of GFP expression in 293 cell lysate transfected with GFP.

GFP Antibody-green



Immunofluorescent analysis of 293 cells, using GFP Antibody



Immunohistochemical analysis of paraffin-embedded GFP transgenic human colon, using GFP Antibody.

## Background

Green fluorescent protein(GFP) has been engineered to produce a vast number of variously colored mutants, fusion proteins, and biosensors. Fluorescent proteins and its mutated allelic forms, blue, cyan and yellow have become a useful and ubiquitous tool for making chimeric proteins, where they function as a fluorescent protein tag. Typically they tolerate N- and C-terminal fusion to a broad variety of proteins.

Note: This product is for in vitro research use only