

Skp2 p45 Polyclonal Antibody

Catalog No: #41438

Package Size: #41438-1 50ul #41438-2 100ul

Orders: order@signalwayantibody.comSupport: tech@signalwayantibody.com

Description

Product Name	Skp2 p45 Polyclonal Antibody
Host Species	Rabbit
Clonality	Polyclonal
Purification	The antibody was affinity-purified from rabbit antiserum by affinity-chromatography using epitope-specific immunogen.
Applications	WB IHC IF ELISA
Species Reactivity	Hu
Specificity	Skp2 p45 Polyclonal Antibody detects endogenous levels of Skp2 p45 protein.
Immunogen Type	peptide
Immunogen Description	Synthesized peptide derived from the C-terminal region of human Skp2 p45.
Target Name	Skp2 p45
Other Names	SKP2; FBXL1; S-phase kinase-associated protein 2; Cyclin-A/CDK2-associated protein p45; F-box protein Skp2; F-box/LRR-repeat protein 1; p45skp2
Accession No.	Swiss-Prot: Q13309NCBI Gene ID: 6502
Uniprot	Q13309
GeneID	6502;
SDS-PAGE MW	47kd
Concentration	1mg/ml
Formulation	Liquid in PBS containing 50% glycerol, 0.5% BSA and 0.02% sodium azide.
Storage	Store at -20°C/1 year

Application Details

Western Blot: 1/500 - 1/2000.

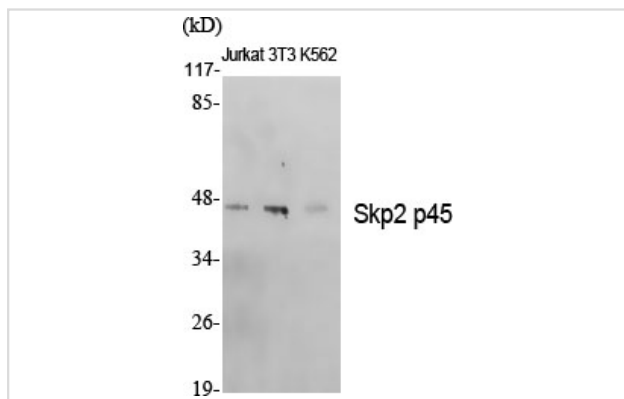
Immunohistochemistry: 1/100 - 1/300.

Immunofluorescence: 1/200 - 1/1000.

ELISA: 1/20000.

Not yet tested in other applications.

Images



Western Blot analysis of Jurkat NIH-3T3 K562 cells using Skp2 p45 Polyclonal Antibody

Note: This product is for in vitro research use only