

## IL17 Antibody

Catalog No: #48308

Package Size: #48308-1 50ul #48308-2 100ul

Orders: order@signalwayantibody.com

Support: tech@signalwayantibody.com

## Description

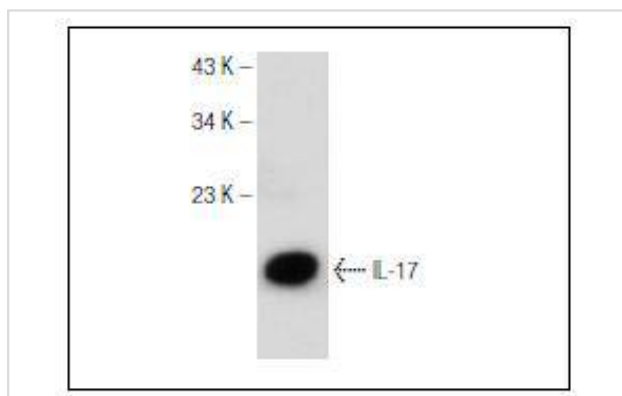
Product Name	IL17 Antibody
Host Species	Mouse
Clone No.	4G2
Purification	ProA affinity purified
Applications	WB, IP, IF
Species Reactivity	Hu, Ms, Rt
Immunogen Description	peptide
Other Names	CTLA 8 antibody CTLA-8 antibody CTLA8 antibody Cytotoxic T lymphocyte associated antigen 8 antibody Cytotoxic T lymphocyte associated protein 8 antibody Cytotoxic T lymphocyte associated serine esterase 8 antibody Cytotoxic T-lymphocyte-associated antigen 8 antibody IL 17A antibody IL-17 antibody IL-17A antibody IL17 antibody IL17_HUMAN antibody IL17a antibody Interleukin 17 (cytotoxic T lymphocyte associated serine esterase 8) antibody Interleukin 17A antibody Interleukin-17A antibody Interleukin17 antibody Interleukin17A antibody OTTHUMP00000016597 antibody OTTMUSP00000046003 antibody
Accession No.	Swiss-Prot#:Q16552
Uniprot	Q16552
GeneID	3605;
Calculated MW	15kDa
Formulation	1*TBS (pH7.4), 1%BSA, 40%Glycerol. Preservative: 0.05% Sodium Azide.
Storage	Store at 4°C

## Application Details

WB: 1:100-1:1,000

IP: 1-2 µg per 100-500 µg of total protein(1 ml of cell lysate)

## Images



Western blot analysis of human recombinant IL-17.

## Background

---

Cytokines are small, soluble proteins with pleiotropic effects on a variety of cell types. Cytokines have a regulatory function over the immune system and mediate aspects of inflammatory response. They exert their biological effects through the binding of membrane-bound receptors which, in turn, initiate signal transduction cascades and elicit physiological changes in their target cell. Interleukin-17 (IL-17) and its cognate receptor, IL-17R, are an example of such a cytokine receptor pair. Originally identified as a rodent cDNA termed CTLA8, IL-17 is capable of inducing the secretion of IL-6 and IL-8 and augmenting the expression of ICAM-1 in human fibroblast cultures. The IL-17 protein exhibits a striking degree of homology with the HSV13 protein which mimics its function. The IL-17 receptor is a type I transmembrane protein 864 amino acids in length, that is highly expressed in spleen and kidney.

---

Note: This product is for in vitro research use only