

SLK Polyclonal Antibody

Catalog No: #41439

Package Size: #41439-1 50ul #41439-2 100ul

Orders: order@signalwayantibody.com

Support: tech@signalwayantibody.com

Description

Product Name	SLK Polyclonal Antibody
Host Species	Rabbit
Clonality	Polyclonal
Purification	The antibody was affinity-purified from rabbit antiserum by affinity-chromatography using epitope-specific immunogen.
Applications	WB IHC IF ELISA
Species Reactivity	Hu Ms Rt
Specificity	SLK Polyclonal Antibody detects endogenous levels of SLK protein.
Immunogen Type	peptide
Immunogen Description	Synthesized peptide derived from the C-terminal region of human SLK.
Target Name	SLK
Other Names	SLK; KIAA0204; STK2; STE20-like serine/threonine-protein kinase; STE20-like kinase; hSLK; CTCL tumor antigen se20-9; STE20-related serine/threonine-protein kinase; STE20-related kinase; Serine/threonine-protein kinase 2
Accession No.	Swiss-Prot: Q9H2G2NCBI Gene ID: 9748
Uniprot	Q9H2G2
GeneID	9748;
SDS-PAGE MW	150kd
Concentration	1mg/ml
Formulation	Liquid in PBS containing 50% glycerol, 0.5% BSA and 0.02% sodium azide.
Storage	Store at -20°C/1 year

Application Details

Western Blot: 1/500 - 1/2000.

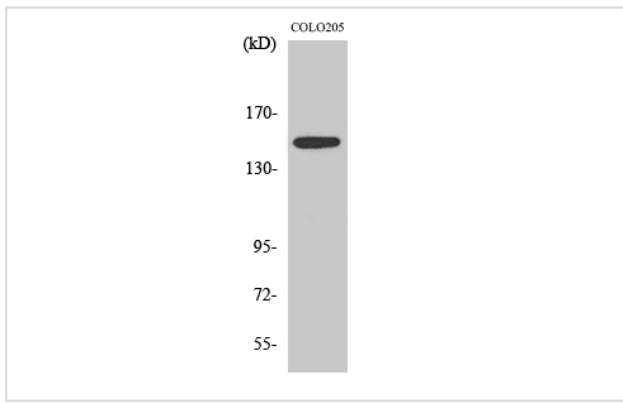
Immunohistochemistry: 1/100 - 1/300.

Immunofluorescence: 1/200 - 1/1000.

ELISA: 1/5000.

Not yet tested in other applications.

Images



Western Blot analysis of COLO205 cells using SLK Polyclonal Antibody

Note: This product is for in vitro research use only