

LC3B Antibody

Catalog No: #48312



Package Size: #48312-1 50ul #48312-2 100ul

Orders: order@signalwayantibody.com
Support: tech@signalwayantibody.com

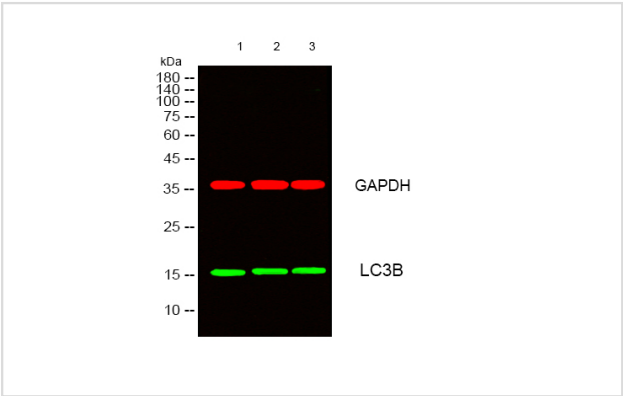
Description

| | |
|-----------------------|--|
| Product Name | LC3B Antibody |
| Host Species | Rabbit |
| Clonality | Polyclonal |
| Purification | Immunogen affinity purified |
| Applications | WB,IF/ICC,IHC-p |
| Species Reactivity | Hu, Ms, Rt |
| Specificity | The antibody detects endogenous MAP LC3β protein. |
| Immunogen Description | Recombinant Protein of MAP LC3β |
| Other Names | MAP1LC3B; MAP1ALC3; Microtubule-associated proteins 1A/1B light chain 3B; Autophagy-related protein LC3 B; Autophagy-related ubiquitin-like modifier LC3 B; MAP1 light chain 3-like protein 2; MAP1A/MAP1B light chain 3 B; MAP1A/MAP1B LC3 B; Microtubule-associated protein 1 light chain 3 beta |
| Accession No. | Swiss-Prot#:Q9GZQ8 |
| Uniprot | Q9GZQ8 |
| GeneID | 81631; |
| Calculated MW | 15 kDa |
| Formulation | PBS, pH 7.4, containing 0.5%BSA, 0.02% sodium azide as Preservative and 50% Glycerol. |
| Storage | Store at -20°C |

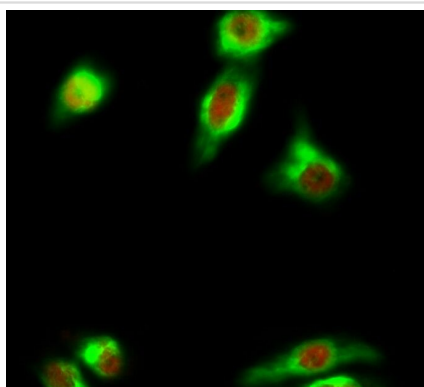
Application Details

WB: 1:1000-2000
IHC: 1:200-500
IF: 1:200

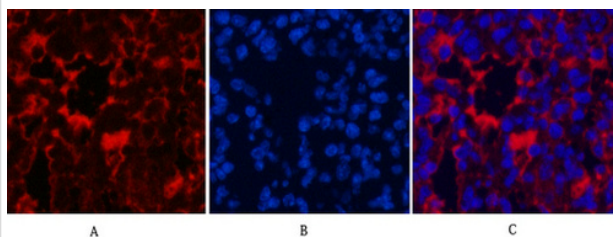
Images



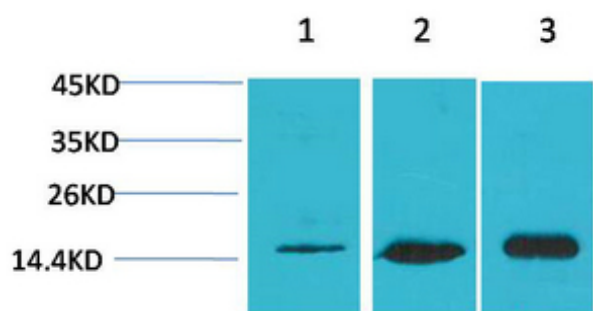
Western blot analysis of lysates from 1) Hela, 2) 3T3, 3) Rat Brain Tissue cells, oO GreenoO primary antibody was diluted at 1:1000, 4° over night, secondary antibody was diluted at 1:10000, 37° 1hour. oO RedoO GAPDH Monoclonal Antibody(2B8) antibody was diluted at 1:5000 as loading control, 4° over night,secondary antibody was diluted at 1:10000, 37° 1hour.



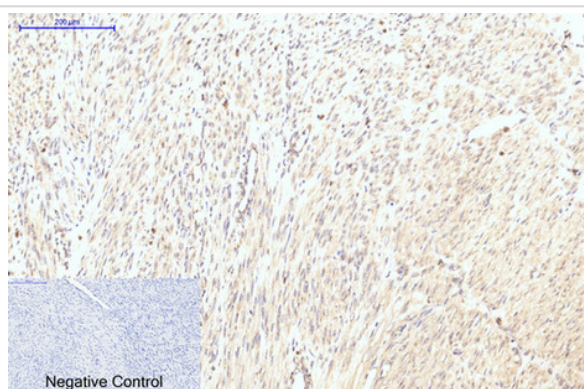
Immunofluorescence analysis of HeLa cell. 1, Cleaved-PARP-1 (D214) Polyclonal Antibody (red) was diluted at 1:200 (4°C overnight). LC3B Polyclonal Antibody (green) was diluted at 1:200 (4°C overnight). 2, Goat Anti Rabbit Alexa Fluor 594 was diluted at 1:1000 (room temperature, 50min). Goat Anti Mouse Alexa Fluor 488 was diluted at 1:1000 (room temperature, 50min).



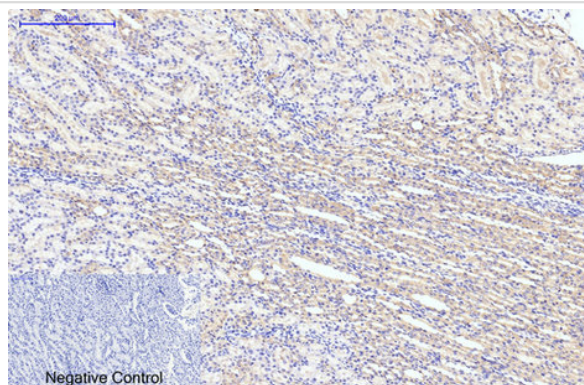
Immunofluorescence analysis of mouse lung tissue. 1, LC3B Polyclonal Antibody (red) was diluted at 1:200 (4°C overnight). 2, Cy3 labeled Secondary antibody was diluted at 1:300 (room temperature, 50min). 3, Picture B: DAPI (blue) 10min. Picture A: Target. Picture B: DAPI. Picture C: merge of A+B



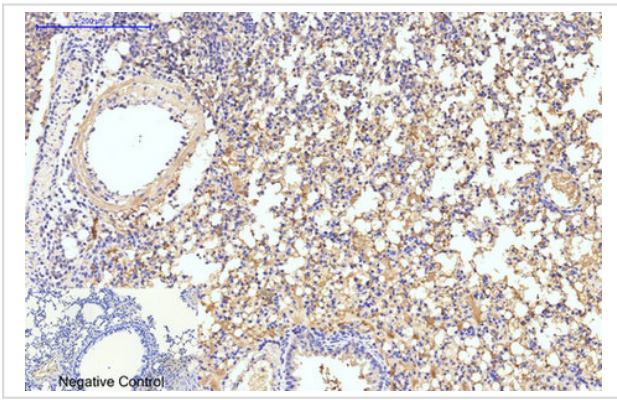
Western blot analysis of 1) HeLa, 2) 3T3, 3) Rat Brain Tissue using MAP LC3β Polyclonal Antibody. Secondary antibody was diluted at 1:20000



Immunohistochemical analysis of paraffin-embedded Human-uterus-cancer tissue. 1, LC3B Polyclonal Antibody was diluted at 1:200 (4°C overnight). 2, Sodium citrate pH 6.0 was used for antibody retrieval (>98°C, 20min). 3, Secondary antibody was diluted at 1:200 (room temperature, 30min). Negative control was used by secondary antibody only.



Immunohistochemical analysis of paraffin-embedded Rat-kidney tissue. 1, LC3B Polyclonal Antibody was diluted at 1:200 (4°C overnight). 2, Sodium citrate pH 6.0 was used for antibody retrieval (>98°C, 20min). 3, Secondary antibody was diluted at 1:200 (room temperature, 30min). Negative control was used by secondary antibody only.



Immunohistochemical analysis of paraffin-embedded Mouse-lung tissue. 1,LC3B Polyclonal Antibody was diluted at 1:200(4°C,overnight). 2, Sodium citrate pH 6.0 was used for antibody retrieval(>98°C,20min). 3,Secondary antibody was diluted at 1:200(room tempeRature, 30min). Negative control was used by secondary antibody only.

Background

microtubule associated protein 1 light chain 3 beta(MAP1LC3B) Homo sapiens The product of this gene is a subunit of neuronal microtubule-associated MAP1A and MAP1B proteins, which are involved in microtubule assembly and important for neurogenesis. Studies on the rat homolog implicate a role for this gene in autophagy, a process that involves the bulk degradation of cytoplasmic component. [provided by RefSeq, Jul 2008],

Note: This product is for in vitro research use only