

Smad1/5/9 Polyclonal Antibody

Catalog No: #41441

Package Size: #41441-1 50ul #41441-2 100ul

Orders: order@signalwayantibody.comSupport: tech@signalwayantibody.com

Description

Product Name	Smad1/5/9 Polyclonal Antibody
Host Species	Rabbit
Clonality	Polyclonal
Purification	The antibody was affinity-purified from rabbit antiserum by affinity-chromatography using epitope-specific immunogen.
Applications	WB IHC ELISA
Species Reactivity	Hu Ms Rt
Specificity	Smad1/5/9 Polyclonal Antibody detects endogenous levels of Smad1/5/9 protein.
Immunogen Type	peptide
Immunogen Description	Synthesized peptide derived from the N-terminal region of human Smad1/5/9.
Target Name	Smad1/5/9
Other Names	SMAD1; BSP1; MADH1; MADR1; Mothers against decapentaplegic homolog 1; MAD homolog 1; Mothers against DPP homolog 1; JV4-1; Mad-related protein 1; SMAD family member 1; SMAD 1; Smad1; hSMAD1; Transforming growth factor-beta-signaling protein
Accession No.	Swiss-Prot: Q15797/Q99717/O15198NCBI Gene ID: 4086/4090/4093
Uniprot	Q15797
GeneID	4086;
SDS-PAGE MW	56kd
Concentration	1mg/ml
Formulation	Liquid in PBS containing 50% glycerol, 0.5% BSA and 0.02% sodium azide.
Storage	Store at -20°C/1 year

Application Details

Western Blot: 1/500 - 1/2000.

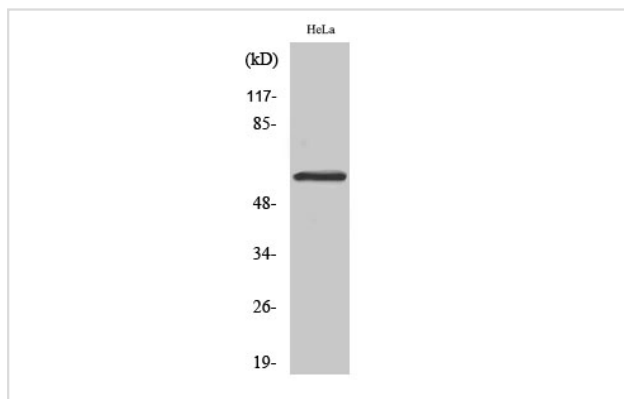
Immunohistochemistry: 1/100 - 1/300.

ELISA: 1/10000.

Not yet tested in other applications.

Images

Western Blot analysis of HeLa cells using Smad1/5/9 Polyclonal Antibody



Note: This product is for in vitro research use only