

Serum Amyloid A (SAA) Antibody

Catalog No: #48336

Package Size: #48336-1 50ul #48336-2 100ul

Orders: order@signalwayantibody.com

Support: tech@signalwayantibody.com

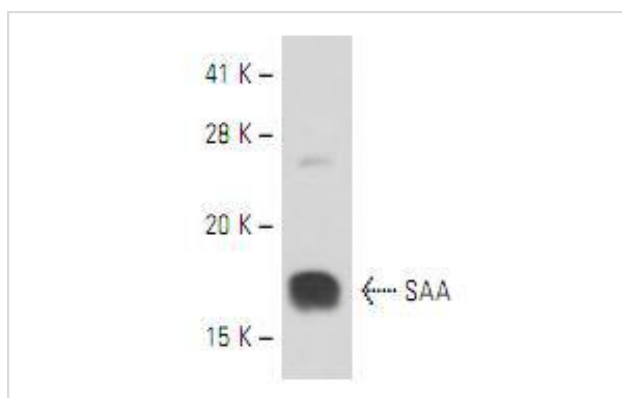
Description

Product Name	Serum Amyloid A (SAA) Antibody
Host Species	Mouse
Clonality	Monoclonal
Clone No.	4G08
Purification	ProA affinity purified
Applications	WB, IP
Species Reactivity	Hu
Immunogen Description	Highly purified recombinant SAA of human origin
Other Names	Amyloid fibril protein AA antibody Amyloid fibrils antibody Amyloid protein A antibody Fibrils antibody MGC111216 antibody OC antibody PIG 4 antibody PIG4 antibody SAA 1 antibody SAA 2 antibody SAA antibody SAA_HUMAN antibody SAA1 antibody SAA2 antibody Serum amyloid A protein precursor antibody Serum amyloid A1 isoform 1 antibody Serum amyloid A1 isoform 2 antibody Serum amyloid protein A(4-101) antibody TP53I4 antibody Tumor protein p53 inducible protein 4 antibody
Accession No.	Swiss-Prot:P02735Gene ID:6288
Uniprot	P0DJ18
GeneID	6288;
Calculated MW	12kDa
Formulation	1*TBS (pH7.4), 1%BSA, 40%Glycerol. Preservative: 0.05% Sodium Azide.
Storage	Store at -20°C

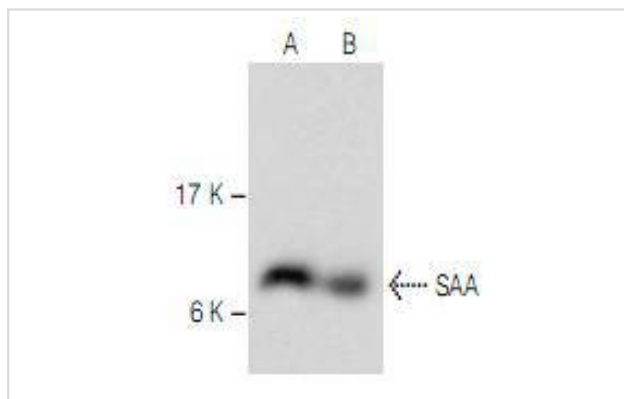
Application Details

WB: 1:100-1:1,000IP: 1-2 µg per 100-500 µg of total protein(1 ml of cell lysate)

Images



Western blot analysis of human recombinant SAA.



Western blot analysis of SAA expression in Caki-1 whole cell lysate (A) and of SAA human plasma (B).

Background

The serum Amyloid A (SAA) family of proteins is encoded by multiple genes, which display allelic variation and a high degree of homology in mammals. The four members of the SAA gene family are clustered on human chromosome 11p15.1. Three SAA genes are differentially expressed and encode small apolipoproteins. SAA1 and SAA2 encode the acute phase SAAs (A-SAAs) and SAA4 encodes the constitutively expressed SAA (C-SAA). A fourth locus, SAA3, is a pseudogene that contains two C/EBP-binding sites and a third site, which interacts with SAA3 enhancer factor. Human SAA proteins are a group of apolipoproteins found predominantly in the high-density lipoprotein (HDL) fraction of plasma. SAA is a major acute-phase protein and precursor to Amyloid A protein, which is the major constituent of the fibril deposits of reactive amyloidosis. SAA is secreted in large amounts by the liver during microbial infections or inflammatory diseases.

References

Note: This product is for in vitro research use only