

## Smad2 Polyclonal Antibody

Catalog No: #41442

Package Size: #41442-1 50ul #41442-2 100ul

Orders: [order@signalwayantibody.com](mailto:order@signalwayantibody.com)Support: [tech@signalwayantibody.com](mailto:tech@signalwayantibody.com)

## Description

Product Name	Smad2 Polyclonal Antibody
Host Species	Rabbit
Clonality	Polyclonal
Purification	The antibody was affinity-purified from rabbit antiserum by affinity-chromatography using epitope-specific immunogen.
Applications	WB IHC IF ELISA
Species Reactivity	Hu Ms Rt
Specificity	Smad2 Polyclonal Antibody detects endogenous levels of Smad2 protein.
Immunogen Type	peptide
Immunogen Description	Synthesized peptide derived from human Smad2 around the non-phosphorylation site of S467.
Target Name	Smad2
Other Names	SMAD2; MADH2; MADR2; Mothers against decapentaplegic homolog 2; MAD homolog 2; Mothers against DPP homolog 2; JV18-1; Mad-related protein 2; hMAD-2; SMAD family member 2; SMAD 2; Smad2; hSMAD2
Accession No.	Swiss-Prot: Q15796NCBI Gene ID: 4087
Uniprot	Q15796
GeneID	4087;
SDS-PAGE MW	58kd
Concentration	1mg/ml
Formulation	Liquid in PBS containing 50% glycerol, 0.5% BSA and 0.02% sodium azide.
Storage	Store at -20°C/1 year

## Application Details

Western Blot: 1/500 - 1/2000.

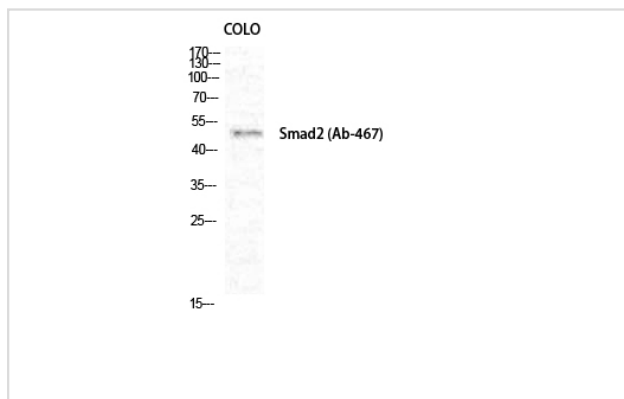
Immunohistochemistry: 1/100 - 1/300.

Immunofluorescence: 1/200 - 1/1000.

ELISA: 1/5000.

Not yet tested in other applications.

## Images



Western Blot analysis of COLO cells using Smad2 Polyclonal Antibody

Note: This product is for in vitro research use only