

β -tubulin Antibody

Catalog No: #48352

Package Size: #48352-1 50ul #48352-2 100ul

Orders: order@signalwayantibody.com

Support: tech@signalwayantibody.com

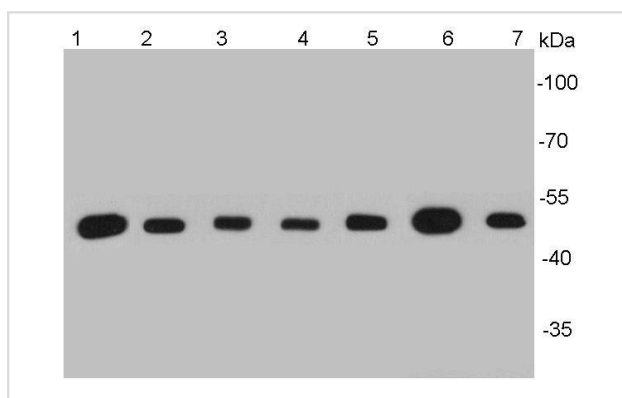
Description

Product Name	β -tubulin Antibody
Host Species	Mouse
Clonality	Monoclonal
Clone No.	1-B11
Purification	ProA affinity purified
Applications	WB, ICC, IHC, FC
Species Reactivity	Hu,Ms,Rt,zebrafish
Immunogen Description	peptide
Other Names	Beta 4 tubulin antibody Beta 5 tubulin antibody BetaTubulin antibody TBB5_HUMAN antibody TUBB antibody TUBB2 antibody TUBB2A antibody TUBB5 antibody tubulin beta 2A antibody Tubulin beta chain antibody Tubulin beta-5 chain antibody
Accession No.	Swiss-Prot#:P07437
Uniprot	P07437
GeneID	203068;
Calculated MW	50 kDa
Formulation	1*TBS (pH7.4), 1%BSA, 40%Glycerol. Preservative: 0.05% Sodium Azide.
Storage	Store at -20°C

Application Details

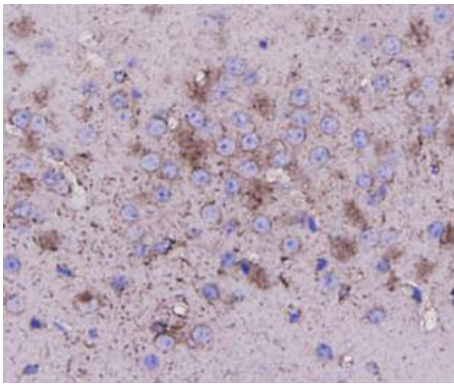
WB: 1:5,000-1:10,000 IHC: 1:20 ICC: 1:200 FC: 1:50-1:100

Images

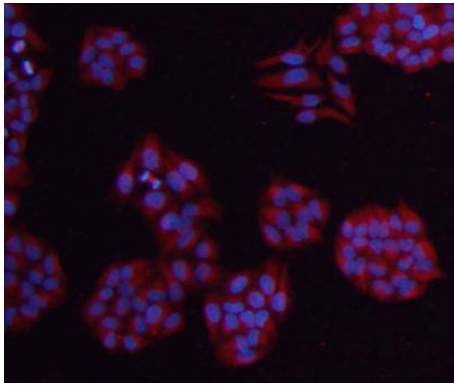


Western blot analysis of β -tubulin on different cell lysates using anti- β -tubulin antibody at 1/5000 dilution. Positive control:

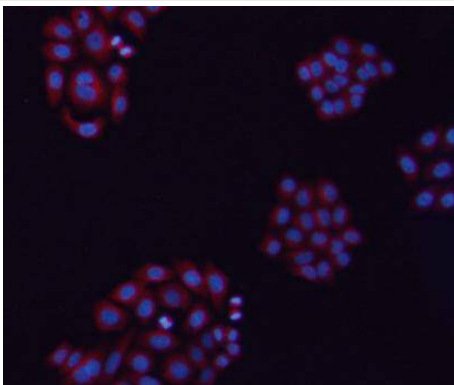
Lane 1: NCCIT
 Lane 2: NIH/3T3
 Lane 3: PC12
 Lane 4: Mouse heart
 Lane 5: F9
 Lane 6: zebrafish brain
 Lane 7: HeLa



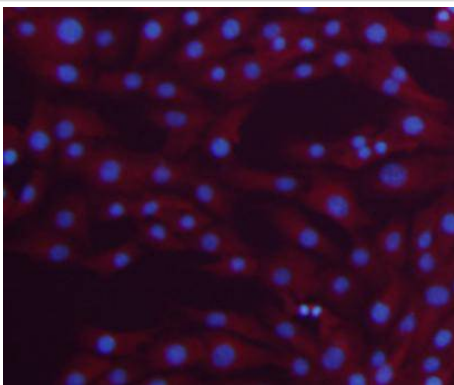
Immunohistochemical analysis of paraffin-embedded mouse brain tissue using anti- β -tubulin antibody. Counter stained with hematoxylin.



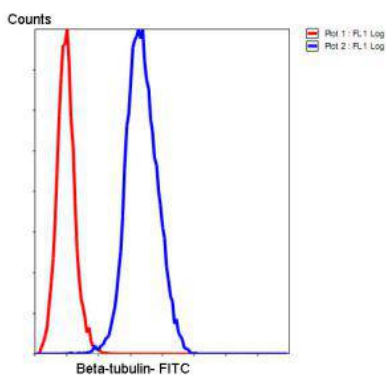
ICC staining β -tubulin in HeLa cells (red). The nuclear counter stain is DAPI (blue). Cells were fixed in paraformaldehyde, permeabilised with 0.25% Triton X100/PBS.



ICC staining β -tubulin in HepG2 cells (red). The nuclear counter stain is DAPI (blue). Cells were fixed in paraformaldehyde, permeabilised with 0.25% Triton X100/PBS.



ICC staining β -tubulin in NIH/3T3 cells (red). The nuclear counter stain is DAPI (blue). Cells were fixed in paraformaldehyde, permeabilised with 0.25% Triton X100/PBS.



Flow cytometric analysis of HeLa cells with β -tubulin antibody at 1/50 dilution (blue) compared with an unlabelled control (cells without incubation with primary antibody; red). Goat anti mouse IgG (FITC) was used as the secondary antibody.

Background

Tubulin is one of several members of a small family of globular proteins. The most common members of the tubulin family are α -tubulin and β -tubulin. The beta-tubulin (relative molecular weight about 50 kDa) is counterpart of alpha-tubulin in tubulin heterodimer, it is coded by multiple tubulin genes and it is also posttranslationally modified. Heterogeneity of subunit is concentrated in C-terminal structural domain. Beta-Tubulin may have bound GTP or GDP. Under certain conditions β -tubulin can hydrolyze its bound GTP to GDP plus P_i , release the P_i , and exchange the GDP for GTP.

References

Note: This product is for in vitro research use only