

Chromogranin-A(C-term) Antibody

Catalog No: #48354

Package Size: #48354-1 50ul #48354-2 100ul

Orders: order@signalwayantibody.com

Support: tech@signalwayantibody.com

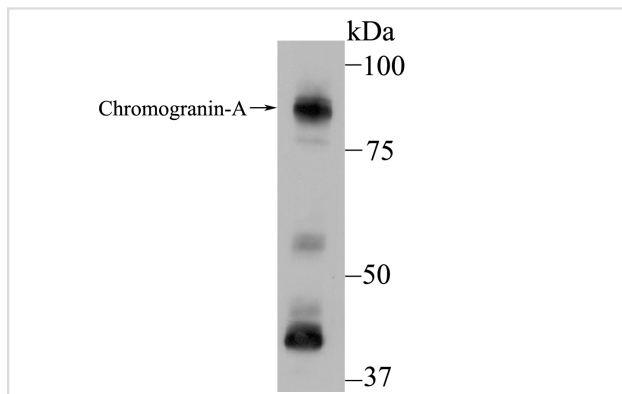
Description

Product Name	Chromogranin-A(C-term) Antibody
Host Species	Mouse
Clonality	Monoclonal
Clone No.	D11-2
Purification	ProA affinity purified
Applications	WB,IHC,ICC
Species Reactivity	Hu, Ms, Rt
Immunogen Description	Peptide
Other Names	beta Granin antibody betagranin (N-terminal fragment of chromogranin A) antibody catestatin antibody CgA antibody CHG A antibody Chga antibody chromofungin antibody Chromogranin A antibody Chromogranin A parathyroid secretory protein 1 antibody Chromogranin A precursor antibody ChromograninA antibody CMGA_HUMAN antibody ER-37 antibody Pancreastatin antibody Parastatin antibody Parathyroid secretory protein 1 antibody Pituitary secretory protein I antibody Secretory protein I antibody SP I antibody SP-I antibody SP1 antibody SPI antibody Vasostatin antibody Vasostatin I antibody Vasostatin II antibody
Accession No.	Swiss-Prot#:P10645
Uniprot	P10645
GeneID	1113;
Calculated MW	86 kDa
Formulation	1*TBS (pH7.4), 0.5%BSA, 50%Glycerol. Preservative: 0.05% Sodium Azide.
Storage	Store at -20°C

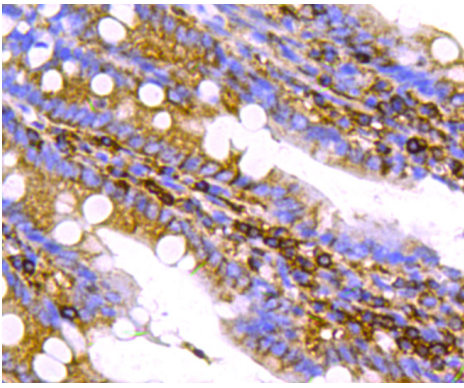
Application Details

WB: 1:500IHC: 1:50-1:200ICC: 1:50-1:200

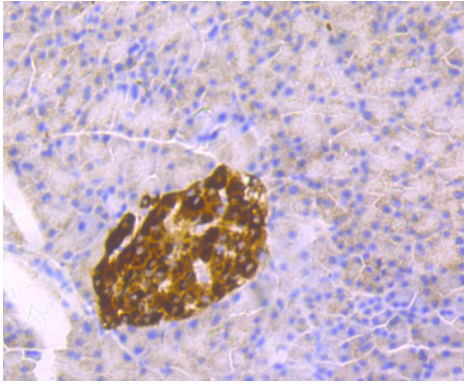
Images



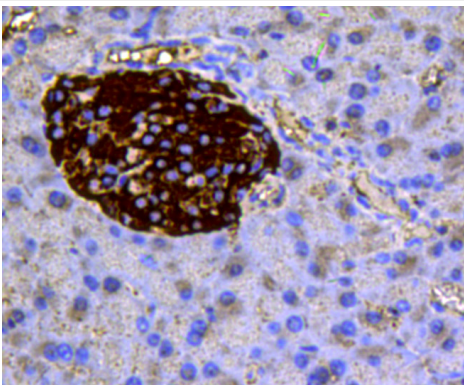
Western blot analysis of Chromogranin A on PC-12 using anti-Chromogranin A antibody at 1/500 dilution.



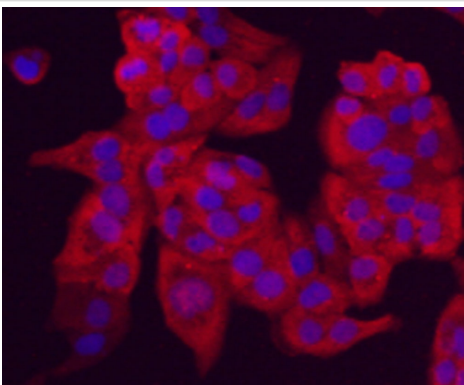
Immunohistochemical analysis of paraffin-embedded rat small intestine tissue using anti-Chromogranin A antibody. Counter stained with hematoxylin.



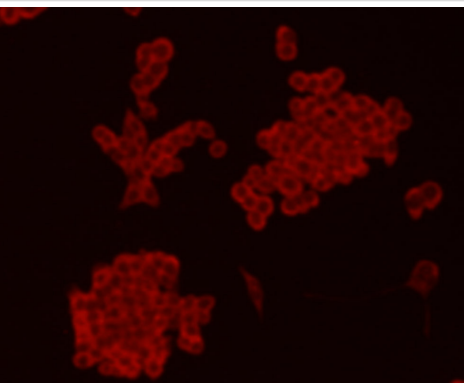
Immunohistochemical analysis of paraffin-embedded rat pancreas tissue using anti-Chromogranin A antibody. Counter stained with hematoxylin.



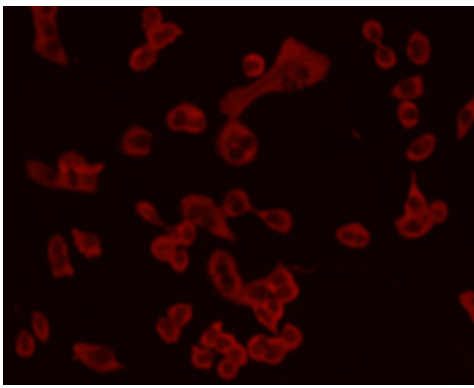
Immunohistochemical analysis of paraffin-embedded mouse pancreas tissue using anti-Chromogranin A antibody. Counter stained with hematoxylin.



ICC staining Chromogranin A(red) in HeLa cells. The nuclear counter stain is DAPI(blue). Cells were fixed in paraformaldehyde, permeabilised with 0.25% Triton X100/PBS.



ICC staining Chromogranin A(red) in LOVO cells. Cells were fixed in paraformaldehyde, permeabilised with 0.25% Triton X100/PBS.



ICC staining Chromogranin A(red) in PANC-1 cells. Cells were fixed in paraformaldehyde, permeabilised with 0.25% Triton X100/PBS.

Background

Chromogranins (secretogranins) are acidic glycoproteins that localize within secretory granules of endocrine, neuroendocrine and neuronal tissue. Family members include chromogranin A (Chr-A), chromogranin B (Chr-B, also known as secretogranin I) chromogranin C (also known as secretogranin II or Sg II), secretogranin III (Sg III or SCG3). High levels of Chr-A expression is a characteristic of neuroendocrine tumors. Pancreastatin is a peptide derived from Chr-A which inhibits insulin secretion, exocrine pancreatic secretion and gastric acid secretion. Pancreastatin exists as two forms; the major form is expressed in stomach and colon extracts. In neuroendocrine cells the level Sg II has been shown to increase four-fold in response to histamine, while levels of Chr-A and Chr-B showed little or no increase. Sg III is an acidic secretory protein expressed in neuronal and endocrine cells. In the anterior lobe of the rat pituitary gland, Sg III is present in mammatropes and thyrotropes, moderately in gonadotropes and corticotropes, though not in somatotropes. Sg III and carboxypeptidase E (CPE) bind specifically to cholesterol-rich secretory granule (SG) membranes.

References

Note: This product is for in vitro research use only