

Cytokeratin-7 Antibody

Catalog No: #48356

Package Size: #48356-1 50ul #48356-2 100ul

Orders: order@signalwayantibody.com

Support: tech@signalwayantibody.com

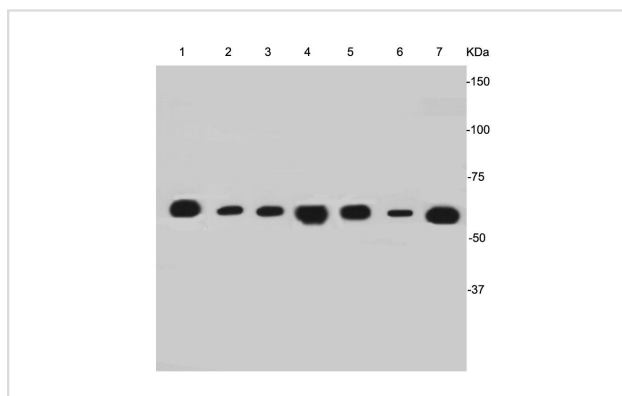
Description

Product Name	Cytokeratin-7 Antibody
Host Species	Mouse
Clonality	Monoclonal
Clone No.	3-G3-D8
Purification	ProA affinity purified
Applications	WB, IHC
Species Reactivity	Hu
Immunogen Description	peptide
Other Names	CK 7 antibody CK-7 antibody CK7 antibody Cytokeratin 7 antibody Cytokeratin-7 antibody D15Wsu77e antibody K2C7 antibody K2C7_HUMAN antibody K7 antibody Keratin 7 antibody Keratin 7, type II antibody Keratin type II cytoskeletal 7 antibody Keratin, 55K type II cytoskeletal antibody Keratin, simple epithelial antibody Keratin, simple epithelial type I, K7 antibody Keratin, type II cytoskeletal 7 antibody Keratin-7 antibody Krt2-7 antibody KRT7 antibody MGC11625 antibody MGC129731 antibody MGC3625 antibody Sarcolectin antibody SCL antibody Type II mesothelial keratin K7 antibody Type-II keratin Kb7 antibody
Accession No.	Swiss-Prot#:P08729
Uniprot	P08729
GeneID	3855;
Calculated MW	51 kDa
Formulation	1*TBS (pH7.4), 1%BSA, 40%Glycerol. Preservative: 0.05% Sodium Azide.
Storage	Store at -20°C

Application Details

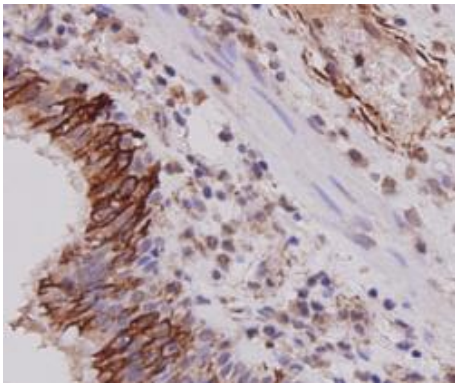
WB: 1:1,000 IHC: 1:200

Images

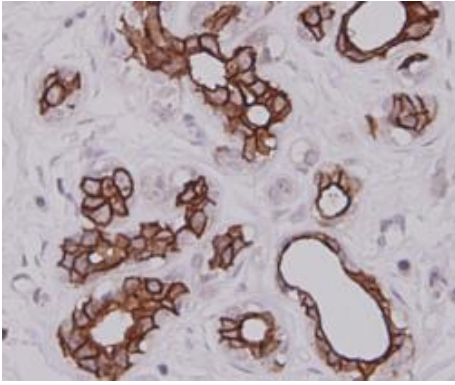


Western blot analysis of Cytokeratin-7 on different cell lysates using anti- Cytokeratin-7 antibody at 1/1000 dilution.

Positive?control: Lane 1: MCF-7 Lane 2: A549 Lane 3: Hela Lane 4: HepG2 Lane 5: SKBR3 Lane6: SKOV3 Lane 7: SW1990



Immunohistochemical analysis of paraffin-embedded human lung carcinoma tissue using anti-Cytokeratin-7 antibody. Counter stained with hematoxylin.



Immunohistochemical analysis of paraffin-embedded human breast tissue using anti-Cytokeratin-7 antibody. Counter stained with hematoxylin.

Background

Keratin-7 is a member of the keratin gene family. The type II cytokeratins consist of basic or neutral proteins which are arranged in pairs of heterotypic keratin chains coexpressed during differentiation of simple and stratified epithelial tissues. Keratin-7 is found in simple glandular epithelia, and in transitional epithelium. Epithelial cells of the lung and breast both contain keratin-7, but some other glandular epithelia, such as those of the colon and prostate, do not. Because the keratin-7 antigen is found in both healthy and neoplastic cells, antibodies to CK7 can be used in immunohistochemistry to distinguish ovarian and transitional cell carcinomas from colonic and prostate cancers, respectively.

References

Note: This product is for in vitro research use only