

EP-CAM Antibody

Catalog No: #48359



Package Size: #48359-1 50ul #48359-2 100ul

Orders: order@signalwayantibody.com

Support: tech@signalwayantibody.com

Description

Product Name	EP-CAM Antibody
Host Species	Mouse
Clone No.	3-E1-E2
Purification	ProL affinity purified
Applications	WB, ICC, IHC, FC
Species Reactivity	Hu,Ms
Immunogen Description	recombinant protein
Other Names	17 1A antibody 323/A3 antibody Adenocarcinoma associated antigen antibody Adenocarcinoma-associated antigen antibody Antigen identified by monoclonal antibody AUA1 antibody AUA1 antibody CD326 antibody CD326 antigen antibody Cell surface glycoprotein Trop 1 antibody Cell surface glycoprotein Trop 2 antibody Cell surface glycoprotein Trop-1 antibody CO 17A antibody CO17 1A antibody CO17A antibody DIAR5 antibody EGP 2 antibody EGP antibody EGP2 antibody EGP314 antibody EGP40 antibody Ep CAM antibody Ep-CAM antibody EPCAM antibody EPCAM_HUMAN antibody EpCAM1 antibody Epithelial cell adhesion molecule antibody Epithelial Cell Adhesion Molecule Intracellular Domain (EpCAM-ICD) antibody Epithelial cell surface antigen antibody Epithelial cellular adhesion molecule antibody Epithelial glycoprotein 1 antibody Epithelial glycoprotein 314 antibody Epithelial glycoprotein antibody ESA antibody GA733 1 antibody GA733 2 antibody GA733-2 antibody gastrointestinal tumor-associated antigen 2, 35-KD glycoprotein antibody gp4 antibody hEGP 2 antibody hEGP314 antibody HNPCC8 antibody Human epithelial glycoprotein 2 antibody KS 1/4 antigen antibody KS1/4 antibody KSA antibody Ly74 antibody Lymphocyte antigen 74 antibody M1S 1 antibody M1S2 antibody M4S1 antibody Major gastrointestinal tumor associated protein GA733 2 antibody Major gastrointestinal tumor-associated protein GA733-2 antibody mEGP314 antibody Membrane component chromosome 4 surface marker (35kD glycoprotein) antibody Membrane component, chromosome 4, surface marker 1 antibody Membrane component, chromosome 4, surface marker antibody MIC18 antibody MK 1 antibody Protein 289A antibody TACD1 antibody TACSTD1 antibody TROP1 antibody Tumor associated calcium signal transducer 1 antibody Tumor associated calcium signal transducer 2 precursor antibody Tumor-associated calcium signal transducer 1 antibody
Accession No.	Swiss-Prot#:P16422
Uniprot	P16422
GeneID	4072;
Calculated MW	35 kDa
Concentration	2 mg/mL
Formulation	1*TBS (pH7.4), 1%BSA, 40%Glycerol. Preservative: 0.05% Sodium Azide.
Storage	Store at -20°C

Application Details

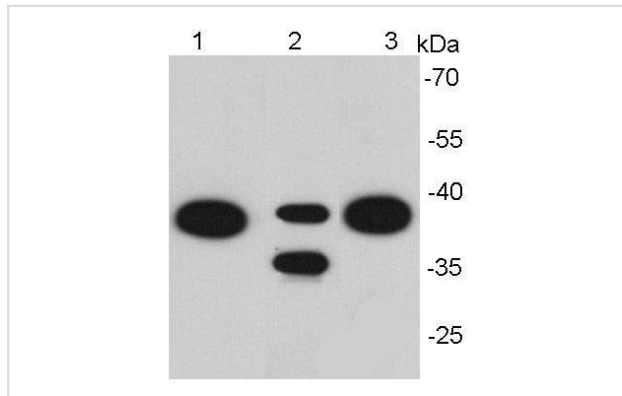
WB: 1:1,000-1:2,000

IHC: 1:200-1:500

ICC: 1:100-1:200

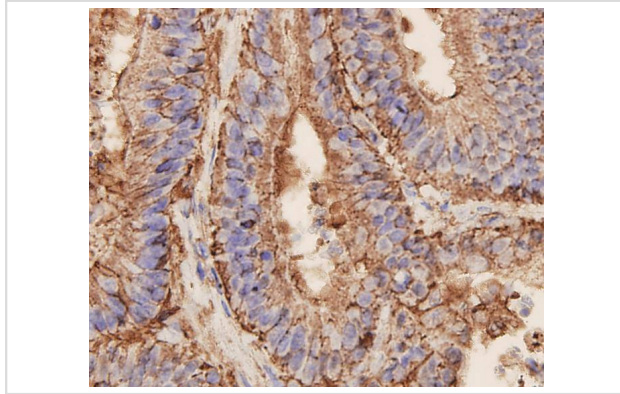
FC: 1:100-1:200

Images

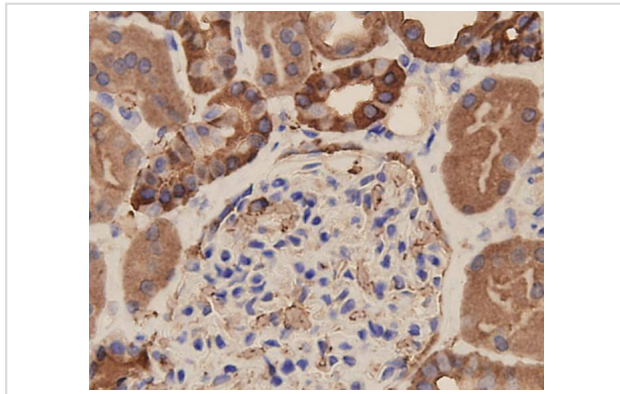


Western blot analysis of EpCAM on different cell lysates using anti- EpCAM antibody at 1/1000 dilution.

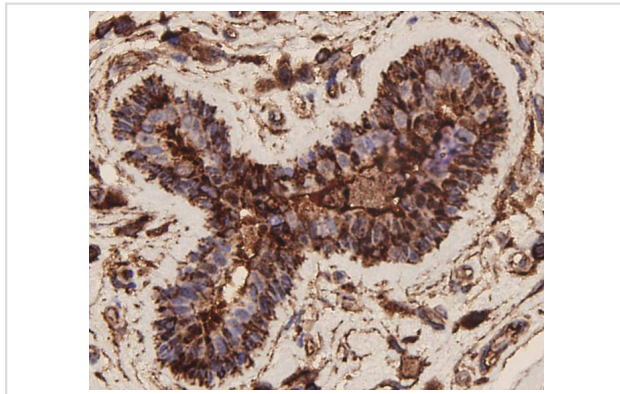
Positive control: Lane1: Hela Lane2: NIH/3T3 Lane3: MCF-7



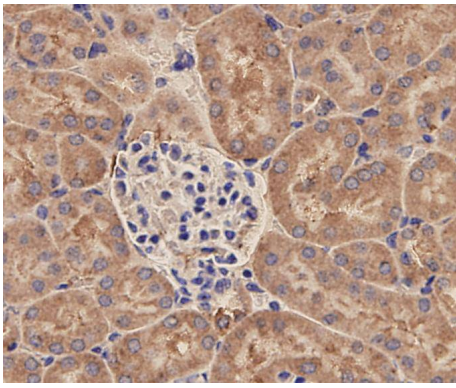
Immunohistochemical analysis of paraffin-embedded human colon carcinoma tissue using EpCAM antibody. Counter stained with hematoxylin.



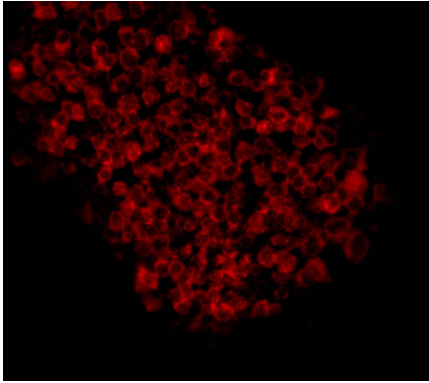
Immunohistochemical analysis of paraffin-embedded human kidney tissue using EpCAM antibody. Counter stained with hematoxylin.



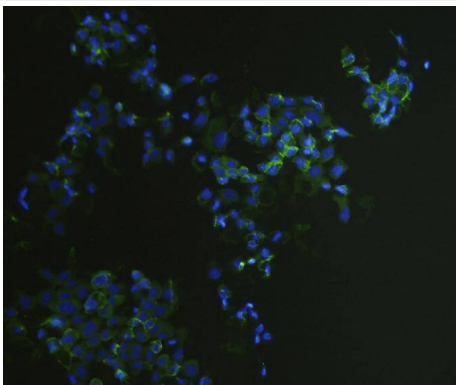
Immunohistochemical analysis of paraffin-embedded human breast carcinoma tissue using EpCAM antibody. Counter stained with hematoxylin.



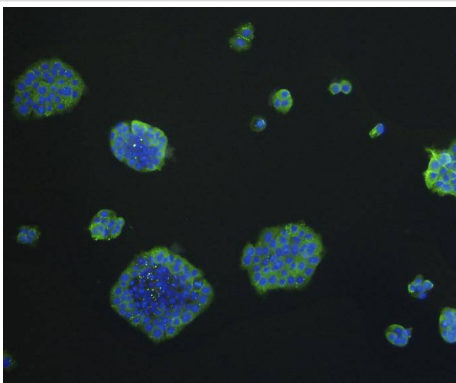
Immunohistochemical analysis of paraffin-embedded mouse kidney tissue using EpCAM antibody. Counter stained with hematoxylin.



ICC staining EpCAM in D3 cells (red). Cells were fixed in paraformaldehyde, permeabilised with 0.25% Triton X100/PBS.



ICC staining EpCAM in A431 cells (green). The nuclear counter stain is DAPI (blue). Cells were fixed in paraformaldehyde, permeabilised with 0.25% Triton X100/PBS.



ICC staining EpCAM in SW1990 cells (green). The nuclear counter stain is DAPI (blue). Cells were fixed in paraformaldehyde, permeabilised with 0.25% Triton X100/PBS.

Background

Epithelial cell adhesion molecule (EpCAM) is a transmembrane glycoprotein mediating Ca^{2+} -independent homotypic cell-cell adhesion in epithelia. EpCAM is also involved in cell signaling, migration, proliferation, and differentiation. Additionally, EpCAM has oncogenic potential via its capacity to upregulate c-myc, e-fabp, and cyclins A & E. Since EpCAM is expressed exclusively in epithelia and epithelial-derived neoplasms, EpCAM can be used as diagnostic marker for various cancers. It appears to play a role in tumorigenesis and metastasis of carcinomas, so it can also act as a potential prognostic marker and as a potential target for immunotherapeutic strategies. Mutations in EpCAM have also been associated with congenital tufting enteropathy which causes intractable diarrhea in newborn children. Specificity/Source: This antibody is produced by immunizing mice with recombinant protein corresponding to a region of EpCAM.

Note: This product is for in vitro research use only