

## Smad2/3 Polyclonal Antibody

Catalog No: #41444

Package Size: #41444-1 50ul #41444-2 100ul

Orders: [order@signalwayantibody.com](mailto:order@signalwayantibody.com)Support: [tech@signalwayantibody.com](mailto:tech@signalwayantibody.com)

## Description

Product Name	Smad2/3 Polyclonal Antibody
Host Species	Rabbit
Clonality	Polyclonal
Purification	The antibody was affinity-purified from rabbit antiserum by affinity-chromatography using epitope-specific immunogen.
Applications	WB IHC ELISA
Species Reactivity	Hu Ms Rt Mk
Specificity	Smad2/3 Polyclonal Antibody detects endogenous levels of Smad2/3 protein.
Immunogen Type	peptide
Immunogen Description	Synthesized peptide derived from human Smad2/3 around the non-phosphorylation site of T8.
Target Name	Smad2/3
Other Names	SMAD2; MADH2; MADR2; Mothers against decapentaplegic homolog 2; MAD homolog 2; Mothers against DPP homolog 2; JV18-1; Mad-related protein 2; hMAD-2; SMAD family member 2; SMAD 2; Smad2; hSMAD2; SMAD3; MADH3; Mothers against decapentaplegic
Accession No.	Swiss-Prot: Q15796/P84022NCBI Gene ID: 4087/4088
Uniprot	Q15796
GeneID	4087;
SDS-PAGE MW	48kd
Concentration	1mg/ml
Formulation	Liquid in PBS containing 50% glycerol, 0.5% BSA and 0.02% sodium azide.
Storage	Store at -20°C/1 year

## Application Details

Western Blot: 1/500 - 1/2000.

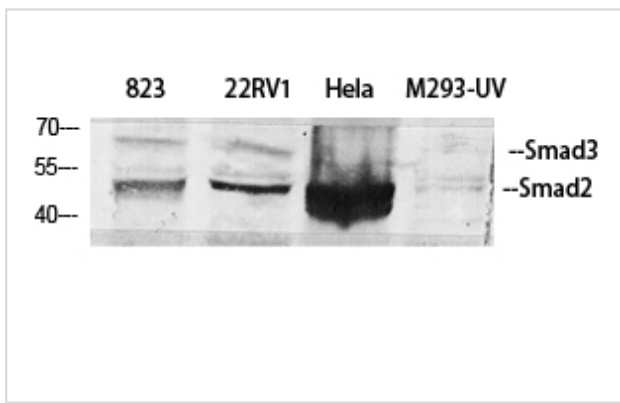
Immunohistochemistry: 1/100 - 1/300.

ELISA: 1/10000.

Not yet tested in other applications.

## Images

Western Blot analysis of 823 22RV1 HELA 293-UV cells using Smad2/3 Polyclonal Antibody



Note: This product is for in vitro research use only