

## CTHRC1 Antibody

Catalog No: #48364

Package Size: #48364-1 50ul #48364-2 100ul

Orders: order@signalwayantibody.com

Support: tech@signalwayantibody.com

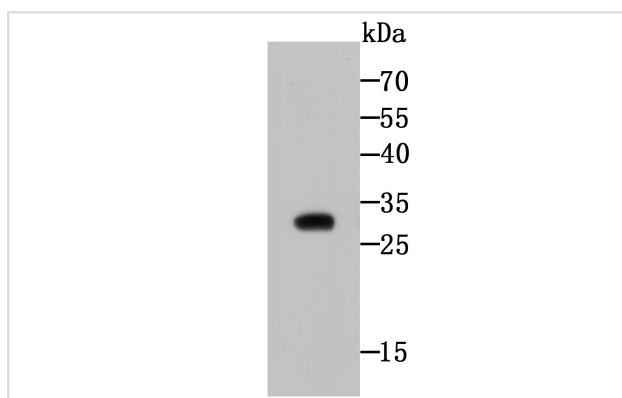
## Description

Product Name	CTHRC1 Antibody
Host Species	Mouse
Clonality	Monoclonal
Clone No.	5H1
Purification	ProA affinity purified.
Applications	WB,IHC
Species Reactivity	Hu, Ms, Rt
Immunogen Description	Recombinant protein
Other Names	Collagen triple helix repeat containing 1 antibody    Collagen triple helix repeat containing protein 1 antibody Collagen triple helix repeat-containing protein 1 antibody CTHR1_HUMAN antibody    Cthrc1 antibody NMTC1 protein antibody    Protein NMTC1 antibody
Accession No.	Swiss-Prot#:Q96CG8
Uniprot	Q96CG8
GeneID	115908;
Calculated MW	26 kDa
Formulation	1*TBS (pH7.4), 0.5%BSA, 50%Glycerol. Preservative: 0.05% Sodium Azide.
Storage	Store at -20°C

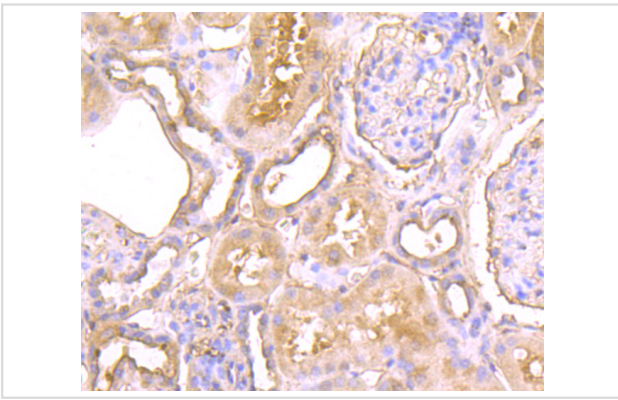
## Application Details

WB: 1:500-1:1,000    IHC: 1:50-1:200

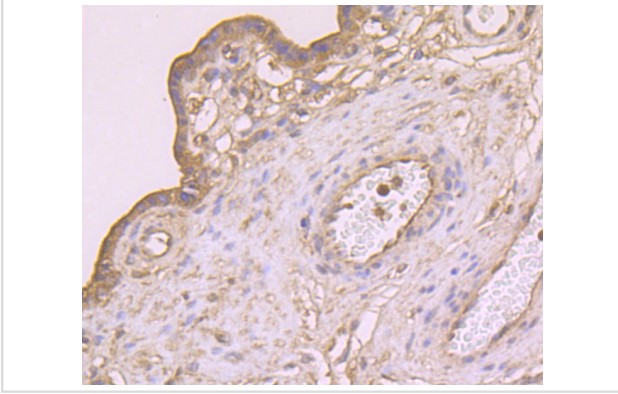
## Images



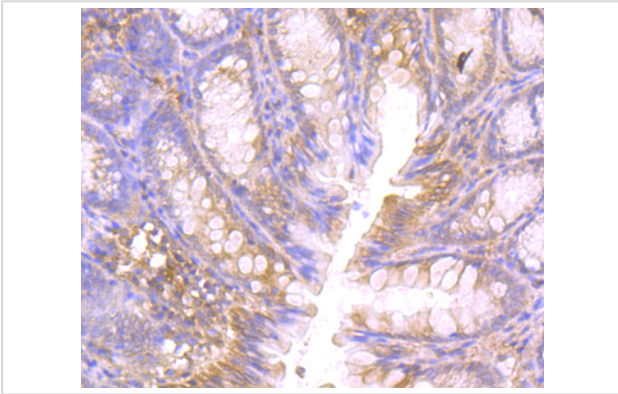
Western blot analysis of CTHRC1 on CTHRC1 recombinant protein using anti-CTHRC1 antibody at 1/500 dilution.



Immunohistochemical analysis of paraffin-embedded human kidney tissue using anti-CTHRC1 antibody. Counter stained with hematoxylin.



Immunohistochemical analysis of paraffin-embedded human placenta tissue using anti-CTHRC1 antibody. Counter stained with hematoxylin.



Immunohistochemical analysis of paraffin-embedded rat large intestine tissue using anti-CTHRC1 antibody. Counter stained with hematoxylin.

## Background

CTHRC1 (collagen triple helix repeat containing 1) is a 243 amino acid secreted protein that localizes to the extracellular matrix and contains one collagen-like domain. Expressed as two alternatively spliced isoforms, the first of which is expressed in calcified atherosclerotic plaque and chondrocyte-like cells, CTHRC1 is thought to function as a negative regulator of collagen matrix deposition and may also play a role in the stabilization of ligand-receptor interactions in the Wnt pathway. CTHRC1 is widely present in a variety of cancers, including melanoma and breast carcinoma, and may participate in cancer cell migration and cancer tissue invasion and metastasis. The gene encoding CTHRC1 maps to human chromosome 8, which consists of nearly 146 million base pairs, houses more than 800 genes and is associated with a variety of diseases and malignancies.

## References

Note: This product is for in vitro research use only