

LNP Antibody

Catalog No: #48367

Package Size: #48367-1 50ul #48367-2 100ul

Orders: order@signalwayantibody.comSupport: tech@signalwayantibody.com

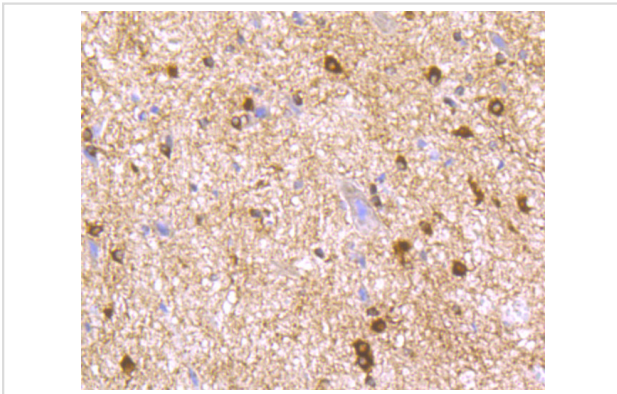
Description

Product Name	LNP Antibody
Host Species	Mouse
Clonality	Monoclonal
Clone No.	7-3
Purification	ProG affinity purified
Applications	IHC, ICC
Species Reactivity	Hu, Ms, Rt
Immunogen Description	Recombinant protein
Other Names	Inp antibody LNP_HUMAN antibody Protein lunapark antibody
Accession No.	Swiss-Prot#:Q9C0E8
Uniprot	Q9C0E8
GeneID	80856;
Calculated MW	47 kDa
Formulation	1*TBS (pH7.4), 0.5%BSA, 50%Glycerol. Preservative: 0.05% Sodium Azide.
Storage	Store at -20°C

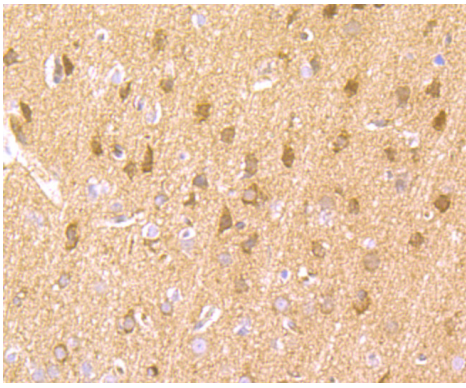
Application Details

IHC: 1:50-1:200 ICC: 1:50-1:200

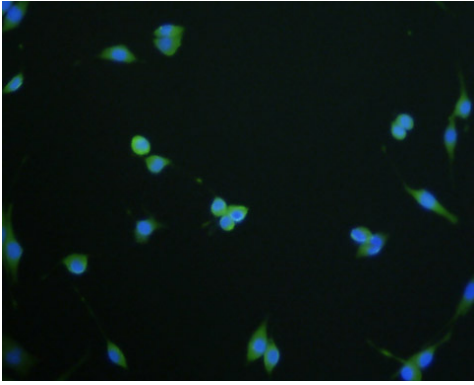
Images



Immunohistochemical analysis of paraffin-embedded rat spinal cord tissue using anti-LNP antibody. Counter stained with hematoxylin.



Immunohistochemical analysis of paraffin-embedded rat brain tissue using anti-LNP antibody. Counter stained with hematoxylin.



ICC staining LNP (green) in SHG-44 cells. The nuclear counter stain is DAPI (blue). Cells were fixed in paraformaldehyde, permeabilised with 0.25% Triton X100/PBS.

Background

Endoplasmic reticulum (ER)-shaping membrane protein that plays a role in determining ER morphology. Involved in the stabilization of nascent three-way ER tubular junctions within the ER network. May also play a role as a curvature-stabilizing protein within three-way ER tubular junction network. May be involved in limb and central nervous system development

References

Note: This product is for in vitro research use only