

PLEKHH1 Antibody

Catalog No: #48368

Package Size: #48368-1 50ul #48368-2 100ul

Orders: order@signalwayantibody.com

Support: tech@signalwayantibody.com

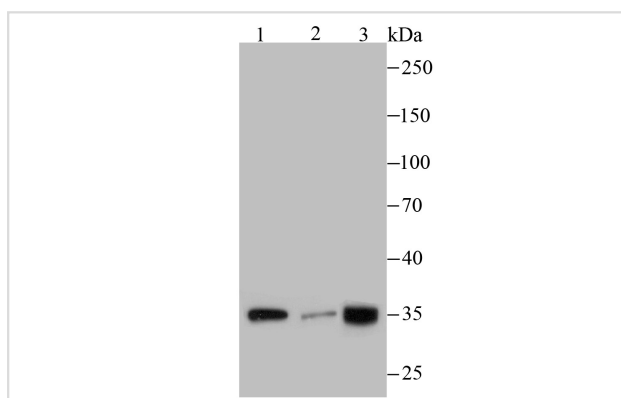
Description

Product Name	PLEKHH1 Antibody
Host Species	Mouse
Clonality	Monoclonal
Clone No.	3-E11
Purification	ProG affinity purified
Applications	WB,IHC,ICC
Species Reactivity	Hu, Ms
Immunogen Description	Recombinant protein
Other Names	KIAA1200 antibody PH domain containing family H member 1 antibody Pleckstrin homology domain containing, family H (with MyTH4 domain) member 1 antibody pleckstrin homology domain-containing family H member 1 antibody
Accession No.	Swiss-Prot#:Q9ULM0
Uniprot	Q9ULM0
GeneID	57475;
Calculated MW	151/30 kDa
Formulation	1*TBS (pH7.4), 0.5%BSA, 50%Glycerol. Preservative: 0.05% Sodium Azide.
Storage	Store at -20°C

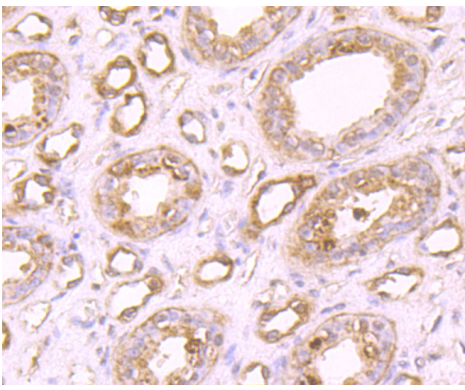
Application Details

WB: 1:500 IHC: 1:50-1:200 ICC: 1:50

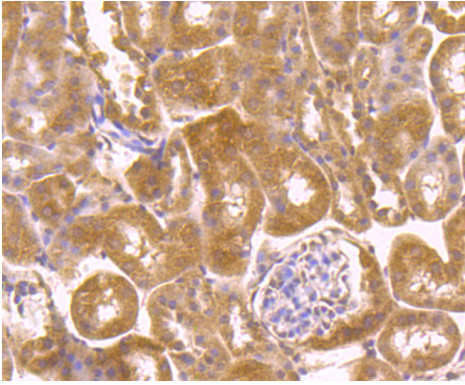
Images



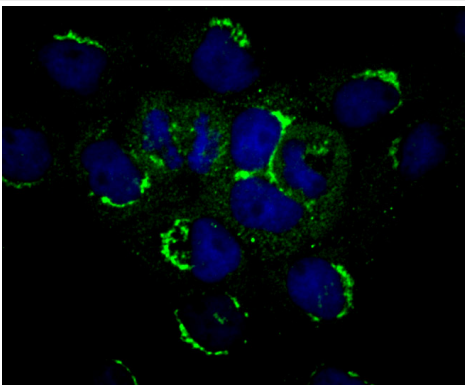
Western blot analysis of PLEKHH1 on different cell lysates using anti-PLEKHH1 antibody at 1/100 dilution. Positive control: Lane 1: MCF-7 Lane 2: A431 Lane 3: SH-SY5Y



Immunohistochemical analysis of paraffin-embedded human kidney tissue using anti-PLEKHH1 antibody. Counter stained with hematoxylin.



Immunohistochemical analysis of paraffin-embedded mouse kidney tissue using anti-PLEKHH1 antibody. Counter stained with hematoxylin.



ICC staining PLEKHH1 (green) in A431 cells. The nuclear counter stain is DAPI (blue). Cells were fixed in paraformaldehyde, permeabilised with 0.25% Triton X100/PBS.

Background

PLEKHH1 (Pleckstrin Homology, MyTH4 And FERM Domain Containing H1) is a Protein Coding gene. Diseases associated with PLEKHH1 include Gestational Trophoblastic Neoplasm. Critical component of the guidance pathway underlying endothelial cell migration and blood vessel patterning. Involved in mediating membrane localization of ephrin proteins, which have been shown to provide guidance cues for endothelial cell migration.

References

Note: This product is for in vitro research use only