

β -tubulin-HRP Antibody

Catalog No: #48375

Package Size: #48375-1 50ul #48375-2 100ul

Orders: order@signalwayantibody.com

Support: tech@signalwayantibody.com

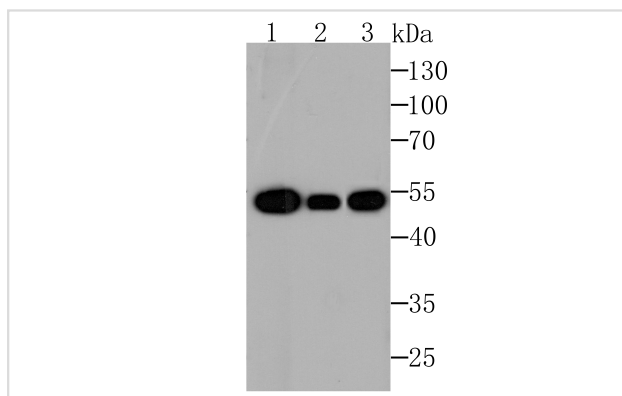
Description

Product Name	β -tubulin-HRP Antibody
Host Species	Mouse
Clonality	Monoclonal
Clone No.	1-B11
Purification	ProA affinity purified
Applications	WB,IHC
Species Reactivity	Hu, Ms, Rt, Zebrafish
Immunogen Description	Peptide
Other Names	Beta 4 tubulin antibody Beta 5 tubulin antibody beta 1b tubulin antibody Beta1 tubulin antibody Class I beta tubulin antibody M40 antibody MGC117247 antibody MGC16435 antibody OK/SW cl.56 antibody OK/SWcl.56 antibody TBB5_HUMAN antibody TUBB 1 antibody TUBB 2 antibody TUBB 5 antibody TUBB antibody TUBB1 antibody TUBB2 antibody TUBB5 antibody tubulin beta 1 chain antibody Tubulin beta 2 chain antibody tubulin beta 5 chain antibody Tubulin beta chain antibody Tubulin beta class I antibody tubulin beta polypeptide antibody Tubulin beta-5 chain antibody
Accession No.	Swiss-Prot#:P07437
Uniprot	P07437
GeneID	203068;
Calculated MW	50 kDa
Formulation	1*TBS (pH7.4), 0.5%BSA, 50%Glycerol. Preservative: 0.05% Sodium Azide.
Storage	Store at -20°C

Application Details

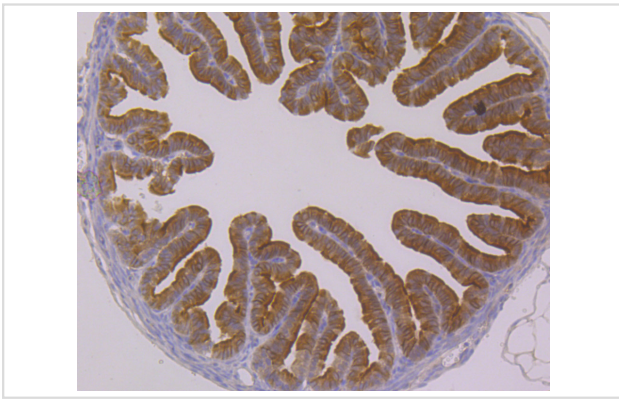
WB: 1:500-1:2,000 IHC: 1:50-1:200

Images



Western blot analysis of beta Tubulin-HRP on different lysates using anti-beta Tubulin-HRP antibody at 1/1,000 dilution.

Positive control Ω $\frac{1}{2}$ Ω $\frac{1}{2}$ Lane 1: Hela Lane 2: NIH-3T3 Lane 3: PC-12



Immunohistochemical analysis of paraffin-embedded mouse fallopian tube tissue using anti-beta Tubulin-HRP in antibody. Counter stained with hematoxylin.

Background

Tubulin is one of several members of a small family of globular proteins. The most common members of the tubulin family are α -tubulin and β -tubulin. The beta-tubulin (relative molecular weight about 50 kDa) is counterpart of alpha-tubulin in tubulin heterodimer, it is coded by multiple tubulin genes and it is also posttranslationally modified. Heterogeneity of subunit is concentrated in C-terminal structural domain. Beta-Tubulin may have bound GTP or GDP. Under certain conditions β -tubulin can hydrolyze its bound GTP to GDP plus P_i , release the P_i , and exchange the GDP for GTP.

References

Note: This product is for in vitro research use only