

CUB domain-containing protein 1 Antibody

Catalog No: #48377

Package Size: #48377-1 50ul #48377-2 100ul

Orders: order@signalwayantibody.com

Support: tech@signalwayantibody.com

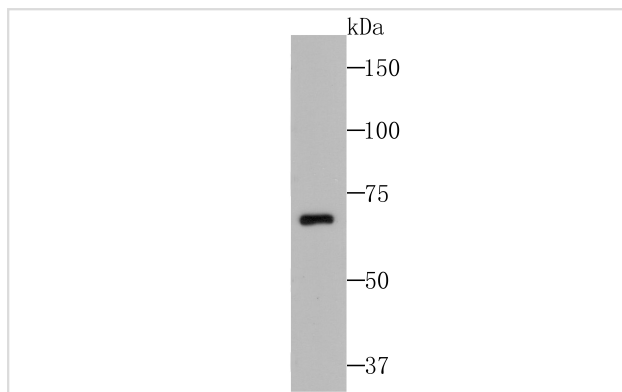
Description

Product Name	CUB domain-containing protein 1 Antibody
Host Species	Mouse
Clonality	Monoclonal
Clone No.	B2-E6
Purification	Protein affinity purified
Applications	WB,IHC,ICC
Species Reactivity	Hu, Ms, Rt
Immunogen Description	Recombinant protein.
Other Names	9030022E12Rik antibody AA409659 antibody CD 318 antibody CD_antigen=CD318 antibody CD318 antibody CD318 antigen antibody CDCP 1 antibody Cdcp1 antibody CDCP1_HUMAN antibody CUB domain containing protein 1 antibody CUB domain-containing protein 1 antibody E030027H19Rik antibody FLJ13772 antibody FLJ22375 antibody FLJ22969 antibody Membrane glycoprotein gp140 antibody MGC31813 antibody OTTHUMP00000164120 antibody OTTHUMP00000209568 antibody RGD1305578 antibody SIMA 135 antibody SIMA135 antibody Subtractive immunization M plus HEp3 associated 135 kDa protein antibody Subtractive immunization M plus HEp3-associated 135 kDa protein antibody Transmembrane and associated with src kinases antibody TRASK antibody
Accession No.	Swiss-Prot#:Q9H5V8
Uniprot	Q9H5V8
GeneID	64866;
Calculated MW	92/72/37 kDa
Formulation	1*TBS (pH7.4), 0.5%BSA, 50%Glycerol. Preservative: 0.05% Sodium Azide.
Storage	Store at -20°C

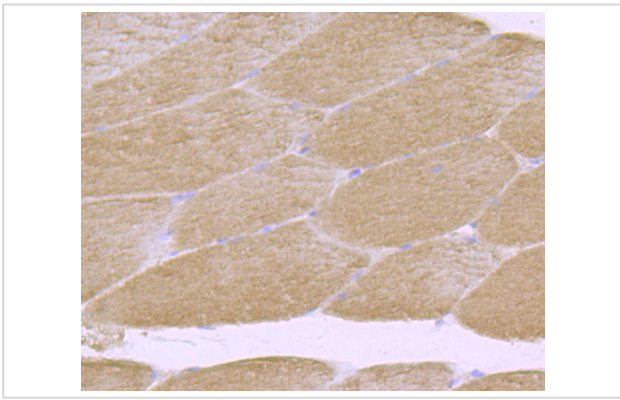
Application Details

WB: 1:500IHC: 1:50-1:100ICC: 1:50

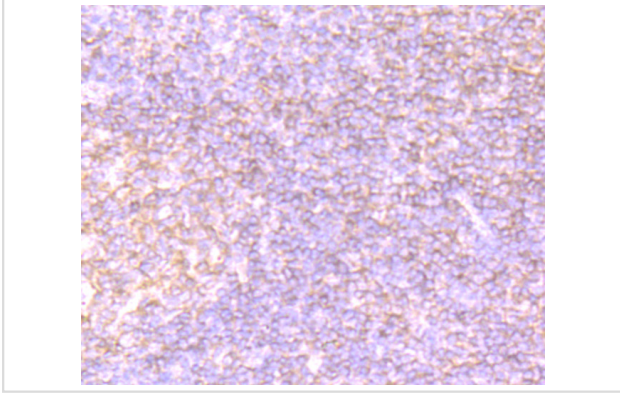
Images



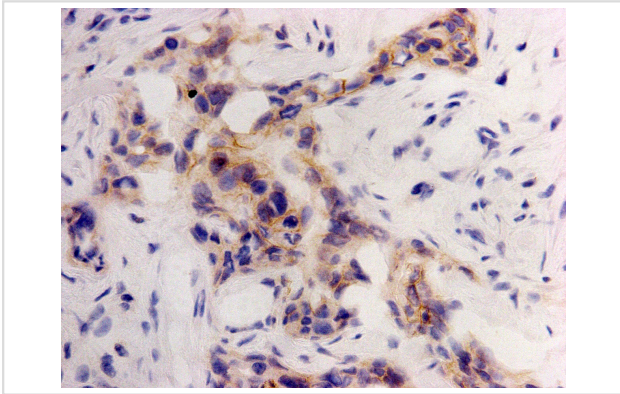
Western blot analysis of CDCP1 on K562 cell lysates using anti-CDCP1 antibody at 1/200 dilution.



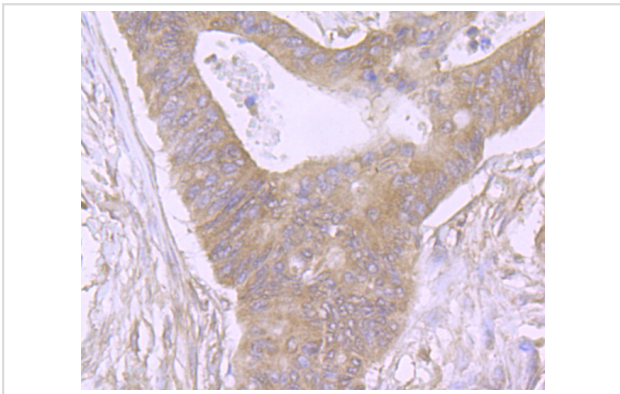
Immunohistochemical analysis of paraffin-embedded rat skeletal muscle tissue using anti-CDCP1 antibody. Counter stained with hematoxylin.



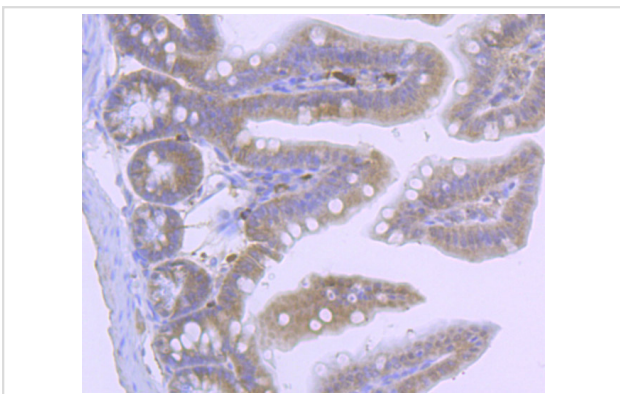
Immunohistochemical analysis of paraffin-embedded human tonsil tissue using anti-CDCP1 antibody. Counter stained with hematoxylin.



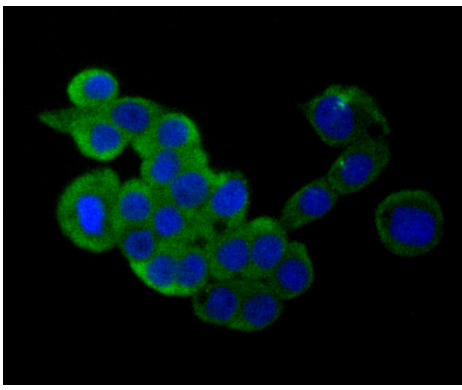
Immunohistochemical analysis of paraffin-embedded human breast cancer tissue using anti-CDCP1 antibody. Counter stained with hematoxylin.



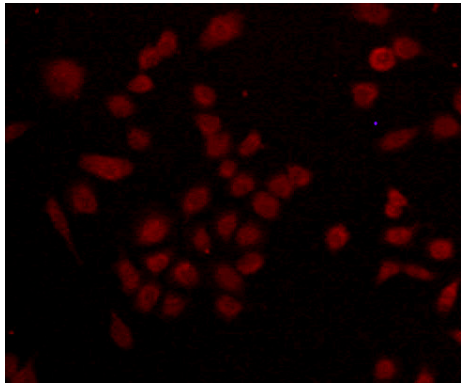
Immunohistochemical analysis of paraffin-embedded human colon cancer tissue using anti-CDCP1 antibody. Counter stained with hematoxylin.



Immunohistochemical analysis of paraffin-embedded mouse colon tissue using anti-CDCP1 antibody. Counter stained with hematoxylin.



ICC staining CDCP1 (green) in LOVO cells. The nuclear counter stain is DAPI (blue). Cells were fixed in paraformaldehyde, permeabilised with 0.25% Triton X100/PBS.



ICC staining CDCP1 (red) in A549 cells. Cells were fixed in paraformaldehyde, permeabilised with 0.25% Triton X100/PBS.

Background

CDCP1 (CUB-domain-containing protein 1) contains three extracellular CUB domains, a transmembrane domain, and two putative cytoplasmic tyrosine phosphorylation sites. Phosphorylation of the gp140 and p80 proteins is mediated by Src family kinases at various tyrosine residues, including Tyr 734. PTP family members mediate the desphosphorylation of CDCP1. The conversion of gp140 to p80 prolongs the phosphorylation state, which may affect signaling in epithelial wounds. CDCP1 acts as a marker for hematopoietic cells and also exhibits high expression in metastatic colon and breast tumors.

References

Note: This product is for in vitro research use only