

SMAP45 Polyclonal Antibody

Catalog No: #41446

Package Size: #41446-1 50ul #41446-2 100ul

Orders: order@signalwayantibody.comSupport: tech@signalwayantibody.com

Description

Product Name	SMAP45 Polyclonal Antibody
Host Species	Rabbit
Clonality	Polyclonal
Purification	The antibody was affinity-purified from rabbit antiserum by affinity-chromatography using epitope-specific immunogen.
Applications	WB IHC IF ELISA
Species Reactivity	Hu Ms Rt Mk
Specificity	SMAP45 Polyclonal Antibody detects endogenous levels of SMAP45 protein.
Immunogen Type	peptide
Immunogen Description	Synthesized peptide derived from the C-terminal region of human SMAP45.
Target Name	SMAP45
Other Names	HDAC3; Histone deacetylase 3; HD3; RPD3-2; SMAP45
Accession No.	Swiss-Prot: O15379NCBI Gene ID: 8841
Uniprot	O15379
GeneID	8841;
SDS-PAGE MW	50kd
Concentration	1mg/ml
Formulation	Liquid in PBS containing 50% glycerol, 0.5% BSA and 0.02% sodium azide.
Storage	Store at -20°C/1 year

Application Details

Western Blot: 1/500 - 1/2000.

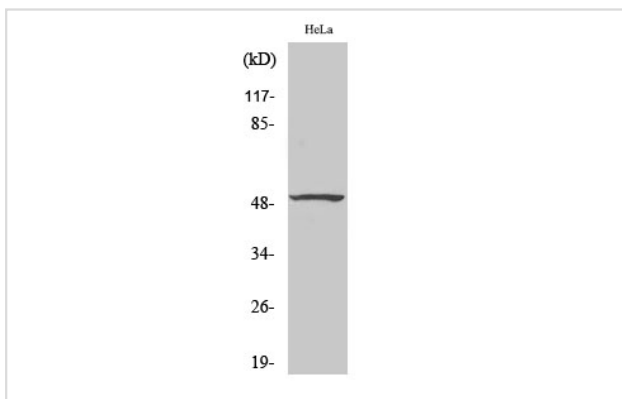
Immunohistochemistry: 1/100 - 1/300.

Immunofluorescence: 1/200 - 1/1000.

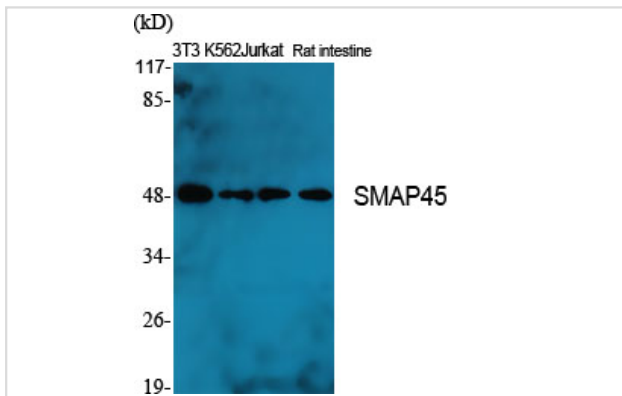
ELISA: 1/20000.

Not yet tested in other applications.

Images



Western Blot analysis of HepG2 cells using SMAP45 Polyclonal Antibody



Western Blot analysis of NIH-3T3 K562 Jurkat RAT-intestine cells using SMAP45 Polyclonal Antibody

Note: This product is for in vitro research use only