

GPCR GPR86 Antibody

Catalog No: #48382

Package Size: #48382-1 50ul #48382-2 100ul

Orders: order@signalwayantibody.comSupport: tech@signalwayantibody.com

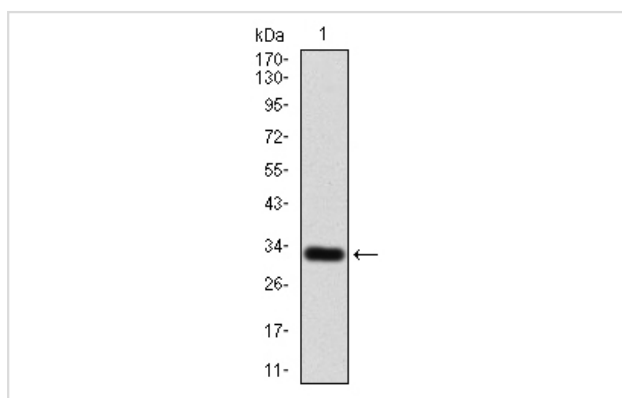
Description

Product Name	GPCR GPR86 Antibody
Host Species	Mouse
Clonality	Monoclonal
Clone No.	12C-8E
Purification	ProA affinity purified
Applications	WB, FC
Species Reactivity	Hu
Immunogen Description	Recombinant protein
Other Names	P2RY13 antibody FKSG77 antibody G protein coupled receptor 86 antibody G protein coupled receptor 94 antibody G-protein coupled receptor 86 antibody G-protein coupled receptor 94 antibody GPCR1 antibody GPR86 antibody GPR94 antibody HGNC:13661 antibody P2RY13 antibody P2Y purinoceptor 13 antibody P2Y13 antibody P2Y13_HUMAN antibody Purinergic receptor P2Y G protein coupled 13 antibody SP174 antibody
Accession No.	Swiss-Prot#:Q9BPV8
Uniprot	Q9BPV8
GeneID	53829;
Calculated MW	41 kDa
Formulation	1*TBS (pH7.4), 1%BSA, 40%Glycerol. Preservative: 0.05% Sodium Azide.
Storage	Store at -20°C

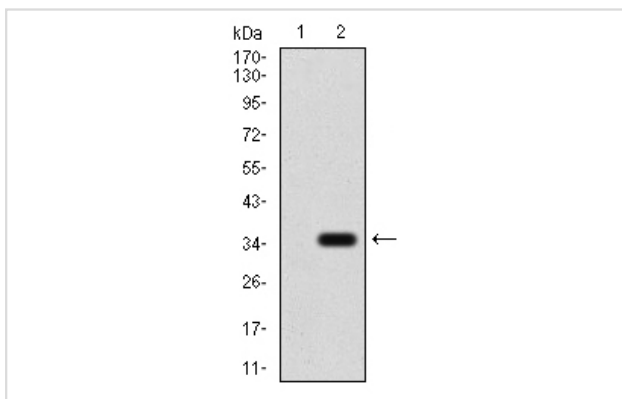
Application Details

WB: 1:500-1:2,000FC: 1:50-1:100

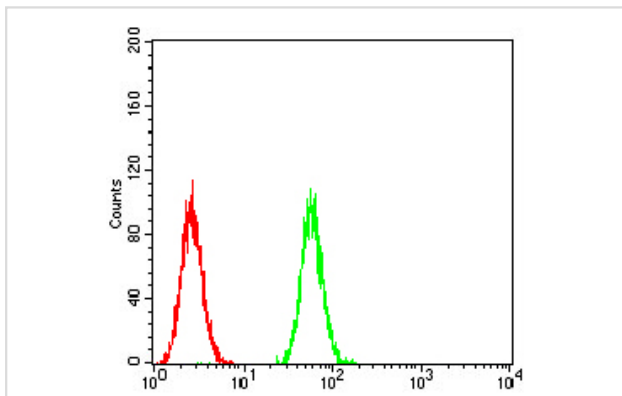
Images



Western blot analysis of GPCR GPR86 on human GPCR GPR86 recombinant protein using anti- GPCR GPR86 antibody at 1/1,000 dilution.



Western blot analysis of GPCR GPR86 on HEK293 (1) and GPCR GPR86-hlgGfc transfected HEK293 (2) cell lysate using anti- GPCR GPR86 antibody at 1/1,000 dilution.



Flow cytometric analysis of HeLa cells with GPCR GPR86 antibody at 1/100 dilution (green) compared with an unlabelled control (cells without incubation with primary antibody; red).

Background

The product of this gene belongs to the family of G-protein coupled receptors. This family has several receptor subtypes with different pharmacological selectivity, which overlaps in some cases, for various adenosine and uridine nucleotides. This receptor is activated by ADP.

References

Note: This product is for in vitro research use only