

## FBXL10 Antibody

Catalog No: #48385

Package Size: #48385-1 50ul #48385-2 100ul

Orders: [order@signalwayantibody.com](mailto:order@signalwayantibody.com)Support: [tech@signalwayantibody.com](mailto:tech@signalwayantibody.com)

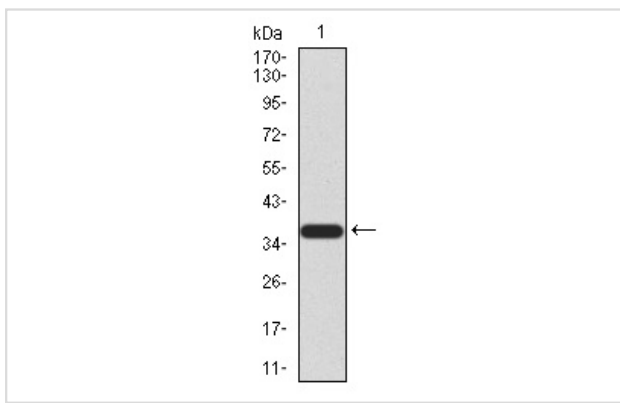
## Description

Product Name	FBXL10 Antibody
Host Species	Mouse
Clonality	Monoclonal
Clone No.	6G-11
Purification	ProA affinity purified
Applications	WB, FC
Species Reactivity	Hu
Immunogen Description	Recombinant protein
Other Names	[Histone-H3]-lysine-36 demethylase 1B antibody CXXC-type zinc finger protein 2 antibody CXXC2 antibody F box and leucine rich repeat protein 10 antibody F box protein FBL10 antibody F-box and leucine-rich repeat protein 10 antibody F-box protein FBL10 antibody F-box/LRR-repeat protein 10 antibody Fbl10 antibody FBXL10 antibody JEMMA (Jumonji domain EMSY interactor methyltransferase motif) protein antibody JHDM1B antibody JmjC domain-containing histone demethylation protein 1B antibody Jumonji C domain containing histone demethylase 1B antibody Jumonji domain-containing EMSY-interactor methyltransferase motif protein antibody kdm2b antibody KDM2B_HUMAN antibody Lysine (K) specific demethylase 2B antibody Lysine-specific demethylase 2B antibody PCCX2 antibody Protein containing CXXC domain 2 antibody Protein JEMMA antibody Protein-containing CXXC domain 2 antibody
Accession No.	Swiss-Prot#:Q8NHM5
Uniprot	Q8NHM5
GeneID	84678;
Calculated MW	152 kDa
Formulation	1*TBS (pH7.4), 1%BSA, 40%Glycerol. Preservative: 0.05% Sodium Azide.
Storage	Store at -20°C

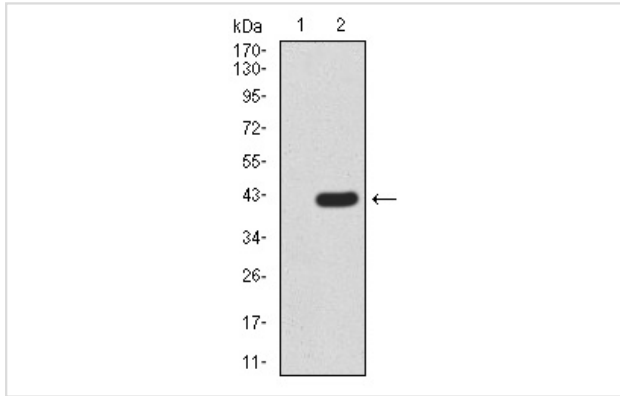
## Application Details

WB: 1:500-1:1000FC: 1:50-1:200

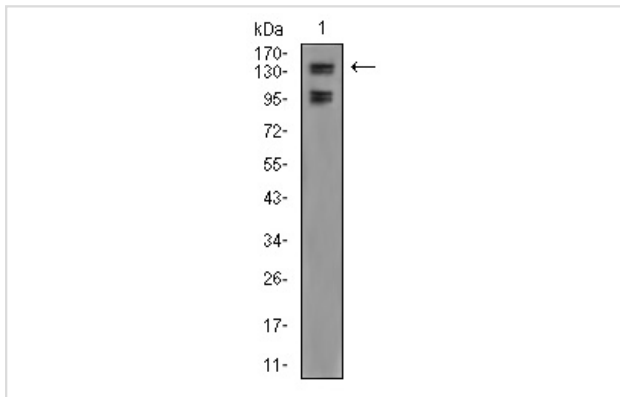
## Images



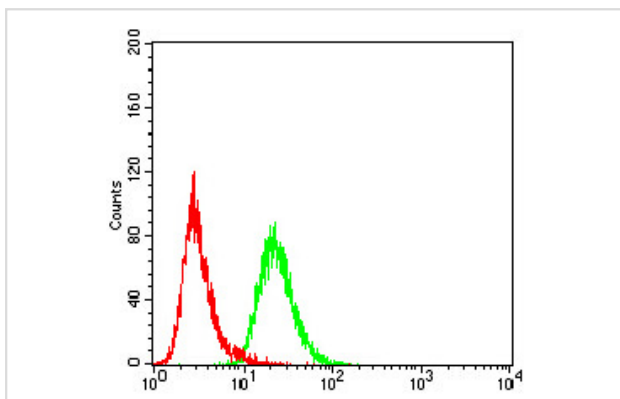
Western blot analysis of FBXL10 on human FBXL10 recombinant protein using anti-FBXL10 antibody at 1/1,000 dilution.



Western blot analysis of FBXL10 on HEK293 (1) and FBXL10-hlgGfc transfected HEK293 (2) cell lysate using anti-FBXL10 antibody at 1/1,000 dilution.



Western blot analysis of FBXL10 on A549 cell lysate using anti-FBXL10 antibody at 1/1,000 dilution.



Flow cytometric analysis of HeLa cells with FBXL10 antibody at 1/100 dilution (green) compared with an unlabelled control (cells without incubation with primary antibody; red).

## Background

FBXL10 (F-box and leucine-rich repeat protein 10), also known as Fbl10, CXXC2 (CXXC-type zinc finger protein 2), PCCX2, KDM2B, JEMMA (jumonji domain, EMSY-interactor, methyltransferase motif protein) or JHDM1B (jumonji C domain-containing histone demethylase 1B), is a nuclear protein that contains one F-box domain, a CXXC-type zinc finger, one JMJC domain, four leucine-rich repeats and one PHD-type zinc finger. FBXL10 belongs to the Fbls class of F-box proteins that contain leucine-rich repeats in addition to their F-box motif. F-box proteins are critical components of the SCF (Skp1-CUL-1-F-box protein) type E3 ubiquitin ligase complex and are involved in substrate recognition and recruitment for ubiquitination. In addition to its role in substrate recognition as a component of the E3 complex, FBXL10 functions as a dimethylation-specific demethylase, binding iron as a cofactor and demethylating lysine-36 of Histone H3. This suggests that FBXL10 plays a central role in the histone code.

## References

---

Note: This product is for in vitro research use only