

# CK5 Antibody

Catalog No: #48387



Package Size: #48387-1 50ul #48387-2 100ul

Orders: [order@signalwayantibody.com](mailto:order@signalwayantibody.com)

Support: [tech@signalwayantibody.com](mailto:tech@signalwayantibody.com)

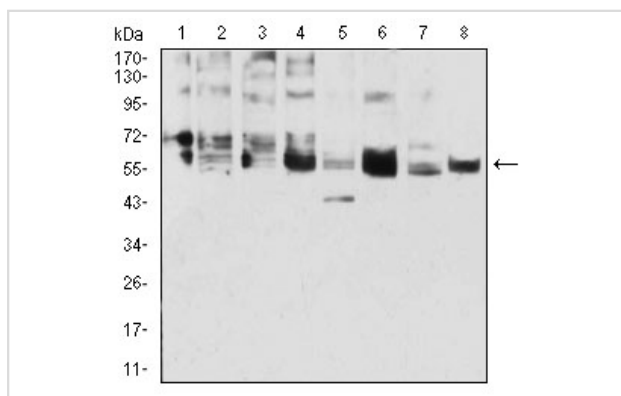
## Description

Product Name	CK5 Antibody
Host Species	Mouse
Clonality	Monoclonal
Clone No.	6D-4D
Purification	ProA affinity purified
Applications	WB, IHC, ICC, FC
Species Reactivity	Hu, Ms, Monkey
Immunogen Description	Recombinant protein
Other Names	58 kDa cytokeratin antibody CK-5 antibody CK5 antibody Cytokeratin-5 antibody Cytokeratin5 antibody DDD antibody DDD1 antibody EBS2 antibody epidermolysis bullosa simplex 2 Dowling-Meara/Kobner/Weber-Cockayne types antibody K2C5_HUMAN antibody K5 antibody keratin 5 (epidermolysis bullosa simplex, Dowling-Meara/Kobner/Weber-Cockayne types) antibody Keratin 5 antibody Keratin antibody keratin complex 2, basic, gene 5 antibody keratin, type II cytoskeletal 5 antibody Keratin-5 antibody Keratin5 antibody KRT 5 antibody Krt5 antibody KRT5A antibody type II cytoskeletal 5 antibody Type-II keratin Kb5 antibody
Accession No.	Swiss-Prot#:P13647
Uniprot	P13647
GeneID	3852;
Calculated MW	62 kDa
Formulation	1*TBS (pH7.4), 1%BSA, 40%Glycerol. Preservative: 0.05% Sodium Azide.
Storage	Store at -20°C

## Application Details

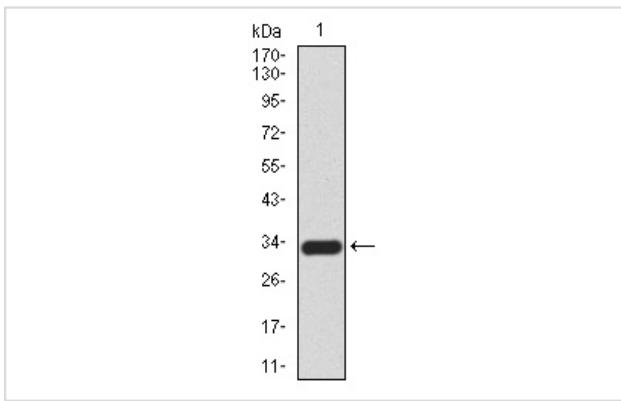
WB: 1:1,000-1:2,000 IHC: 1:50-1:200 ICC: 1:50-1:200FC: 1:50-1:100

## Images

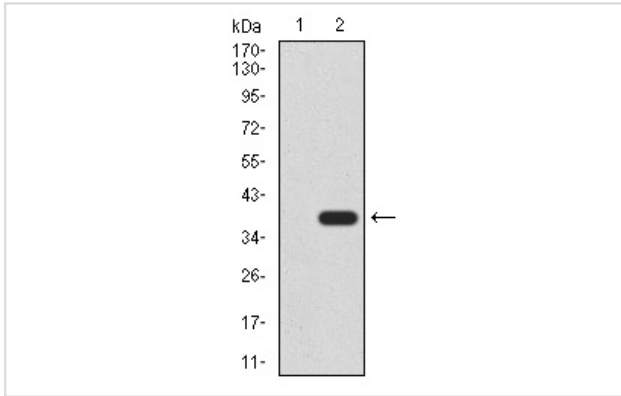


Western blot analysis of CK5 on different cells lysates using anti-CK5 antibody at 1/1,000 dilution. Positive control  $\Omega\frac{1}{2}\Omega\frac{1}{2}$

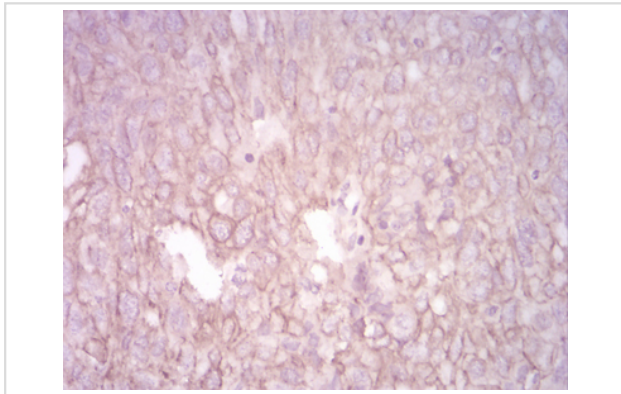
- Line1: A431
- Line2: 3T3-L1
- Line3: COS7
- Line4: MCF-7
- Line5: SK-Br-3
- Line6: HeLa
- Line7: Lncap
- Line8: HepG2



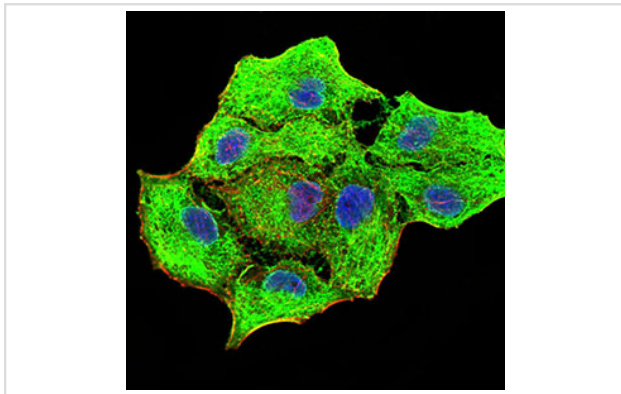
Western blot analysis of CK5 on human CK5 recombinant protein using anti-CK5 antibody at 1/1,000 dilution.



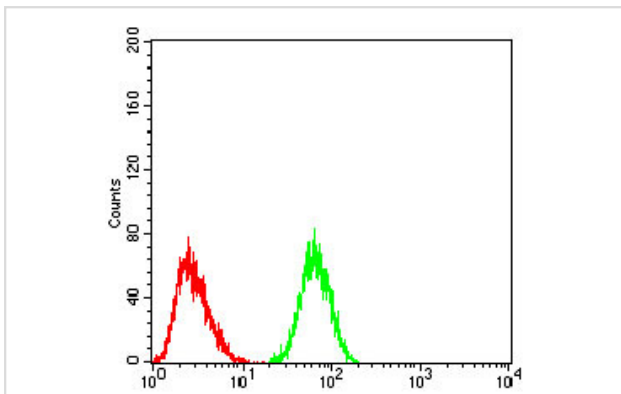
Western blot analysis of CK5 on HEK293 (1) and CK5-hlgGfc transfected HEK293 (2) cell lysate using anti-CK5 antibody at 1/1,000 dilution.



Immunohistochemical analysis of paraffin-embedded human ovarian cancer tissue using anti-CK5 antibody. Counter stained with hematoxylin.



ICC staining CK5 (green) and Actin filaments (red) in MCF-7 cells. The nuclear counter stain is DAPI (blue). Cells were fixed in paraformaldehyde, permeabilised with 0.25% Triton X100/PBS.



Flow cytometric analysis of HeLa cells with CK5 antibody at 1/100 dilution (green) compared with an unlabelled control (cells without incubation with primary antibody; red).

## Background

---

Cytokeratins comprise a diverse group of intermediate filament proteins (IFPs) that are expressed as pairs in both keratinized and non-keratinized epithelial tissue. Cytokeratins play a critical role in differentiation and tissue specialization and function to maintain the overall structural integrity of epithelial cells. Cytokeratins have been found to be useful markers of tissue differentiation which is directly applicable to the characterization of malignant tumors. Cytokeratin 5 is expressed in normal basal cells. Mutations of the cytokeratin 5 gene (KRT5) have been shown to result in the autosomal dominant disorder epidermolysis bullosa (EB).

## References

---

---

Note: This product is for in vitro research use only