

## SMIT Polyclonal Antibody

Catalog No: #41447

Package Size: #41447-1 50ul #41447-2 100ul

Orders: order@signalwayantibody.com

Support: tech@signalwayantibody.com

## Description

Product Name	SMIT Polyclonal Antibody
Host Species	Rabbit
Clonality	Polyclonal
Purification	The antibody was affinity-purified from rabbit antiserum by affinity-chromatography using epitope-specific immunogen.
Applications	WB ELISA
Species Reactivity	Hu Ms Rt
Specificity	SMIT Polyclonal Antibody detects endogenous levels of SMIT protein.
Immunogen Type	peptide
Immunogen Description	Synthesized peptide derived from the Internal region of human SMIT.
Target Name	SMIT
Other Names	SLC5A3; Sodium/myo-inositol cotransporter; Na(+)/myo-inositol cotransporter; Sodium/myo-inositol transporter 1; SMIT1; Solute carrier family 5 member 3
Accession No.	Swiss-Prot: P53794NCBI Gene ID: 6526
Uniprot	P53794
GeneID	6526;
SDS-PAGE MW	80kd
Concentration	1mg/ml
Formulation	Liquid in PBS containing 50% glycerol, 0.5% BSA and 0.02% sodium azide.
Storage	Store at -20°C/1 year

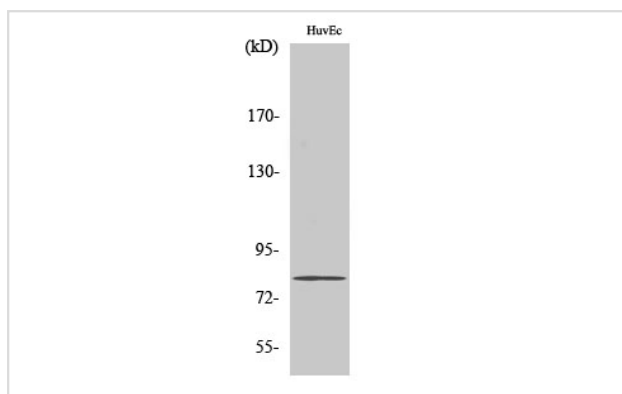
## Application Details

Western Blot: 1/500 - 1/2000.

ELISA: 1/10000.

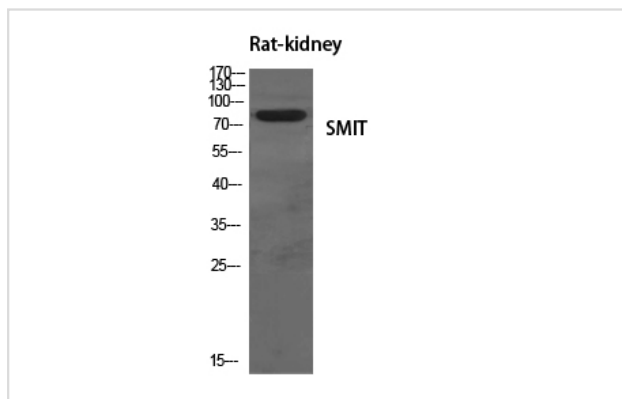
Not yet tested in other applications.

## Images



Western Blot analysis of HuvEc cells using SMIT Polyclonal Antibody

Western Blot analysis of RAT-KIDNEY cells using SMIT Polyclonal Antibody



Note: This product is for in vitro research use only