

MMEL1 Antibody

Catalog No: #48399

Package Size: #48399-1 50ul #48399-2 100ul

Orders: order@signalwayantibody.comSupport: tech@signalwayantibody.com

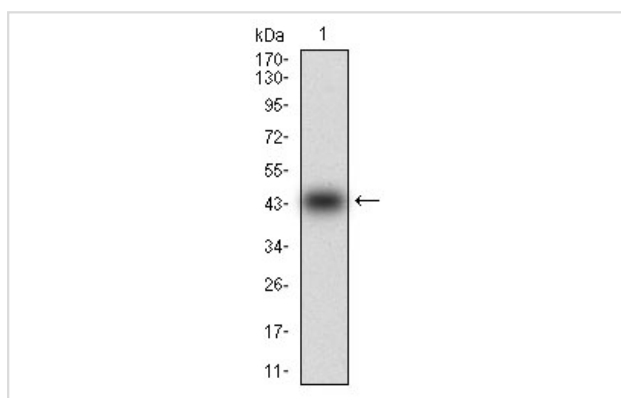
Description

Product Name	MMEL1 Antibody
Host Species	Mouse
Clonality	Monoclonal
Clone No.	D5-H2
Purification	ProA affinity purified
Applications	WB, IHC, FC
Species Reactivity	Hu
Immunogen Description	Recombinant protein
Other Names	Mel transforming oncogene like 1 antibody Membrane metallo endopeptidase like 1 antibody Membrane metallo endopeptidase like 2 antibody MMEL1 antibody Neprilysin 2 antibody Neprilysin Like 1 antibody NL1 antibody NL2 antibody SEP antibody Soluble secreted endopeptidase antibody
Accession No.	Swiss-Prot#:Q495T6
Uniprot	Q495T6
GeneID	79258;
Calculated MW	90 kDa
Formulation	1*TBS (pH7.4), 1%BSA, 40%Glycerol. Preservative: 0.05% Sodium Azide.
Storage	Store at -20°C

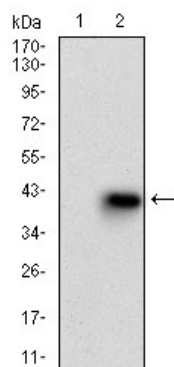
Application Details

WB: 1:500-1:2,000 IHC: 1:50-1:200 FC: 1:50-1:100

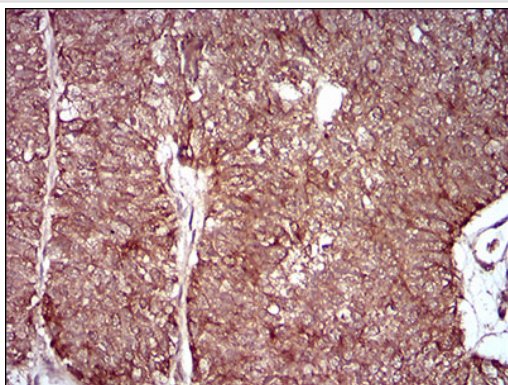
Images



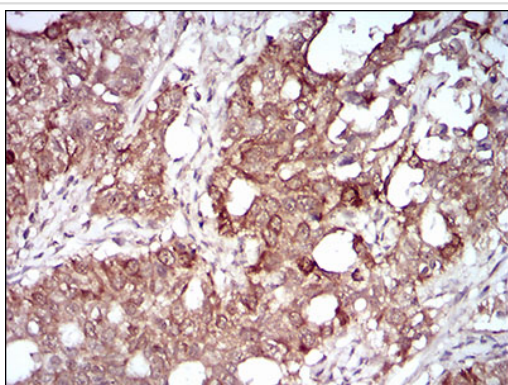
Western blot analysis of MMEL1 on human MMEL1 recombinant protein using anti-MMEL1 antibody at 1/1,000 dilution.



Western blot analysis of MMEL1 on HEK293 (1) and MMEL1-hlgGfc transfected HEK293 (2) cell lysate using anti-MMEL1 antibody at 1/1,000 dilution.



Immunohistochemical analysis of paraffin-embedded human ovarian cancer tissue using anti-MMEL1 antibody. Counter stained with hematoxylin.



Immunohistochemical analysis of paraffin-embedded human cervical cancer tissue using anti-MMEL1 antibody. Counter stained with hematoxylin.

Background

Metalloprotease involved in sperm function, possibly by modulating the processes of fertilization and early embryonic development. Degrades a broad variety of small peptides with a preference for peptides shorter than 3 kDa containing neutral bulky aliphatic or aromatic amino acid residues. Shares the same substrate specificity with MME and cleaves peptides at the same amide bond (By similarity).

References

Note: This product is for in vitro research use only