

SMCP Antibody

Catalog No: #48400

Package Size: #48400-1 50ul #48400-2 100ul

Orders: order@signalwayantibody.com

Support: tech@signalwayantibody.com

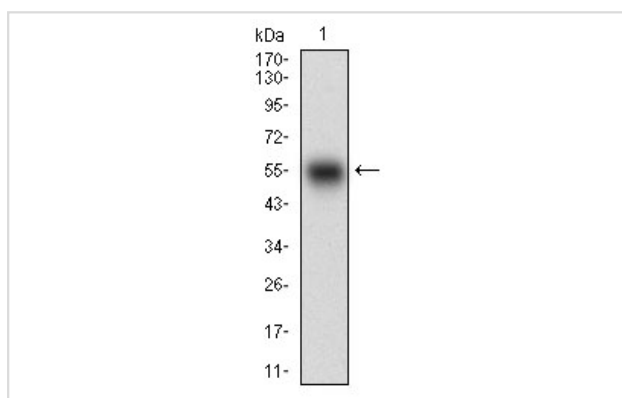
Description

Product Name	SMCP Antibody
Host Species	Mouse
Clonality	Monoclonal
Clone No.	D8-C10
Purification	ProA affinity purified
Applications	WB, ICC
Species Reactivity	Hu
Immunogen Description	Recombinant protein
Other Names	HSMCSGEN1 antibody MCS antibody MCSP antibody MCSP_HUMAN antibody Mitochondrial capsule selenoprotein antibody SMCP antibody Sperm mitochondria associated cysteine rich protein antibody Sperm mitochondrial-associated cysteine-rich protein antibody
Accession No.	Swiss-Prot#:P49901
Uniprot	P49901
GeneID	4184;
Calculated MW	13 kDa
Formulation	1*TBS (pH7.4), 1%BSA, 40%Glycerol. Preservative: 0.05% Sodium Azide.
Storage	Store at -20°C

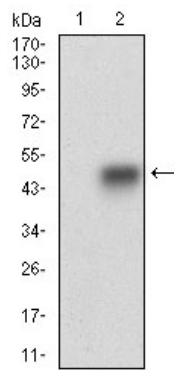
Application Details

WB: 1:500-1:2,000 ICC: 1:50-1:200

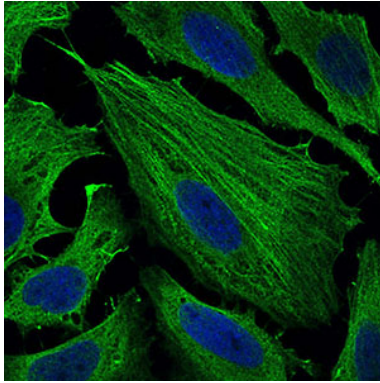
Images



Western blot analysis of SMCP on human SMCP recombinant protein using anti-SMCP antibody at 1/1,000 dilution.



Western blot analysis of SMCP on HEK293 (1) and SMCP-hlgGFc transfected HEK293 (2) cell lysate using anti-SMCP antibody at 1/1,000 dilution.



ICC staining SMCP (green) in HeLa cells. The nuclear counter stain is DAPI (blue). Cells were fixed in paraformaldehyde, permeabilised with 0.25% Triton X100/PBS.

Background

Sperm mitochondria differ in morphology and subcellular localization from those of somatic cells. They are elongated, flattened, and arranged circumferentially to form a helical coiled sheath in the midpiece of the sperm flagellum. The protein encoded by this gene localizes to the capsule associated with the mitochondrial outer membranes and is thought to function in the organization and stabilization of the helical structure of the sperm's mitochondrial sheath.

References

Note: This product is for in vitro research use only