

## KHDRBS2 Antibody

Catalog No: #48401

Package Size: #48401-1 50ul #48401-2 100ul

Orders: order@signalwayantibody.com

Support: tech@signalwayantibody.com

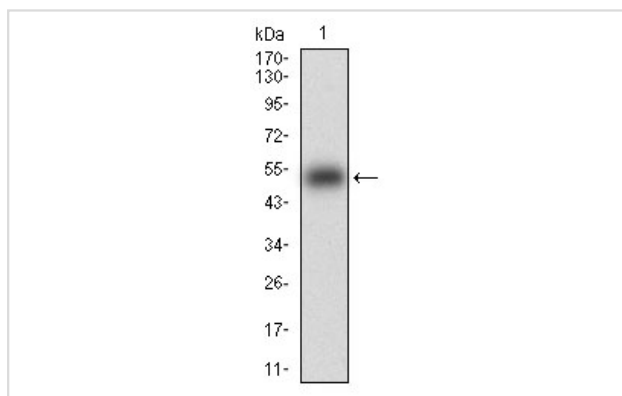
## Description

Product Name	KHDRBS2 Antibody
Host Species	Mouse
Clonality	Monoclonal
Clone No.	C10-G8
Purification	ProA affinity purified
Applications	WB, IHC, FC
Species Reactivity	Hu, Ms
Immunogen Description	Recombinant protein
Other Names	KH domain containing, RNA binding, signal transduction associated protein 2 antibody 6330586C16Rik antibody bA535F17.1 antibody FLJ38664 antibody hSLM 1 antibody hSLM-1 antibody KH domain containing, RNA binding, signal transduction associated 2 antibody KH domain-containing antibody KHDR2_HUMAN antibody khdrbs2 antibody MGC26664 antibody RNA-binding antibody Sam68 like mammalian protein 1 antibody Sam68-like mammalian protein 1 antibody signal transduction-associated protein 2 antibody SLM 1 antibody SLM-1 antibody SLM1 antibody
Accession No.	Swiss-Prot#:Q5VWX1
Uniprot	Q5VWX1
GeneID	202559;
Calculated MW	39 kDa
Formulation	1*TBS (pH7.4), 1%BSA, 40%Glycerol. Preservative: 0.05% Sodium Azide.
Storage	Store at -20°C

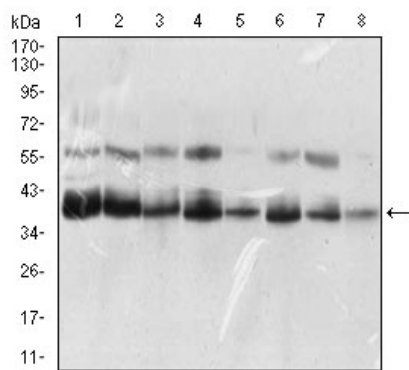
## Application Details

WB: 1:500-1:2,000 IHC: 1:50-1:200 FC: 1:50-1:100

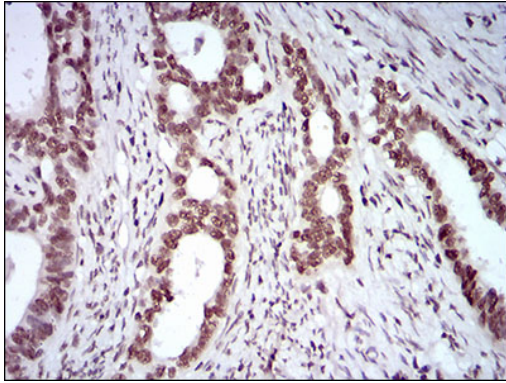
## Images



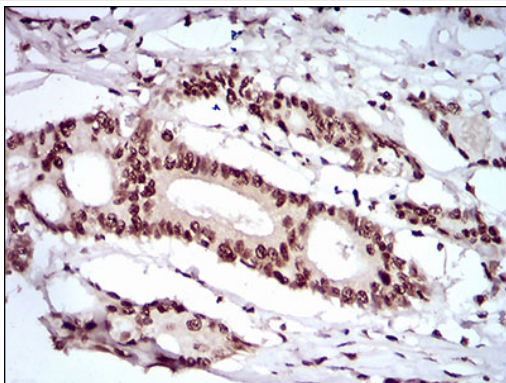
Western blot analysis of KHDRBS2 on human KHDRBS2 recombinant protein using anti-KHDRBS2 antibody at 1/1,000 dilution.



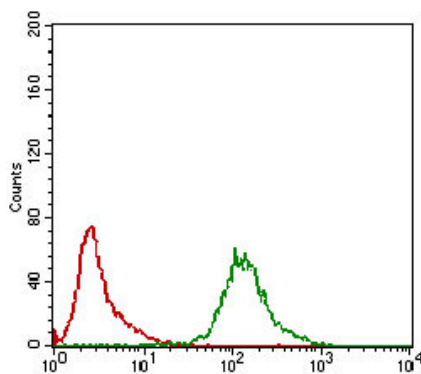
Western blot analysis of KHDRBS2 on different cell lysate using anti-KHDRBS2 antibody at 1/1,000 dilution. Positive control  $\Omega$   $\frac{1}{2}$   $\Omega$   $\frac{1}{2}$  Line1: K562 Line2: HEK293 Line3: NTERA-2 Line4: HeLa Line5: HepG2 Line6: Jurkat Line7: A431 Line8: NIH/3T3



Immunohistochemical analysis of paraffin-embedded human cervical cancer tissue using anti-KHDRBS2 antibody. Counter stained with hematoxylin.



Immunohistochemical analysis of paraffin-embedded human colon cancer tissue using anti-KHDRBS2 antibody. Counter stained with hematoxylin.



Flow cytometric analysis of K562 cells with KHDRBS2 antibody at 1/100 dilution (green) compared with an unlabelled control (cells without incubation with primary antibody; red).

## Background

RNA-binding protein that plays a role in the regulation of alternative splicing and influences mRNA splice site selection and exon inclusion. Binds both poly(A) and poly(U) homopolymers. Phosphorylation by PTK6 inhibits its RNA-binding ability (By similarity). Induces an increased concentration-dependent incorporation of exon in CD44 pre-mRNA by direct binding to purine-rich exonic enhancer. Can regulate alternative splicing of NRXN1 in the laminin G-like domain 6 containing the evolutionary conserved neurexin alternative spliced segment 4 (AS4) involved in neurexin selective targeting to postsynaptic partners. Regulates cell-type specific alternative splicing of NRXN1 at AS4 and acts synergistically with SAM68 in exon skipping. In contrast acts antagonistically with SAM68 in NRXN3 exon skipping at AS4. Its phosphorylation by FYN inhibits its ability to regulate splice site selection. May function as an adapter protein for Src kinases during mitosis.

## References

---

Note: This product is for in vitro research use only