

## SLINGSHOT-1L Antibody

Catalog No: #48407

Package Size: #48407-1 50ul #48407-2 100ul

Orders: [order@signalwayantibody.com](mailto:order@signalwayantibody.com)Support: [tech@signalwayantibody.com](mailto:tech@signalwayantibody.com)

## Description

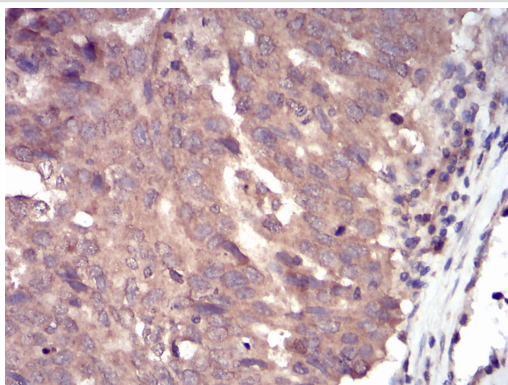
Product Name	SLINGSHOT-1L Antibody
Host Species	Mouse
Clonality	Monoclonal
Clone No.	G9-C11
Purification	ProA affinity purified
Applications	IHC, FC
Species Reactivity	Hu
Immunogen Description	Recombinant protein
Other Names	AW551225 antibody Coro1c antibody coronin, actin binding protein 1C antibody Gm1394 antibody Gm1395 antibody hSSH-1L antibody mSSH 1L antibody OTTMUSP00000031415 antibody Protein phosphatase Slingshot homolog 1 antibody Slingshot 1 antibody slingshot 1L antibody slingshot homolog 1 antibody slingshot like 1 antibody Slingshot1 antibody SSH 1 antibody SSH 1L antibody SSH-1L antibody SSH-like protein 1 antibody Ssh1 antibody SSH1_HUMAN antibody
Accession No.	Swiss-Prot#:Q8WYL5
Uniprot	Q8WYL5
GeneID	54434;
Calculated MW	116 kDa
Formulation	1*TBS (pH7.4), 1%BSA, 40%Glycerol. Preservative: 0.05% Sodium Azide.
Storage	Store at -20°C

## Application Details

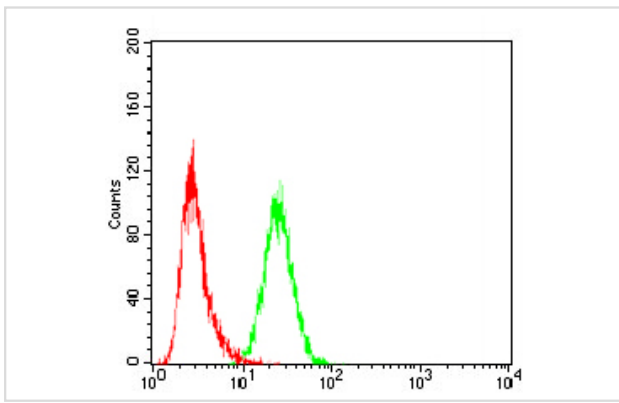
IHC: 1:50-1:200

FC: 1:50-1:100

## Images



Immunohistochemical analysis of paraffin-embedded human ovarian cancer tissue using anti- Slingshot homolog 1 antibody. Counter stained with hematoxylin.



Flow cytometric analysis of HeLa cells with Slingshot homolog 1 antibody at 1/100 dilution (green) compared with an unlabelled control (cells without incubation with primary antibody; red).

## Background

Slingshot homolog (SSH) family of phosphatases, which regulate actin filament dynamics. The SSH proteins dephosphorylate and activate the actin binding/depolymerizing factor cofilin, which subsequently binds to actin filaments and stimulates their disassembly. Cofilin is inactivated by kinases such as LIM domain kinase-1 (LIMK1), which may also be dephosphorylated and inactivated by SSH proteins. The SSH family thus appears to play a role in actin dynamics by reactivating cofilin proteins. Alternatively spliced transcript variants encoding different isoforms have been described for this gene.

## References

Note: This product is for in vitro research use only