

CDCP1 Antibody

Catalog No: #48414

Package Size: #48414-1 50ul #48414-2 100ul

Orders: order@signalwayantibody.com

Support: tech@signalwayantibody.com

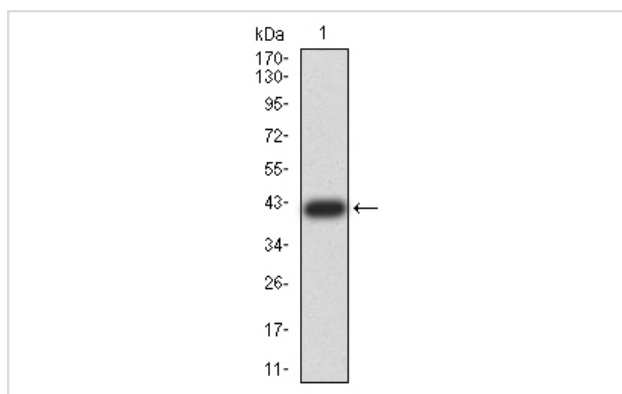
Description

Product Name	CDCP1 Antibody
Host Species	Mouse
Clonality	Monoclonal
Clone No.	G3-H11
Purification	ProA affinity purified
Applications	WB, IHC
Species Reactivity	Hu
Immunogen Description	Recombinant protein
Other Names	9030022E12Rik antibody AA409659 antibody CD 318 antibody CD_antigen=CD318 antibody CD318 antibody CD318 antigen antibody CDCP 1 antibody Cdcp1 antibody CDCP1_HUMAN antibody CUB domain containing protein 1 antibody CUB domain-containing protein 1 antibody E030027H19Rik antibody FLJ13772 antibody FLJ22375 antibody FLJ22969 antibody Membrane glycoprotein gp140 antibody MGC31813 antibody OTTHUMP00000164120 antibody OTTHUMP00000209568 antibody RGD1305578 antibody SIMA 135 antibody SIMA135 antibody Subtractive immunization M plus HEp3 associated 135 kDa protein antibody Subtractive immunization M plus HEp3-associated 135 kDa protein antibody Transmembrane and associated with src kinases antibody TRASK antibody
Accession No.	Swiss-Prot#:Q9H5V8
Uniprot	Q9H5V8
GeneID	64866;
Calculated MW	93 kDa
Formulation	1*TBS (pH7.4), 1%BSA, 40%Glycerol. Preservative: 0.05% Sodium Azide.
Storage	Store at -20°C

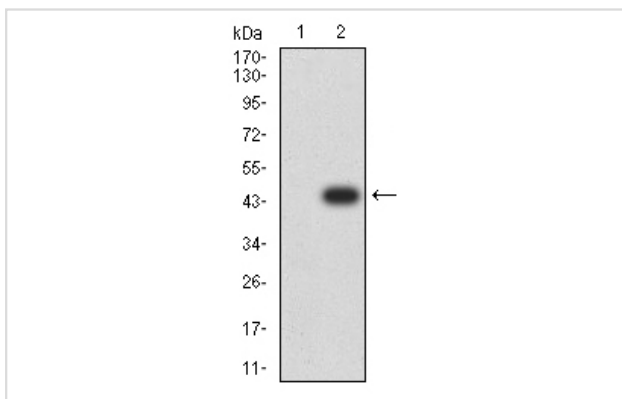
Application Details

WB: 1:500-1:2,000 IHC: 1:200-1:500

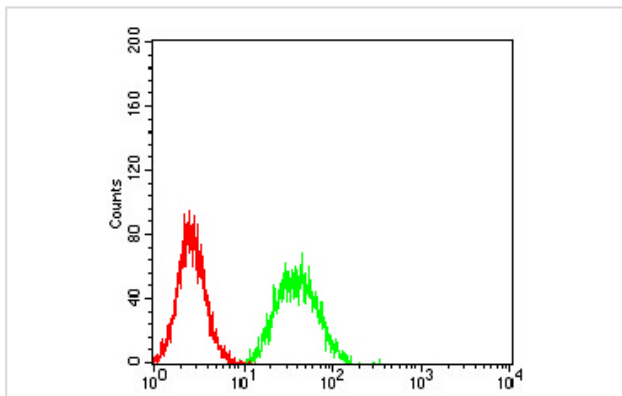
Images



Western blot analysis of CDCP1 on human CDCP1 recombinant protein using anti-CDCP1 antibody at 1/1,000 dilution.



Western blot analysis of CDCP1 on HEK293 (1) and CDCP1-hlgFc transfected HEK293 (2) cell lysate using anti-CDCP1 antibody at 1/1,000 dilution.



Flow cytometric analysis of HeLa cells with CDCP1 antibody at 1/100 dilution (green) compared with an unlabelled control (cells without incubation with primary antibody; red).

Background

CDCP1 (CUB-domain-containing protein 1) contains three extracellular CUB domains, a transmembrane domain, and two putative cytoplasmic tyrosine phosphorylation sites. Phosphorylation of the gp140 and p80 proteins is mediated by Src family kinases at various tyrosine residues, including Tyr 734. PTP family members mediate the desphosphorylation of CDCP1. The conversion of gp140 to p80 prolongs the phosphorylation state, which may affect signaling in epithelial wounds. CDCP1 acts as a marker for hematopoietic cells and also exhibits high expression in metastatic colon and breast tumors.

References

Note: This product is for in vitro research use only