

RND3 Antibody

Catalog No: #48418

Package Size: #48418-1 50ul #48418-2 100ul

Orders: order@signalwayantibody.com

Support: tech@signalwayantibody.com

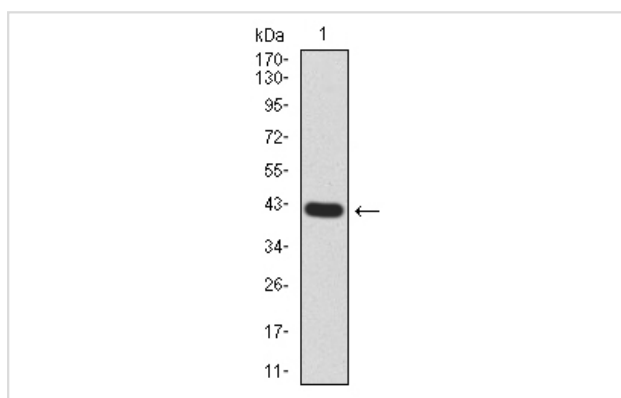
Description

Product Name	RND3 Antibody
Host Species	Mouse
Clonality	Monoclonal
Purification	ProA affinity purified
Applications	WB, ICC, IHC, FC
Species Reactivity	Hu
Immunogen Description	Recombinant protein
Other Names	ARHE antibody memB antibody Protein MemB antibody Ras homolog gene family member E antibody Rho family GTPase 3 antibody Rho-related GTP-binding protein Rho8 antibody Rho-related GTP-binding protein RhoE antibody Rho8 antibody RhoE antibody Rnd3 antibody RND3_HUMAN antibody Small GTP binding protein Rho8 antibody
Accession No.	Swiss-Prot#:P61587
Uniprot	P61587
GeneID	390;
Calculated MW	27 kDa
Formulation	1*TBS (pH7.4), 1%BSA, 40%Glycerol. Preservative: 0.05% Sodium Azide.
Storage	Store at -20°C

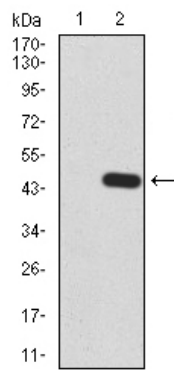
Application Details

WB: 1:500-1:2,000 IHC: 1:50-1:200 ICC: 1:50-1:200 FC: 1:100-1:200

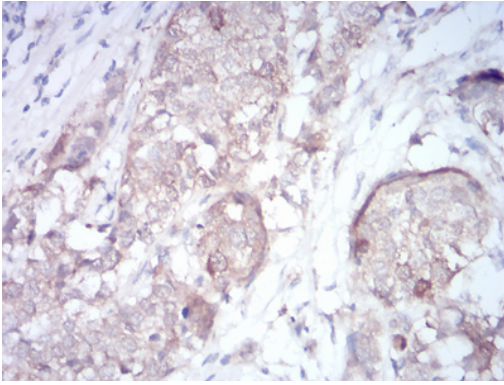
Images



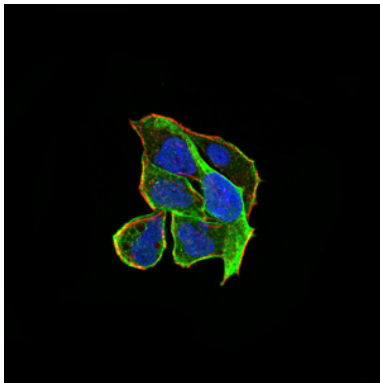
Western blot analysis of RND3 on human RND3 recombinant protein using anti-RND3 antibody at 1/1,000 dilution.



Western blot analysis of RND3 on HEK293 (1) and RND3-hlgGfc transfected HEK293 (2) cell lysate using anti-RND3 antibody at 1/1,000 dilution.



Immunohistochemical analysis of paraffin-embedded human bladder cancer tissue using anti-RND3 antibody. Counter stained with hematoxylin.



ICC staining RND3 (green) and Actin filaments (red) in HeLa cells. The nuclear counter stain is DAPI (blue). Cells were fixed in paraformaldehyde, permeabilised with 0.25% Triton X100/PBS.

Background

The Ras p21 family of guanine nucleotide proteins has been widely studied in view of its apparent role in signal transduction pathways and high frequency of mutations in human malignancies. It is now clear, however, that the Ras proteins (H-, K- and N-Ras p21) are members of a much larger superfamily of related proteins. Six members of this family, Rap 1A, Rap 1B, Rap 2, R-Ras, Ral A and Ral B, exhibit approximately 50% amino acid homology to Ras. The six mammalian Rho proteins (Rho A, B, C, G, 7 and 8) are approximately 30% homologous to Ras and are expressed in a wide range of cell types. Both Ras p21 and Rho p21, as well as other members of the Ras superfamily, contain a carboxy-terminal CAAX sequence (C, cysteine; A, aliphatic amino acid; X, any amino acid) which in the case of Ras has been shown to be essential for correct localization and function.

References

Note: This product is for in vitro research use only