

THAP1 Antibody

Catalog No: #48420

Package Size: #48420-1 50ul #48420-2 100ul

Orders: order@signalwayantibody.com

Support: tech@signalwayantibody.com

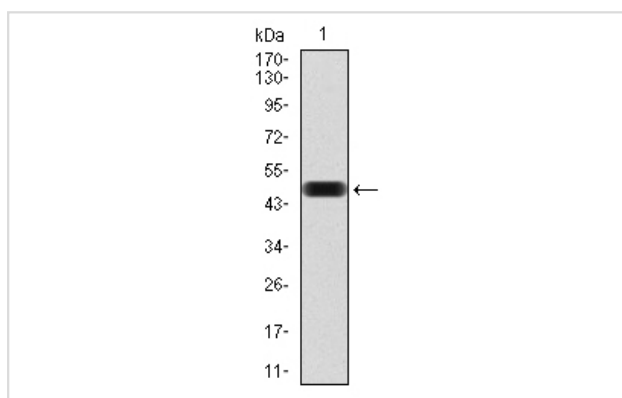
Description

Product Name	THAP1 Antibody
Host Species	Mouse
Clonality	Monoclonal
Purification	ProA affinity purified
Applications	WB, ICC, FC
Species Reactivity	Hu
Immunogen Description	Recombinant protein
Other Names	4833431A01Rik antibody DYT6 antibody FLJ10477 antibody MGC33014 antibody Nuclear proapoptotic factor antibody THAP 1 antibody THAP domain containing 1 antibody THAP domain containing apoptosis associated protein 1 antibody THAP domain containing protein 1 antibody THAP domain protein 1 antibody THAP domain-containing protein 1 antibody Thap1 antibody THAP1_HUMAN antibody
Accession No.	Swiss-Prot#:Q9NVV9
Uniprot	Q9NVV9
GeneID	55145;
Calculated MW	25 kDa
Formulation	1*TBS (pH7.4), 1%BSA, 40%Glycerol. Preservative: 0.05% Sodium Azide.
Storage	Store at -20°C

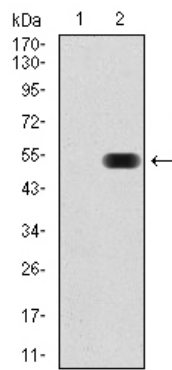
Application Details

WB: 1:500-1:2,000 ICC: 1:50-1:200 FC: 1:50-1:200

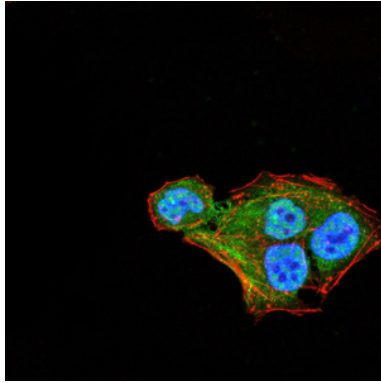
Images



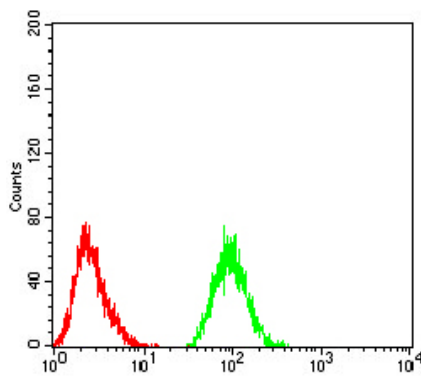
Western blot analysis of THAP1 on human THAP1 recombinant protein using anti-THAP1 antibody at 1/1,000 dilution.



Western blot analysis of THAP1 on HEK293 (1) and THAP1-hlgGfc transfected HEK293 (2) cell lysate using anti-THAP1 antibody at 1/1,000 dilution.



ICC staining THAP1 (green) and Actin filaments (red) in HeLa cells. The nuclear counter stain is DAPI (blue). Cells were fixed in paraformaldehyde, permeabilised with 0.25% Triton X100/PBS.



Flow cytometric analysis of Jurkat cells with THAP1 antibody at 1/100 dilution (green) compared with an unlabelled control (cells without incubation with primary antibody; red).

Background

THAP1 (THAP domain containing, apoptosis associated protein 1) is a 213 amino acid protein that localizes to the nucleoplasm and contains one THAP-type zinc finger, a conserved DNA-binding domain. Interacting with PAR4, THAP1 functions as a pro-apoptotic protein that acts in a zinc-dependent manner and enhances the likelihood of both TNF- and serum withdrawal-induced apoptosis, possibly playing a role in promyelocytic leukemia. The gene encoding THAP1 maps to human chromosome 8, which consists of nearly 146 million base pairs, houses more than 800 genes and is associated with a variety of diseases and malignancies. Schizophrenia, bipolar disorder, Trisomy 8, Pfeiffer syndrome, congenital hypothyroidism, Waardenburg syndrome and some leukemias and lymphomas are thought to occur as a result of defects in specific genes that map to chromosome 8.

References

Note: This product is for in vitro research use only