

AOF1 Antibody

Catalog No: #48421



Package Size: #48421-1 50ul #48421-2 100ul

Orders: order@signalwayantibody.com
Support: tech@signalwayantibody.com

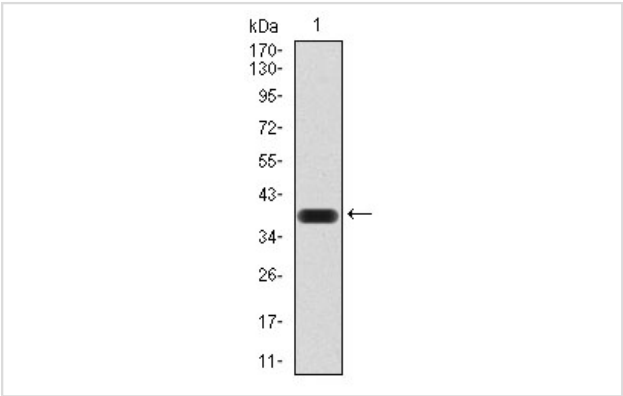
Description

Product Name	AOF1 Antibody
Host Species	Mouse
Clonality	Monoclonal
Purification	ProA affinity purified
Applications	WB, ICC, IHC, FC
Species Reactivity	Hu
Immunogen Description	Recombinant protein
Other Names	amine oxidase (flavin containing) domain 1 antibody amine oxidase, flavin containing 1 antibody AOF1 antibody bA204B7.3 antibody C6orf193 antibody dJ298J15.2 antibody Flavin-containing amine oxidase domain-containing protein 1 antibody FLJ33898 antibody FLJ34109 antibody FLJ43328 antibody KDM1B antibody KDM1B_HUMAN antibody LSD2 antibody lysine (K)-specific demethylase 1B antibody Lysine-specific demethylase 2 antibody Lysine-specific histone demethylase 1B antibody Lysine-specific histone demethylase 2 antibody
Accession No.	Swiss-Prot#:Q8NB78
Uniprot	Q8NB78
GeneID	221656;
Calculated MW	92 kDa
Formulation	1*TBS (pH7.4), 1%BSA, 40%Glycerol. Preservative: 0.05% Sodium Azide.
Storage	Store at -20°C

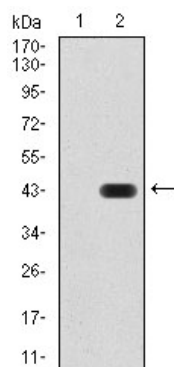
Application Details

WB: 1:500-1:2,000IHC: 1:50-1:200 ICC: 1:50-1:200FC: 1:100-1:200

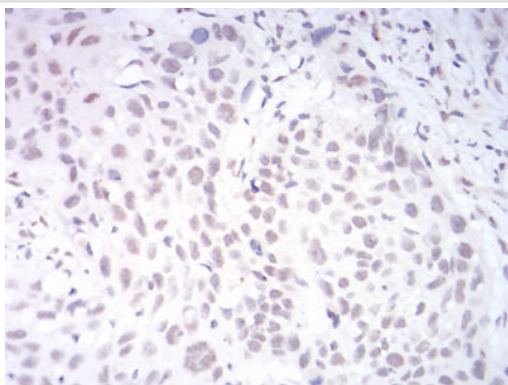
Images



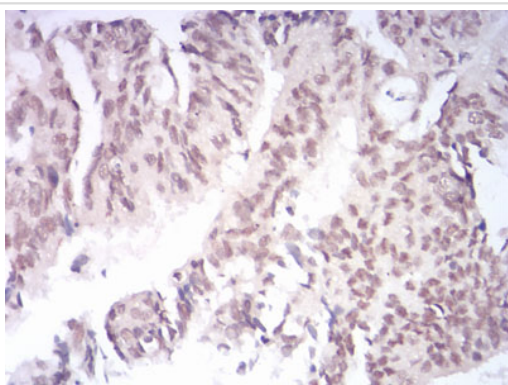
Western blot analysis of AOF1 on human AOF1 recombinant protein using anti-AOF1 antibody at 1/1,000 dilution.



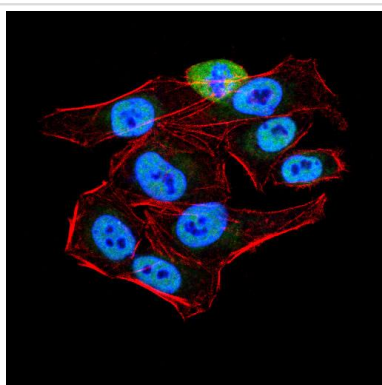
Western blot analysis of AOF1 on HEK293 (1) and AOF1-hlgGfC transfected HEK293 (2) cell lysate using anti-AOF1 antibody at 1/1,000 dilution.



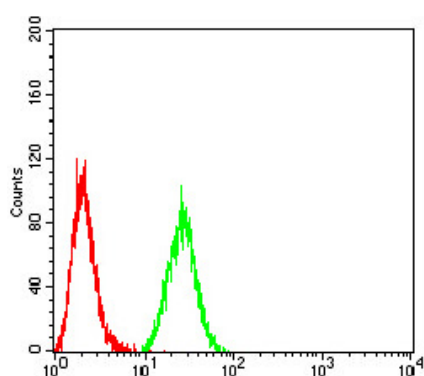
Immunohistochemical analysis of paraffin-embedded human esophageal cancer tissue using anti-AOF1 antibody. Counter stained with hematoxylin.



Immunohistochemical analysis of paraffin-embedded human rectum cancer tissue using anti-AOF1 antibody. Counter stained with hematoxylin.



ICC staining AOF1 (green) and Actin filaments (red) in HeLa cells. The nuclear counter stain is DAPI (blue). Cells were fixed in paraformaldehyde, permeabilised with 0.25% Triton X100/PBS.



Flow cytometric analysis of HeLa cells with AOF1 antibody at 1/100 dilution (green) compared with an unlabelled control (cells without incubation with primary antibody; red).

Background

AOF1 (amine-oxidase flavin-containing domain 1), whose alternative names include KDM1B (lysine (K)-specific demethylase 1B) or LSD2 (lysine-specific histone demethylase 2), is an 823 amino acid nuclear protein belonging to the flavin monoamine oxidase family. As a histone demethylase, AOF1 specifically demethylates Lys4 of histone H3, a marker for epigenetic transcriptional activation, by interacting with a long stretch of the H3 N-terminal tail of mono- and dimethylated Lys4. Existing as three alternatively spliced isoforms, AOF1 is required for de novo DNA methylation of some imprinted genes in oocytes and contains a single SWIRM domain that is implicated in chromatin regulation. AOF1 contains one CW-type zinc finger and is encoded by a gene located on human chromosome 6p22.3.

References

Note: This product is for in vitro research use only