

## SEC31A Antibody

Catalog No: #48427

Package Size: #48427-1 50ul #48427-2 100ul

Orders: order@signalwayantibody.com

Support: tech@signalwayantibody.com

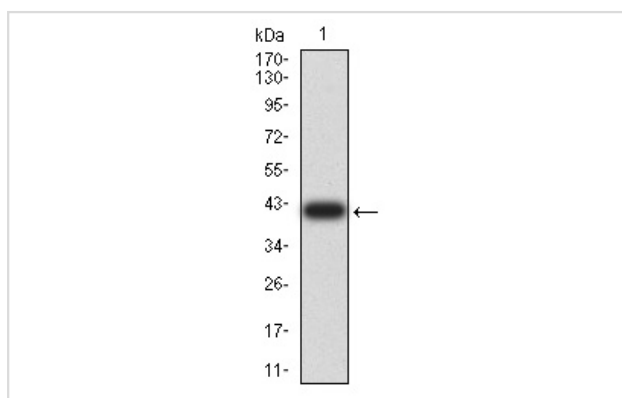
## Description

Product Name	SEC31A Antibody
Host Species	Mouse
Clonality	Monoclonal
Clone No.	C6-D12
Purification	ProA affinity purified
Applications	WB, IHC
Species Reactivity	Hu
Immunogen Description	Recombinant protein
Other Names	1810024J13Rik antibody ABP125 antibody ABP130 antibody AU042160 antibody DKFZp686N07171 antibody HSPC275 antibody HSPC334 antibody KIAA0905 antibody MGC90305 antibody MGC93320 antibody Protein transport protein Sec31A antibody SEC31 homolog A (S. cerevisiae) antibody SEC31 like 1 antibody SEC31 like protein 1 antibody SEC31 related protein A antibody SEC31L1 antibody VAP1 antibody Web1 like protein antibody Yeast Sec31p homolog antibody
Accession No.	Swiss-Prot#:O94979
Uniprot	O94979
GeneID	22872;
Calculated MW	133 kDa
Formulation	1*TBS (pH7.4), 1%BSA, 40%Glycerol. Preservative: 0.05% Sodium Azide.
Storage	Store at -20°C

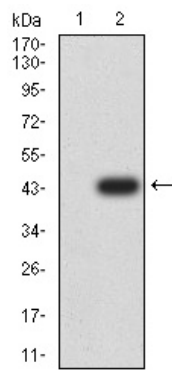
## Application Details

WB: 1:500-1:2,000 IHC: 1:50-1:200

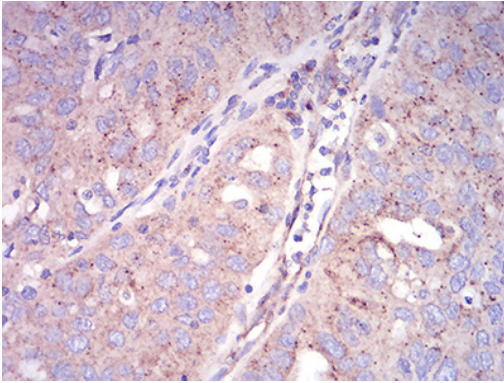
## Images



Western blot analysis of SEC31A on human SEC31A recombinant protein using anti-SEC31A antibody at 1/1,000 dilution.



Western blot analysis of SEC31A on HEK293 (1) and SEC31A-hlgGfC transfected HEK293 (2) cell lysate using anti-SEC31A antibody at 1/1,000 dilution.



Immunohistochemical analysis of paraffin-embedded human ovarian cancer tissue using anti-SEC31A antibody. Counter stained with hematoxylin.

## Background

WD-repeats are motifs that are found in a variety of proteins and are characterized by a conserved core of 40-60 amino acids that commonly form a tertiary propeller structure. While proteins that contain WD-repeats participate in a wide range of cellular functions, they are generally involved in regulatory mechanisms concerning chromatin assembly, cell cycle control, signal transduction, RNA processing, apoptosis and vesicular trafficking. Sec31A, also known as ABP125, ABP130 or SEC31L1, is a 1,220 amino acid protein that contains seven WD repeats and localizes to the cytoplasm and to cytoplasmic vesicles, as well as to the membrane of the endoplasmic reticulum (ER). Expressed ubiquitously at high levels, Sec31A functions as a component of the COP II (coat protein II) complex and, working in tandem with other proteins, promotes the formation of ER transport vesicles and aids in the selection of cargo molecules. Chromosomal aberrations that involve the Sec31A gene are associated with inflammatory myofibroblastic tumors (IMTs), suggesting a role for Sec31A in carcinogenesis. Multiple isoforms of Sec31A exist due to alternative splicing events.

## References

Note: This product is for in vitro research use only