

## AMY1A Antibody

Catalog No: #48431

Package Size: #48431-1 50ul #48431-2 100ul

Orders: order@signalwayantibody.com

Support: tech@signalwayantibody.com

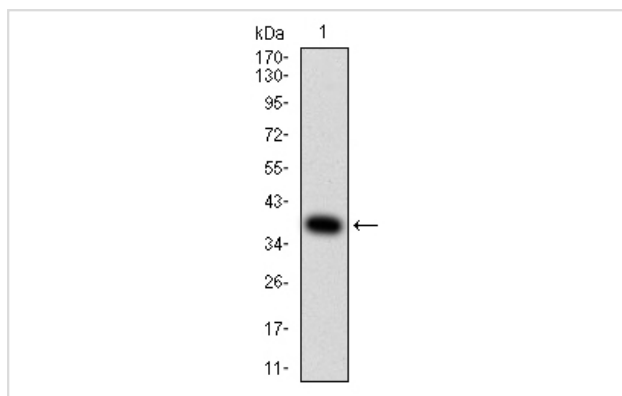
## Description

Product Name	AMY1A Antibody
Host Species	Mouse
Clonality	Monoclonal
Clone No.	F6-G7
Purification	ProA affinity purified
Applications	WB, FC
Species Reactivity	Hu, Rt
Immunogen Description	Recombinant protein
Accession No.	Swiss-Prot#:P04745
Uniprot	P04745
GeneID	276;277;278;
Calculated MW	54 kDa
Formulation	1*TBS (pH7.4), 1%BSA, 40%Glycerol. Preservative: 0.05% Sodium Azide.
Storage	Store at -20°C

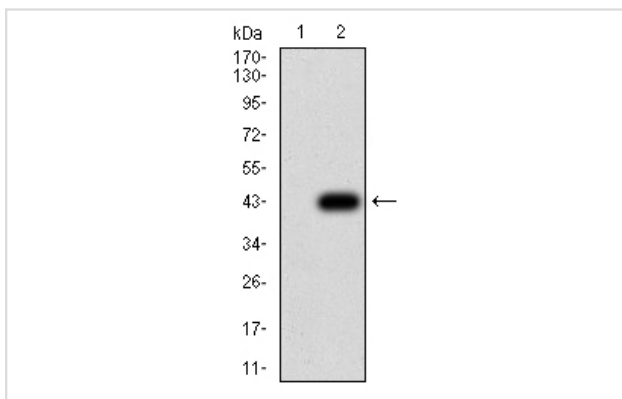
## Application Details

WB: 1:500-1:1,000FC: 1:50-1:100

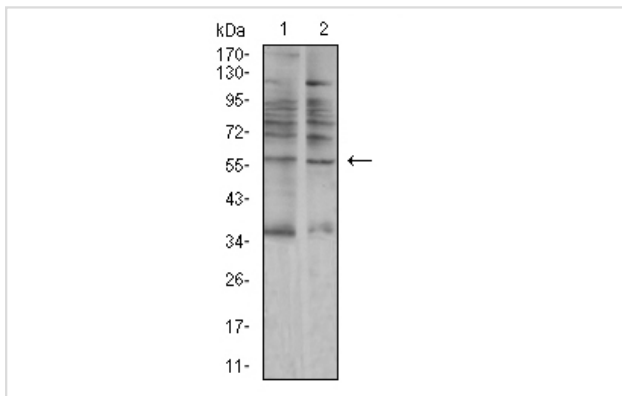
## Images



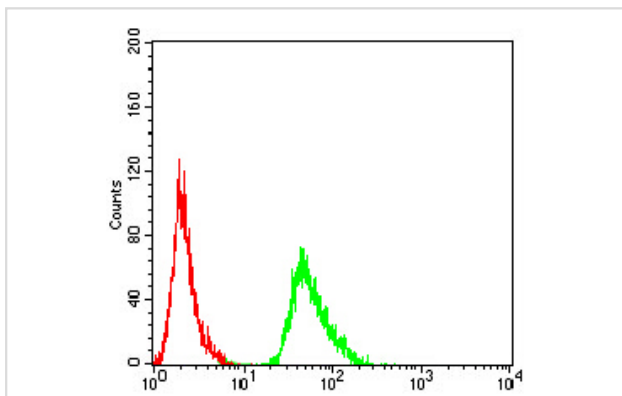
Western blot analysis of AMY1A on human AMY1A recombinant protein using anti-AMY1A antibody at 1/1,000 dilution.



Western blot analysis of AMY1A on HEK293 (1) and AMY1A-hlgFc transfected HEK293 (2) cell lysate using anti-AMY1A antibody at 1/1,000 dilution.



Western blot analysis of AMY1A on A549 and C6 cell lysate using anti-AMY1A antibody at 1/1,000 dilution.



Flow cytometric analysis of MCF-7 cells with AMY1A antibody at 1/100 dilution (green) compared with an unlabelled control (cells without incubation with primary antibody; red).

## Background

Amylases are secreted proteins that hydrolyze 1,4-alpha-glucoside bonds in oligosaccharides and polysaccharides, and thus catalyze the first step in digestion of dietary starch and glycogen. The human genome has a cluster of several amylase genes that are expressed at high levels in either salivary gland or pancreas. This gene encodes an amylase isoenzyme produced by the salivary gland. Alternative splicing results in multiple transcript variants encoding the same protein.

## References

Note: This product is for in vitro research use only