

SOD-1 Polyclonal Antibody

Catalog No: #41452

Package Size: #41452-1 50ul #41452-2 100ul

Orders: order@signalwayantibody.comSupport: tech@signalwayantibody.com

Description

Product Name	SOD-1 Polyclonal Antibody
Host Species	Rabbit
Clonality	Polyclonal
Purification	The antibody was affinity-purified from rabbit antiserum by affinity-chromatography using epitope-specific immunogen.
Applications	WB ELISA
Species Reactivity	Hu Ms Rt
Specificity	SOD-1 Polyclonal Antibody detects endogenous levels of SOD-1 protein.
Immunogen Type	peptide
Immunogen Description	Synthesized peptide derived from the Internal region of human SOD-1.
Target Name	SOD-1
Other Names	SOD1; Superoxide dismutase [Cu-Zn]; Superoxide dismutase 1; hSod1
Accession No.	Swiss-Prot: P00441NCBI Gene ID: 6647
Uniprot	P00441
GeneID	6647;
SDS-PAGE MW	18kd
Concentration	1mg/ml
Formulation	Liquid in PBS containing 50% glycerol, 0.5% BSA and 0.02% sodium azide.
Storage	Store at -20°C/1 year

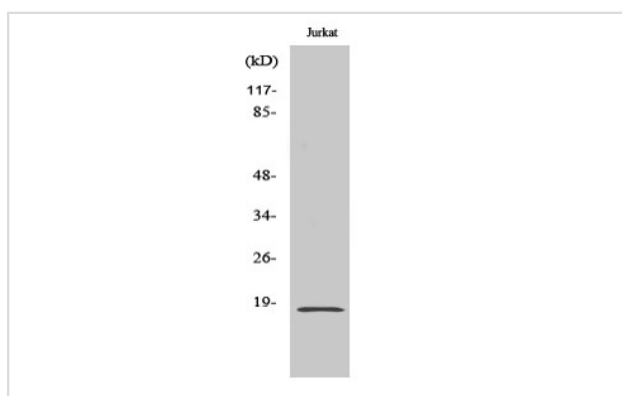
Application Details

Western Blot: 1/500 - 1/2000.

ELISA: 1/10000.

Not yet tested in other applications.

Images



Western Blot analysis of K562 cells using SOD-1 Polyclonal Antibody

Note: This product is for in vitro research use only