

RSK2 Antibody

Catalog No: #48459



Package Size: #48459-1 50ul #48459-2 100ul

Orders: order@signalwayantibody.com

Support: tech@signalwayantibody.com

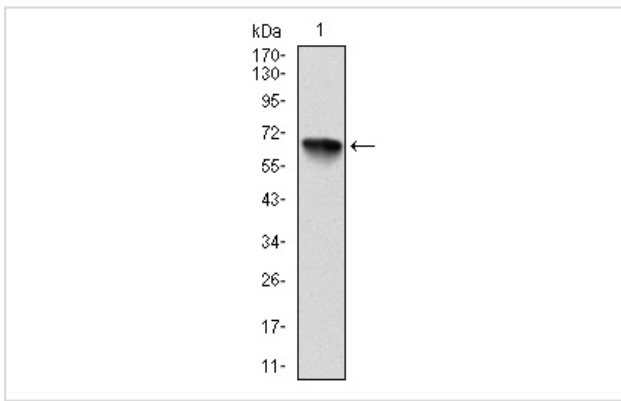
Description

Product Name	RSK2 Antibody
Host Species	Mouse
Clonality	Monoclonal
Clone No.	D2-E10
Purification	ProA affinity purified
Applications	WB, ICC, FC
Species Reactivity	Hu
Immunogen Description	Recombinant protein
Other Names	90 kDa ribosomal protein S6 kinase 3 antibody CLS antibody HU 3 antibody HU2 antibody HU3 antibody Insulin stimulated protein kinase 1 antibody Insulin-stimulated protein kinase 1 antibody ISPK-1 antibody ISPK1 antibody KS6A3_HUMAN antibody MAP kinase activated protein kinase 1b antibody MAP kinase-activated protein kinase 1b antibody MAPK activated protein kinase 1b antibody MAPK-activated protein kinase 1b antibody MAPKAP kinase 1b antibody MAPKAPK 1b antibody MAPKAPK-1b antibody MAPKAPK1B antibody Mental retardation, X linked 19 antibody MRX19 antibody OTTHUMP00000023036 antibody p90 RSK2 antibody p90 RSK3 antibody p90-RSK 3 antibody p90RSK3 antibody pp90RSK2 antibody Ribosomal protein S6 kinase 90kDa polypeptide 3 antibody Ribosomal protein S6 kinase alpha 3 antibody Ribosomal protein S6 kinase alpha-3 antibody Ribosomal protein s6 kinase ii alpha 2 antibody Ribosomal S6 kinase 2 antibody Rps6ka3 antibody RSK antibody RSK-2 antibody RSK2 antibody S6 kinase 2 antibody S6K alpha3 antibody S6K-alpha-3 antibody
Accession No.	Swiss-Prot#:P51812
Uniprot	P51812
GeneID	6197;
Calculated MW	84 kDa
Formulation	1*TBS (pH7.4), 1%BSA, Preservative: 0.05% Sodium Azide.
Storage	Store at -20°C

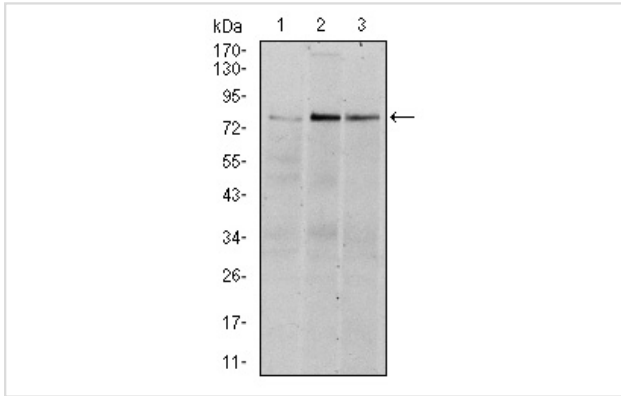
Application Details

WB: 1:500-1:1000 ICC: 1:50-1:200 FC: 1:100-1:200

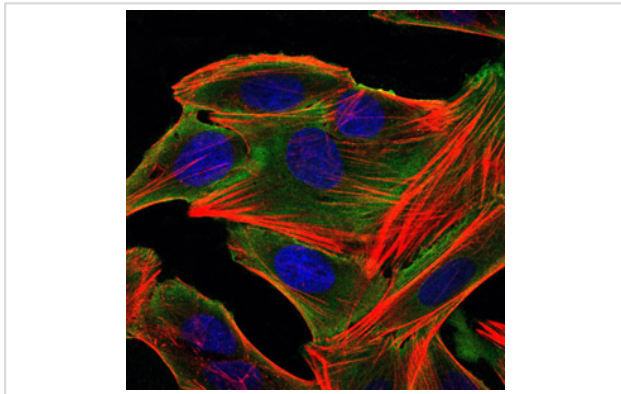
Images



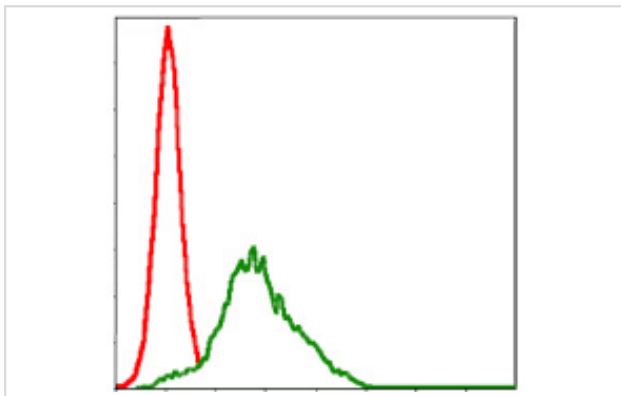
Western blot analysis of RSK2 on human RSK2 recombinant protein using anti-RSK2 antibody at 1/1,000 dilution.



Western blot analysis of RSK2 on different cell lysates using anti-RSK2 antibody at 1/1,000 dilution. Positive control: Lane 1: Hela Lane 2: MCF-7 Lane 3: HepG2



ICC staining RSK2 (green) and actin filaments (red) in HepG2 cells. The nuclear counter stain is DAPI (blue). Cells were fixed in paraformaldehyde, permeabilised with 0.25% Triton X100/PBS.



Flow cytometric analysis of HepG2 cells with RSK2 antibody at 1/100 dilution (green) compared with an unlabelled control (cells without incubation with primary antibody; red).

Background

The family of ribosomal S6 kinases (Rsk), designated Rsk-1 (or MAPKAP kinase-1), Rsk-2 and Rsk-3, are intracellular serine/threonine kinases that are important signaling intermediates in response to a broad range of ligand activated receptor tyrosine kinases. A unique feature common to the members of the Rsk family is that each possesses two non-identical complete kinase catalytic domains. An additional Rsk protein, Rsk-4, shows a high level of homology to the three previously isolated members of the human Rsk family. Rsk-4 is most abundantly expressed in brain and kidney and plays a role in normal neuronal development. The family of ribosomal S6 kinases includes p70 S6 kinase and p90 S6 kinase b, which are thought to have similar regulatory functions. MSK1 (also designated RLPK) is a novel Rsk-related protein, which, like the p90 Rsk family members, contains two non-identical complete kinase catalytic domains.

References

Note: This product is for in vitro research use only