

LPlunc1 Antibody

Catalog No: #48460

Package Size: #48460-1 50ul #48460-2 100ul

Orders: order@signalwayantibody.com

Support: tech@signalwayantibody.com

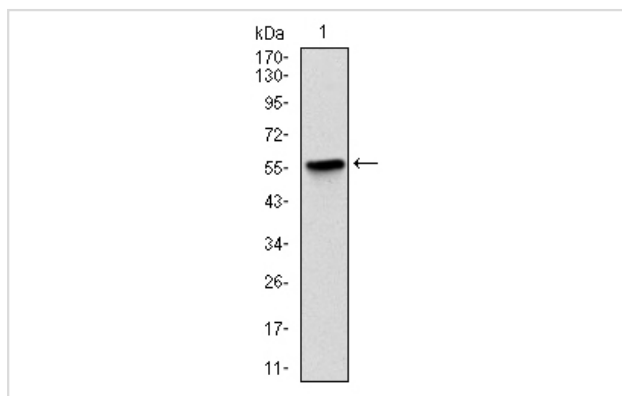
Description

Product Name	LPlunc1 Antibody
Host Species	Mouse
Clonality	Monoclonal
Clone No.	C1-A5
Purification	ProA affinity purified
Applications	WB, ICC, IHC, FC
Species Reactivity	Hu
Immunogen Description	Recombinant protein
Other Names	BPI fold containing family B, member 1 antibody C20orf114 antibody Long palate antibody Long palate, lung and nasal epithelium carcinoma associated 1 antibody Long palate, lung and nasal epithelium carcinoma associated protein 1 antibody LPLC1_HUMAN antibody Lplunc1 antibody lung and nasal epithelium carcinoma-associated protein 1 antibody VEMSGP antibody Von Ebner minor salivary gland protein antibody
Accession No.	Swiss-Prot#:Q8TDL5
Uniprot	Q8TDL5
GeneID	92747;
Calculated MW	52 kDa
Formulation	1*TBS (pH7.4), 1%BSA, Preservative: 0.05% Sodium Azide.
Storage	Store at -20°C

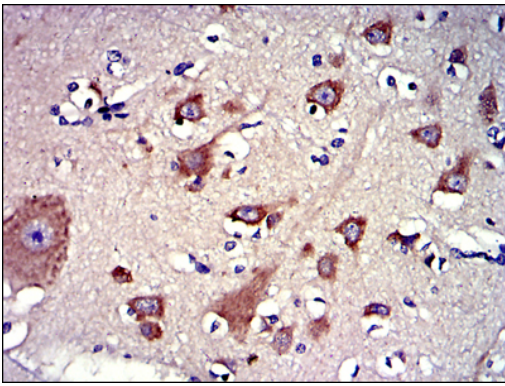
Application Details

WB: 1:500-1:1000 IHC: 1:50-1:200 ICC: 1:50-1:200 FC: 1:100-1:200

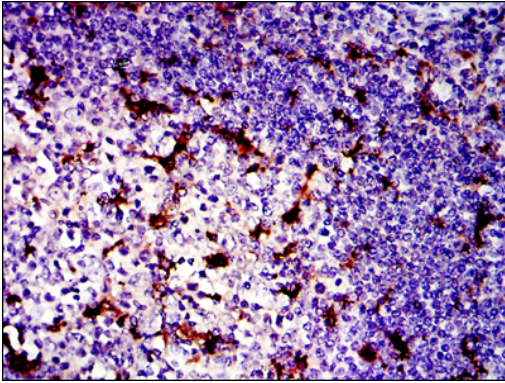
Images



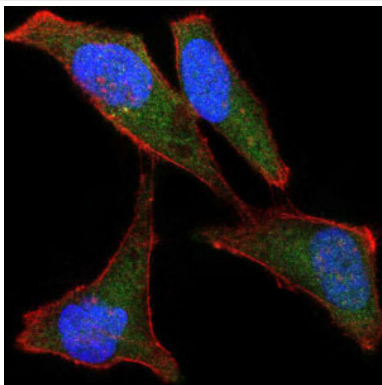
Western blot analysis of LPlunc1 on human LPlunc1 recombinant protein using anti-LPlunc1 antibody at 1/1,000 dilution.



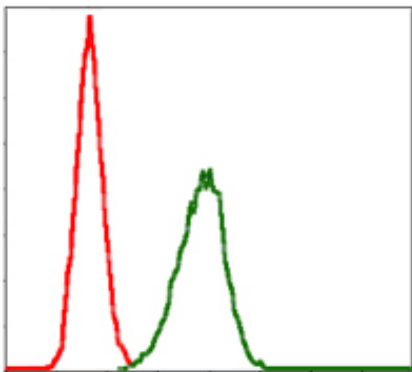
Immunohistochemical analysis of paraffin-embedded brain tissue using anti-LPlunc1 antibody. Counter stained with hematoxylin.



Immunohistochemical analysis of paraffin-embedded tonsil tissue using anti-LPlunc1 antibody. Counter stained with hematoxylin.



ICC staining LPlunc1 (green) and actin filaments (red) in HeLa cells. The nuclear counter stain is DAPI (blue). Cells were fixed in paraformaldehyde, permeabilised with 0.25% Triton X100/PBS.



Flow cytometric analysis of HeLa cells with LPlunc1 antibody at 1/100 dilution (green) compared with an unlabelled control (cells without incubation with primary antibody; red).

Background

The protein LPlunc1 encoded by this gene may be involved in the innate immune response to bacterial exposure in the mouth, nasal cavities, and lungs. The encoded protein is secreted and is a member of the BPI/LBP/PLUNC protein superfamily. This gene is found with other members of the superfamily in a cluster on chromosome 20.?

References

Note: This product is for in vitro research use only