

SphK2 Polyclonal Antibody

Catalog No: #41454

Package Size: #41454-1 50ul #41454-2 100ul

Orders: order@signalwayantibody.com

Support: tech@signalwayantibody.com

Description

Product Name	SphK2 Polyclonal Antibody
Host Species	Rabbit
Clonality	Polyclonal
Purification	The antibody was affinity-purified from rabbit antiserum by affinity-chromatography using epitope-specific immunogen.
Applications	WB IHC ELISA
Species Reactivity	Hu Ms Rt
Specificity	SphK2 Polyclonal Antibody detects endogenous levels of SphK2 protein.
Immunogen Type	peptide
Immunogen Description	Synthesized peptide derived from human SphK2 around the non-phosphorylation site of T614.
Target Name	SphK2
Other Names	SPHK2; Sphingosine kinase 2; SK 2; SPK 2
Accession No.	Swiss-Prot: Q9NRA0NCBI Gene ID: 56848
Uniprot	Q9NRA0
GeneID	56848;
SDS-PAGE MW	70kDa
Concentration	1mg/ml
Formulation	Liquid in PBS containing 50% glycerol, 0.5% BSA and 0.02% sodium azide.
Storage	Store at -20°C/1 year

Application Details

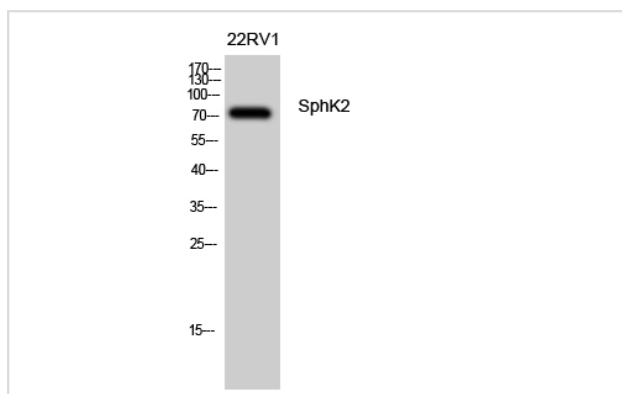
Western Blot: 1/500 - 1/2000.

Immunohistochemistry: 1/100 - 1/300.

ELISA: 1/5000.

Not yet tested in other applications.

Images



Western Blot analysis of 22RV1 cells using SphK2 Polyclonal Antibody

Note: This product is for in vitro research use only