

KID Antibody

Catalog No: #48467

Package Size: #48467-1 50ul #48467-2 100ul

Orders: order@signalwayantibody.com

Support: tech@signalwayantibody.com

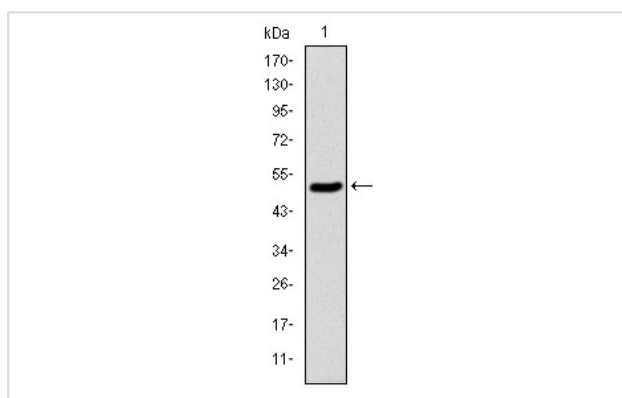
Description

Product Name	KID Antibody
Host Species	Mouse
Clonality	Monoclonal
Clone No.	D1-E3
Purification	ProA affinity purified
Applications	WB,IHC,FC
Species Reactivity	Hu
Immunogen Description	Recombinant protein
Other Names	connexin 26 antibody Connexin-26 antibody Cx26 antibody CXB2_HUMAN antibody DFNA3 antibody DFNB1 antibody Gap junction beta-2 protein antibody GJB2 antibody HID antibody KID antibody NSRD1 antibody PPK antibody
Accession No.	Swiss-Prot#:Q14807
Uniprot	Q14807
GeneID	3835;
Calculated MW	73 kDa
Formulation	1*TBS (pH7.4), 1%BSA, Preservative: 0.05% Sodium Azide.
Storage	Store at -20°C

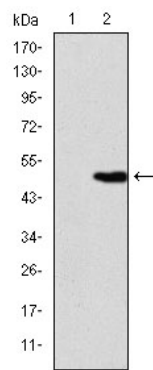
Application Details

WB: 1:500-1:1,000 IHC: 1:100-1:500 FC: 1:100-1:200

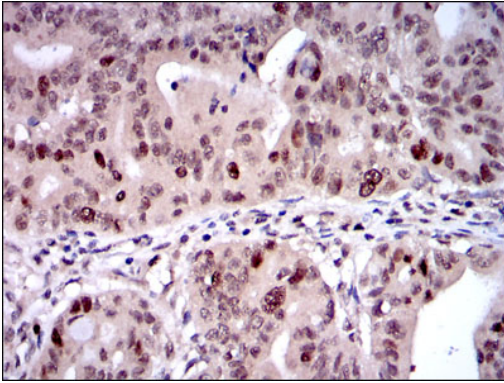
Images



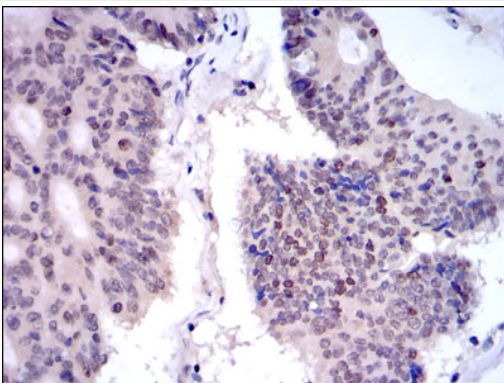
Western blot analysis of KIF22 on human KIF22 recombinant protein using anti- KIF22 antibody at 1/1,000 dilution.



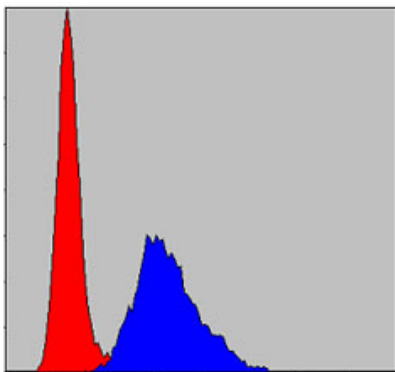
Western blot analysis of KIF22 on HEK293 (1) and KIF22-hlgGfc transfected HEK293 (2) cell lysate using anti-KIF22 antibody at 1/1,000 dilution.



Immunohistochemical analysis of paraffin-embedded human rectum cancer tissue using anti-KIF22 antibody. Counter stained with hematoxylin.



Immunohistochemical analysis of paraffin-embedded human colon cancer tissue using anti-KIF22 antibody. Counter stained with hematoxylin.



Flow cytometric analysis of NIH/3T3 cells with KIF22 antibody at 1/100 dilution (blue) compared with an unlabelled control (cells without incubation with primary antibody; red).

References

Note: This product is for in vitro research use only