

PSIP1 Antibody

Catalog No: #48469

Package Size: #48469-1 50ul #48469-2 100ul

Orders: order@signalwayantibody.com

Support: tech@signalwayantibody.com

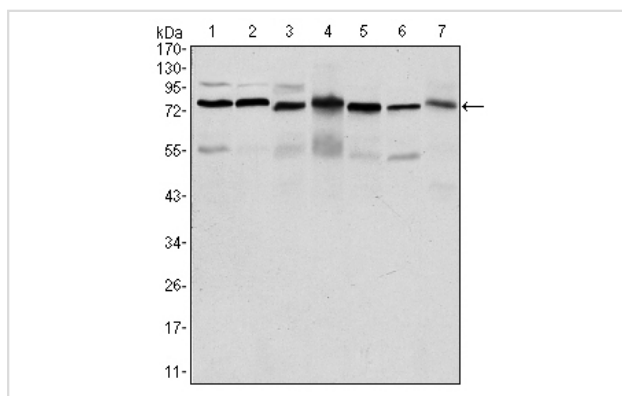
Description

Product Name	PSIP1 Antibody
Host Species	Mouse
Clonality	Monoclonal
Clone No.	B11-E4
Purification	ProA affinity purified
Applications	WB,ICC,IHC
Species Reactivity	Hu, Monkey, Rt
Immunogen Description	Recombinant protein
Other Names	CLL associated antigen KW 7 antibody CLL-associated antigen KW-7 antibody Dense fine speckles 70 kDa protein antibody DFS 70 antibody DFS70 antibody LEDGF antibody Lens epithelium derived growth factor antibody Lens epithelium-derived growth factor antibody MGC74712 antibody p52 antibody p75 antibody PAIP antibody PC4 and SFRS1 interacting protein 1 antibody PC4 and SFRS1 interacting protein 2 antibody PC4 and SFRS1 interacting protein antibody PC4 and SFRS1-interacting protein antibody PSIP 1 antibody PSIP 2 antibody Psp1 antibody PSIP1_HUMAN antibody PSIP2 antibody Transcriptional coactivator p75/p52 antibody
Accession No.	Swiss-Prot#:O75475
Uniprot	O75475
GeneID	11168;
Calculated MW	75 kDa
Formulation	1*TBS (pH7.4), 1%BSA, Preservative: 0.05% Sodium Azide.
Storage	Store at -20°C

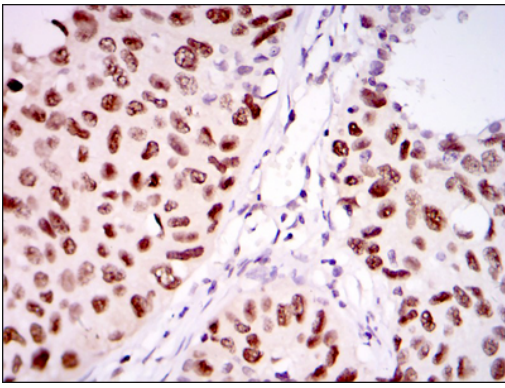
Application Details

WB: 1:500-1:1,000IHC: 1:100-1:500ICC: 1:100-1:500

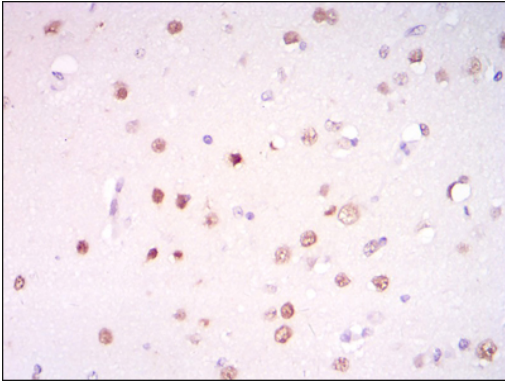
Images



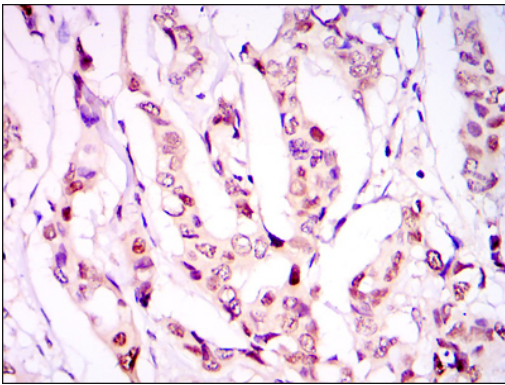
Western blot analysis of PSIP1 on different cell lysates using anti-PSIP1 antibody at 1/1,000 dilution. Positive control: Lane 1: HepG2 Lane 2: Jurkat Lane 3: K562 Lane 4: Cos7 Lane 5: PC-12 Lane 6: HeLa Lane 7: NIH/3T3



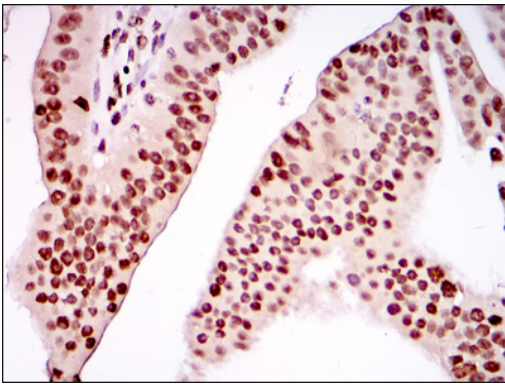
Immunohistochemical analysis of paraffin-embedded human lung cancer tissue using anti-PSIP1 antibody. Counter stained with hematoxylin.



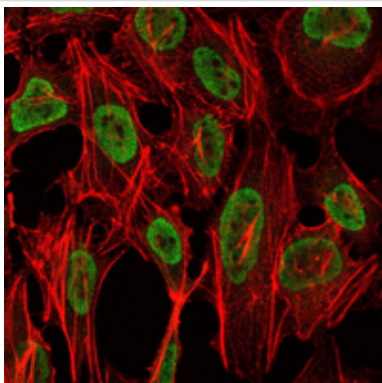
Immunohistochemical analysis of paraffin-embedded brain tissue using anti-PSIP1 antibody. Counter stained with hematoxylin.



Immunohistochemical analysis of paraffin-embedded human breast cancer tissue using anti-PSIP1 antibody. Counter stained with hematoxylin.



Immunohistochemical analysis of paraffin-embedded human ovarian cancer tissue using anti-PSIP1 antibody. Counter stained with hematoxylin.



ICC staining PSIP1 (green) and actin filaments (red) in NIH/3T3 cells. Cells were fixed in paraformaldehyde, permeabilised with 0.25% Triton X100/PBS.

Background

PSIP1 (PC4 and SFRS1 interacting protein 1), also known as CLL-associated antigen KW-7, PSIP2, LEDGF (lens epithelium-derived growth factor), PAIP, DFS70 (dense fine speckles 70 kDa protein) or transcriptional coactivator p75/p52, is a 530 amino acid nuclear protein that associates with chromatin throughout the cell cycle. Functioning as a transcriptional coactivator that complexes with the human immunodeficiency virus type 1 (HIV-1) integrase, PSIP1 is essential for the nuclear localization and chromosomal association of viral proteins. As the primary integrase-to-chromatin tethering factor for HIV-1, PSIP1 is responsible for the cellular trafficking of lentiviral integrases. During apoptosis, PSIP1 is cleaved at three sites by caspase-3 and caspase-7, contributing to the pathogenesis of atopic disorders.

References

Note: This product is for in vitro research use only