

SCGB2A2 Antibody

Catalog No: #48472

Package Size: #48472-1 50ul #48472-2 100ul

Orders: order@signalwayantibody.com

Support: tech@signalwayantibody.com

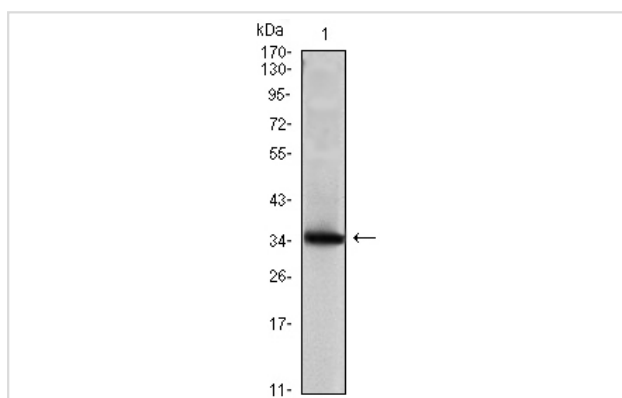
Description

Product Name	SCGB2A2 Antibody
Host Species	Mouse
Clonality	Monoclonal
Clone No.	E2-C80
Purification	ProA affinity purified
Applications	WB,ICC,IHC,FC
Species Reactivity	Hu
Immunogen Description	Recombinant protein
Other Names	Mammaglobin 1 antibody Mammaglobin-1 antibody Mammaglobin-A antibody MGB1 antibody Scgb2a2 antibody Secretoglobin family 2A member 2 antibody SG2A2 antibody SG2A2_HUMAN antibody UGB2 antibody
Accession No.	Swiss-Prot#:Q13296
Uniprot	Q13296
GeneID	4250;
Calculated MW	11 kDa
Formulation	1*TBS (pH7.4), 1%BSA, Preservative: 0.05% Sodium Azide.
Storage	Store at -20°C

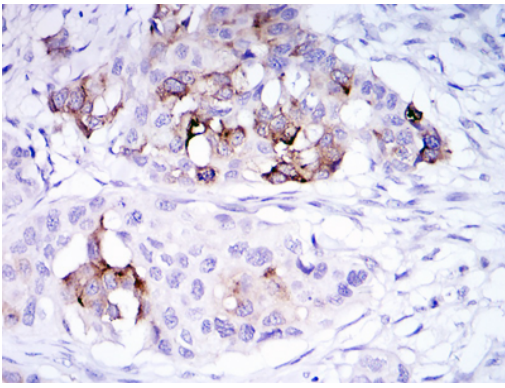
Application Details

WB: 1:500-1:1,000IHC: 1:50-1:200ICC: 1:50-1:200FC: 1:100-1:200

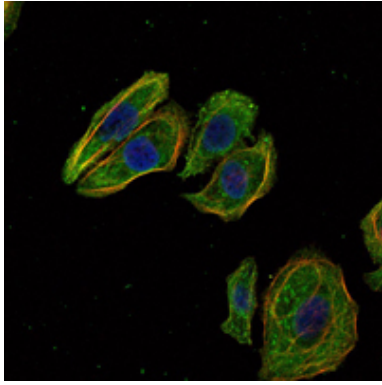
Images



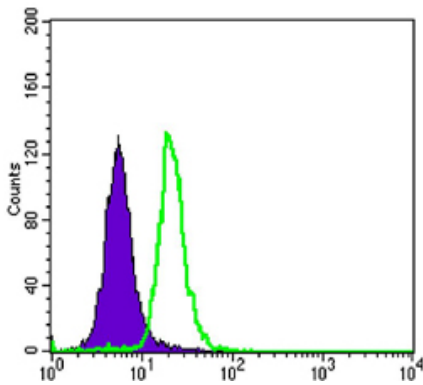
Western blot analysis of Mammaglobin A on human Mammaglobin A recombinant protein using anti-Mammaglobin A antibody at 1/1,000 dilution.



Immunohistochemical analysis of paraffin-embedded human mammary cancer tissue using anti- Mammaglobin A antibody. Counter stained with hematoxylin.



ICC staining Mammaglobin A (green) and actin filaments (red) in HeLa cells. The nuclear counter stain is DAPI (blue). Cells were fixed in paraformaldehyde, permeabilised with 0.25% Triton X100/PBS.



Flow cytometric analysis of SK-BR-3 cells with Mammaglobin A antibody at 1/100 dilution (green) compared with an unlabelled control (cells without incubation with primary antibody; purple).

Background

Secretoglobins (also called lipophilins or mammaglobins) are small secreted proteins of endocrine-responsive organs and mucosal epithelia that form multimeric complexes and correlate with the development of various human cancers. Lipophilin A and Lipophilin B are orthologs of prostectin (estramustine-binding protein), the major secretory glycoprotein of the rat ventral prostate gland. Lipophilin A, also designated LIPA, LPHA and secretoglobin, family 1D, member 1 (SCGB1D1), is a component of a heterodimeric molecule present in human tears. Lipophilin B, also designated LIPB, LPHB and secretoglobin, family 1D, member 2 (SCGB1D2), mRNA can be overexpressed in breast tumors and shows a high degree of correlation with the mRNA expression profile of mammaglobin. Histological detection in breast tissue of Mammaglobin A, also designated MGB1 and secretoglobin, family 2A, member 2 (SCGB2A2) and Mammaglobin B (also designated MGB2, lipophilin C, LPHC, UGB3 and SCGB2A2) is a reliable diagnostic marker for breast tumors.

References

Note: This product is for in vitro research use only