

C-CBL Antibody

Catalog No: #48473

Package Size: #48473-1 50ul #48473-2 100ul

Orders: order@signalwayantibody.com

Support: tech@signalwayantibody.com

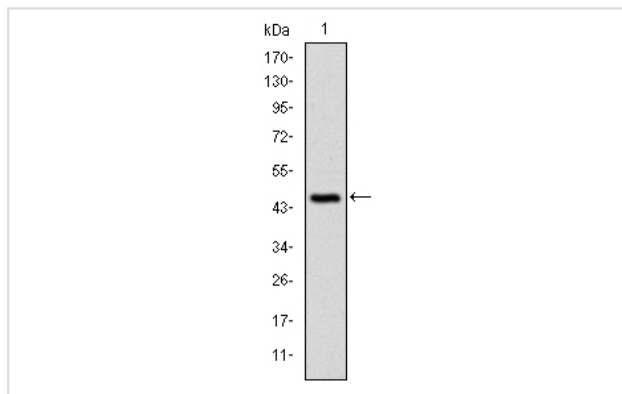
Description

Product Name	C-CBL Antibody
Host Species	Mouse
Clonality	Monoclonal
Clone No.	C1-B12
Purification	ProA affinity purified
Applications	WB,ICC,IHC,FC
Species Reactivity	Hu, Ms, Rt
Immunogen Description	Recombinant protein
Other Names	4732447J05Rik antibody C CBL antibody Cas Br M (murine) ecotropic retroviral transforming sequence antibody Casitas B lineage lymphoma proto oncogene antibody Casitas B-lineage lymphoma proto-oncogene antibody CBL 2 antibody cbl antibody CBL_HUMAN antibody CBL2 antibody E3 ubiquitin protein ligase CBL antibody E3 ubiquitin-protein ligase CBL antibody Oncogene CBL2 antibody Proto oncogene c CBL antibody Proto-oncogene c-CBL antibody RGD1561386 antibody RING finger protein 55 antibody RNF55 antibody Signal transduction protein CBL antibody
Accession No.	Swiss-Prot#:P22681
Uniprot	P22681
GeneID	867;
Calculated MW	120 kDa
Formulation	1*TBS (pH7.4), 1%BSA, Preservative: 0.05% Sodium Azide.
Storage	Store at -20°C

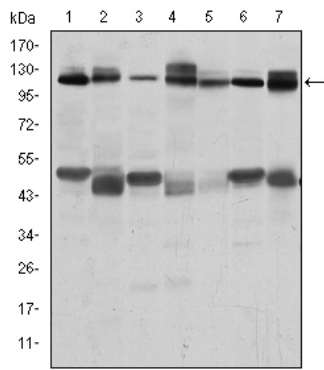
Application Details

WB: 1:500-1:1,000 IHC: 1:50-1:200 ICC: 1:100-1:500FC: 1:100-1:200

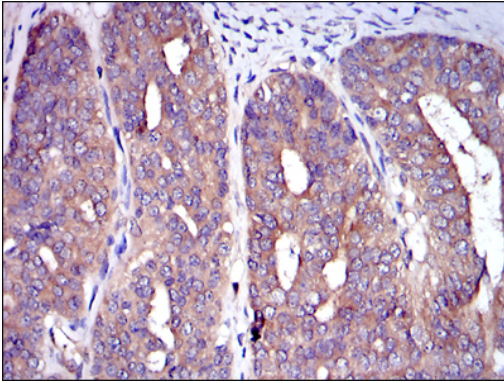
Images



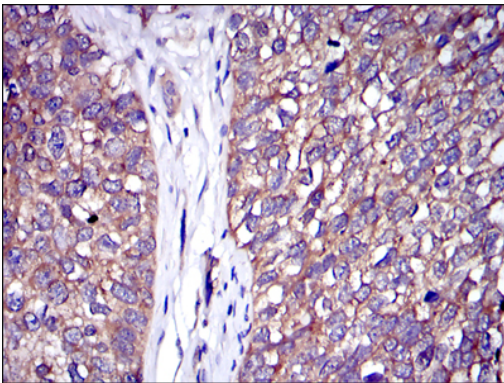
Western blot analysis of CBL on human CBL recombinant protein using anti-CBL antibody at 1/1,000 dilution.



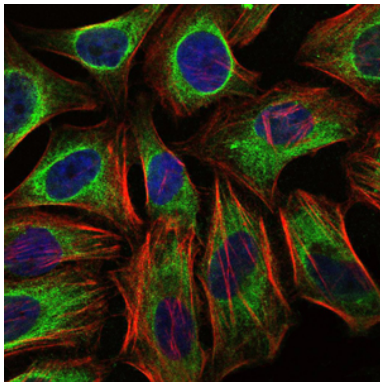
Western blot analysis of CBL on different cell lysates using anti-CBL antibody at 1/1,000 dilution. Positive control: Lane 1: RAJI Lane 2: RAW264.7 Lane 3: K562 Lane 4: SKBR-3 Lane 5: 3T3-L1 Lane 6: THP-1 Lane 7: PC-12



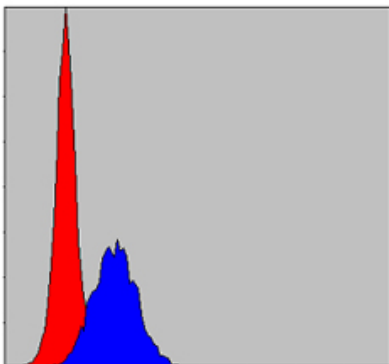
Immunohistochemical analysis of paraffin-embedded ovarian cancer tissue using anti-CBL antibody. Counter stained with hematoxylin.



Immunohistochemical analysis of paraffin-embedded bladder cancer tissue using anti-CBL antibody. Counter stained with hematoxylin.



ICC staining CBL (green) and actin filaments (red) in HeLa cells. The nuclear counter stain is DAPI (blue). Cells were fixed in paraformaldehyde, permeabilised with 0.25% Triton X100/PBS.



Flow cytometric analysis of MCF-7 cells with CBL antibody at 1/100 dilution (blue) compared with an unlabelled control (cells without incubation with primary antibody; red).

References

Note: This product is for in vitro research use only